

---

LumCAT: 85504LACO	
Luminaire: 85504LACO	
Report No:	Voltage(V): 120.0200
Test No:	Current(A): 0.2590
LampCAT:	Power (W): 19.0380
Lamp flux(lm): -1.0	PF: 0.6124
Number of Lamps: 1	Ballast type:
Length(mm): 0	Width(mm): 0
Phm Type: C	Height(mm): 0

---

#### Photometric Results

Lumens(lm): 788.81  
Efficiency(%): 0.00%  
Lumens(lm)/Power(W): 41.43  
Central intensity(cd): 128.619  
Maximum intensity(cd): 152.356  
Angle of maximum intensity: C=10.0  $\gamma$ =13.0  
Beam Angle(50%Imax): [C0/180]Total=181.6  
[C90/270]Total=200.3  
Field angle(10%Imax): [C0/180]Total=229.8  
[C90/270]Total=265.9  
Maximum s/h(1/2): C0\_180=0.94 C90\_270=0.94  
Maximum s/h(1/4): C0\_180=1.42 C90\_270=1.46  
Up flux rate of lamp(%): 0.00%  
Down flux rate of lamp(%): 0.00%  
Up flux rate of LUM(%): 26.26%  
Down flux rate of LUM(%): 73.74%  
CIE Type : Semidirect lighting  
Output flux ratio in  $\pi$  solid angle : 37.750%

$\gamma(^{\circ})$	Average I(cd)	Zonal F(lm)	Sum F(lm)	Eff Flux(%)	Eff Sum(%)	Sum/Lum(%)
0.0	128.504	.000	.000	.000%	.000%	.000%
1.0	128.544	.123	.123	.000%	.000%	.016%
2.0	128.844	.369	.492	.000%	.000%	.062%
3.0	129.452	.618	1.110	.000%	.000%	.141%
4.0	130.191	.869	1.979	.000%	.000%	.251%
5.0	131.107	1.124	3.103	.000%	.000%	.393%
6.0	132.331	1.384	4.488	.000%	.000%	.569%
7.0	133.598	1.651	6.138	.000%	.000%	.778%
8.0	135.070	1.923	8.061	.000%	.000%	1.022%
9.0	136.085	2.198	10.259	.000%	.000%	1.301%
10.0	136.503	2.467	12.726	.000%	.000%	1.613%
11.0	136.506	2.728	15.454	.000%	.000%	1.959%
12.0	135.772	2.976	18.430	.000%	.000%	2.336%
13.0	134.789	3.211	21.641	.000%	.000%	2.743%
14.0	133.643	3.436	25.077	.000%	.000%	3.179%
15.0	131.741	3.643	28.720	.000%	.000%	3.641%
16.0	129.588	3.829	32.549	.000%	.000%	4.126%
17.0	126.762	3.992	36.541	.000%	.000%	4.632%
18.0	123.732	4.130	40.671	.000%	.000%	5.156%
19.0	120.351	4.247	44.918	.000%	.000%	5.694%
20.0	116.977	4.344	49.262	.000%	.000%	6.245%
21.0	113.634	4.428	53.690	.000%	.000%	6.806%
22.0	110.401	4.502	58.192	.000%	.000%	7.377%
23.0	107.182	4.565	62.757	.000%	.000%	7.956%
24.0	103.875	4.614	67.372	.000%	.000%	8.541%
25.0	100.733	4.652	72.024	.000%	.000%	9.131%
26.0	96.862	4.664	76.689	.000%	.000%	9.722%
27.0	92.914	4.643	81.331	.000%	.000%	10.311%
28.0	89.004	4.606	85.937	.000%	.000%	10.895%
29.0	84.823	4.548	90.485	.000%	.000%	11.471%
30.0	81.293	4.485	94.970	.000%	.000%	12.040%
31.0	78.171	4.438	99.408	.000%	.000%	12.602%
32.0	75.695	4.408	103.816	.000%	.000%	13.161%
33.0	74.193	4.416	108.232	.000%	.000%	13.721%
34.0	73.013	4.455	112.687	.000%	.000%	14.286%
35.0	72.566	4.521	117.208	.000%	.000%	14.859%
36.0	72.732	4.626	121.834	.000%	.000%	15.445%
37.0	73.514	4.770	126.604	.000%	.000%	16.050%

$\gamma(^{\circ})$	Average I(cd)	Zonal F(lm)	Sum F(lm)	Eff Flux(%)	Eff Sum(%)	Sum/Lum(%)
38.0	74.899	4.954	131.558	.000%	.000%	16.678%
39.0	76.553	5.169	136.727	.000%	.000%	17.333%
40.0	78.598	5.411	142.138	.000%	.000%	18.019%
41.0	80.497	5.665	147.803	.000%	.000%	18.737%
42.0	82.320	5.915	153.719	.000%	.000%	19.487%
43.0	84.333	6.173	159.892	.000%	.000%	20.270%
44.0	86.100	6.433	166.325	.000%	.000%	21.085%
45.0	87.727	6.680	173.005	.000%	.000%	21.932%
46.0	89.287	6.923	179.928	.000%	.000%	22.810%
47.0	90.791	7.162	187.090	.000%	.000%	23.718%
48.0	92.124	7.394	194.484	.000%	.000%	24.655%
49.0	93.351	7.617	202.101	.000%	.000%	25.621%
50.0	94.496	7.832	209.933	.000%	.000%	26.614%
51.0	95.498	8.038	217.971	.000%	.000%	27.633%
52.0	96.382	8.234	226.205	.000%	.000%	28.677%
53.0	97.156	8.419	234.624	.000%	.000%	29.744%
54.0	97.806	8.593	243.217	.000%	.000%	30.833%
55.0	98.267	8.752	251.969	.000%	.000%	31.943%
56.0	98.745	8.902	260.872	.000%	.000%	33.071%
57.0	99.068	9.044	269.916	.000%	.000%	34.218%
58.0	99.295	9.173	279.089	.000%	.000%	35.381%
59.0	99.456	9.292	288.381	.000%	.000%	36.559%
60.0	99.495	9.399	297.780	.000%	.000%	37.750%
61.0	99.444	9.494	307.274	.000%	.000%	38.954%
62.0	99.318	9.578	316.851	.000%	.000%	40.168%
63.0	99.114	9.651	326.502	.000%	.000%	41.392%
64.0	98.835	9.713	336.216	.000%	.000%	42.623%
65.0	98.462	9.764	345.980	.000%	.000%	43.861%
66.0	98.065	9.805	355.785	.000%	.000%	45.104%
67.0	97.588	9.838	365.623	.000%	.000%	46.351%
68.0	96.986	9.856	375.479	.000%	.000%	47.601%
69.0	96.425	9.867	385.346	.000%	.000%	48.851%
70.0	95.811	9.873	395.219	.000%	.000%	50.103%
71.0	95.077	9.866	405.085	.000%	.000%	51.354%
72.0	94.378	9.851	414.936	.000%	.000%	52.603%
73.0	93.635	9.832	424.768	.000%	.000%	53.849%
74.0	92.778	9.800	434.568	.000%	.000%	55.091%
75.0	91.981	9.762	444.330	.000%	.000%	56.329%

$\gamma(^{\circ})$	Average I(cd)	Zonal F(lm)	Sum F(lm)	Eff Flux(%)	Eff Sum(%)	Sum/Lum(%)
76.0	91.113	9.719	454.050	.000%	.000%	57.561%
77.0	90.195	9.667	463.716	.000%	.000%	58.787%
78.0	89.309	9.609	473.325	.000%	.000%	60.005%
79.0	88.350	9.546	482.871	.000%	.000%	61.215%
80.0	87.351	9.472	492.343	.000%	.000%	62.416%
81.0	86.376	9.395	501.738	.000%	.000%	63.607%
82.0	85.352	9.312	511.050	.000%	.000%	64.787%
83.0	84.280	9.221	520.272	.000%	.000%	65.956%
84.0	83.148	9.121	529.393	.000%	.000%	67.113%
85.0	82.048	9.016	538.409	.000%	.000%	68.256%
86.0	80.810	8.902	547.311	.000%	.000%	69.384%
87.0	79.698	8.784	556.095	.000%	.000%	70.498%
88.0	78.495	8.666	564.761	.000%	.000%	71.596%
89.0	77.200	8.534	573.295	.000%	.000%	72.678%
90.0	76.025	8.401	581.696	.000%	.000%	73.743%
91.0	74.848	8.272	589.968	.000%	.000%	74.792%
92.0	73.496	8.131	598.099	.000%	.000%	75.823%
93.0	72.315	7.987	606.086	.000%	.000%	76.835%
94.0	71.234	7.856	613.942	.000%	.000%	77.831%
95.0	69.846	7.712	621.654	.000%	.000%	78.809%
96.0	68.703	7.562	629.216	.000%	.000%	79.767%
97.0	67.539	7.422	636.638	.000%	.000%	80.708%
98.0	66.296	7.275	643.914	.000%	.000%	81.631%
99.0	65.096	7.125	651.039	.000%	.000%	82.534%
100.0	63.928	6.977	658.016	.000%	.000%	83.419%
101.0	62.640	6.824	664.840	.000%	.000%	84.284%
102.0	61.363	6.663	671.502	.000%	.000%	85.128%
103.0	60.129	6.504	678.006	.000%	.000%	85.953%
104.0	58.719	6.336	684.342	.000%	.000%	86.756%
105.0	57.361	6.162	690.504	.000%	.000%	87.537%
106.0	55.995	5.989	696.494	.000%	.000%	88.296%
107.0	54.478	5.808	702.301	.000%	.000%	89.033%
108.0	52.897	5.615	707.916	.000%	.000%	89.745%
109.0	51.245	5.415	713.331	.000%	.000%	90.431%
110.0	49.507	5.207	718.539	.000%	.000%	91.091%
111.0	47.468	4.980	723.519	.000%	.000%	91.723%
112.0	45.302	4.733	728.252	.000%	.000%	92.323%
113.0	42.696	4.458	732.710	.000%	.000%	92.888%

$\gamma(^{\circ})$	Average I(cd)	Zonal F(lm)	Sum F(lm)	Eff Flux(%)	Eff Sum(%)	Sum/Lum(%)
114.0	40.216	4.169	736.879	.000%	.000%	93.416%
115.0	37.771	3.891	740.770	.000%	.000%	93.910%
116.0	35.427	3.623	744.392	.000%	.000%	94.369%
117.0	33.263	3.371	747.763	.000%	.000%	94.796%
118.0	31.486	3.149	750.912	.000%	.000%	95.195%
119.0	30.057	2.965	753.877	.000%	.000%	95.571%
120.0	28.611	2.800	756.677	.000%	.000%	95.926%
121.0	27.396	2.646	759.323	.000%	.000%	96.262%
122.0	26.094	2.501	761.824	.000%	.000%	96.579%
123.0	24.691	2.349	764.172	.000%	.000%	96.876%
124.0	23.332	2.196	766.368	.000%	.000%	97.155%
125.0	21.726	2.036	768.404	.000%	.000%	97.413%
126.0	20.319	1.877	770.281	.000%	.000%	97.651%
127.0	19.044	1.735	772.016	.000%	.000%	97.871%
128.0	17.694	1.598	773.614	.000%	.000%	98.073%
129.0	16.455	1.465	775.079	.000%	.000%	98.259%
130.0	15.339	1.345	776.424	.000%	.000%	98.430%
131.0	14.142	1.229	777.654	.000%	.000%	98.585%
132.0	12.991	1.114	778.768	.000%	.000%	98.727%
133.0	11.963	1.009	779.777	.000%	.000%	98.855%
134.0	10.918	.910	780.687	.000%	.000%	98.970%
135.0	9.945	.816	781.503	.000%	.000%	99.073%
136.0	9.017	.729	782.231	.000%	.000%	99.166%
137.0	8.144	.648	782.879	.000%	.000%	99.248%
138.0	7.422	.577	783.456	.000%	.000%	99.321%
139.0	6.817	.517	783.973	.000%	.000%	99.387%
140.0	6.247	.465	784.438	.000%	.000%	99.445%
141.0	5.664	.415	784.854	.000%	.000%	99.498%
142.0	5.178	.370	785.224	.000%	.000%	99.545%
143.0	4.776	.332	785.556	.000%	.000%	99.587%
144.0	4.430	.300	785.856	.000%	.000%	99.625%
145.0	4.133	.273	786.129	.000%	.000%	99.660%
146.0	3.908	.250	786.379	.000%	.000%	99.691%
147.0	3.735	.231	786.610	.000%	.000%	99.721%
148.0	3.580	.216	786.826	.000%	.000%	99.748%
149.0	3.452	.201	787.027	.000%	.000%	99.774%
150.0	3.318	.188	787.215	.000%	.000%	99.798%
151.0	3.158	.175	787.390	.000%	.000%	99.820%

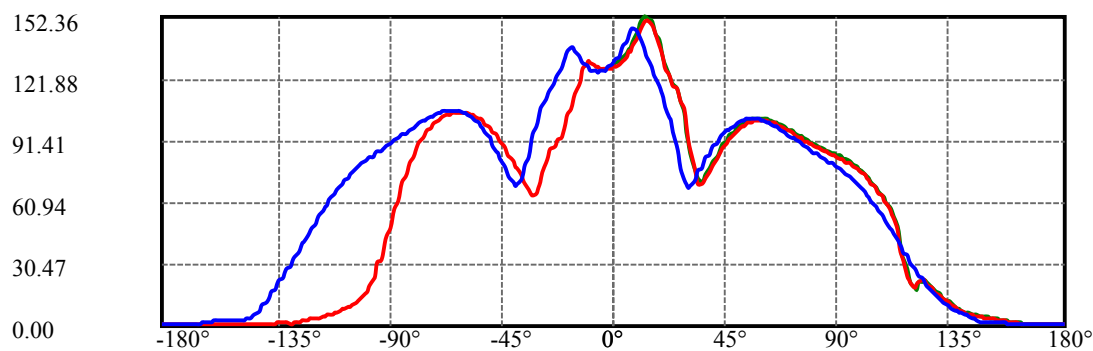
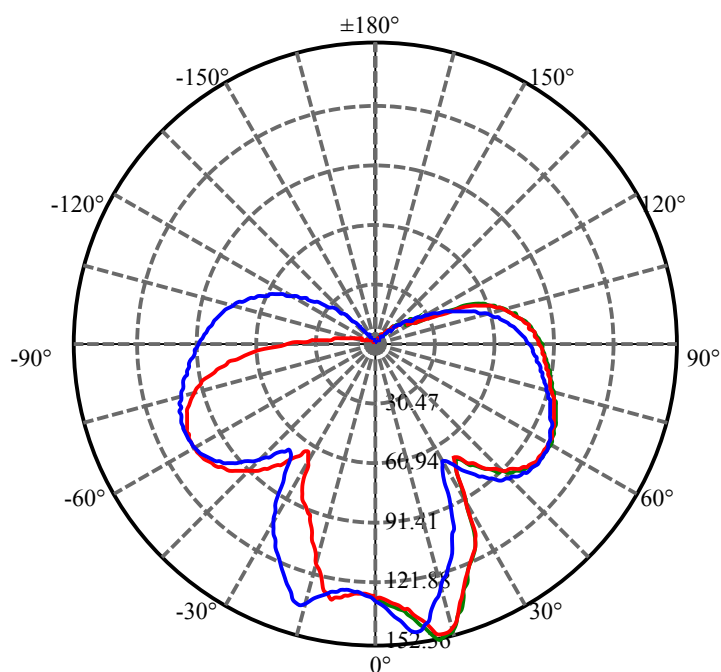
$\gamma(^{\circ})$	Average I(cd)	Zonal F(lm)	Sum F(lm)	Eff Flux(%)	Eff Sum(%)	Sum/Lum(%)
152.0	3.005	.161	787.552	.000%	.000%	99.840%
153.0	2.850	.148	787.700	.000%	.000%	99.859%
154.0	2.694	.136	787.835	.000%	.000%	99.876%
155.0	2.532	.123	787.959	.000%	.000%	99.892%
156.0	2.398	.112	788.071	.000%	.000%	99.906%
157.0	2.249	.102	788.173	.000%	.000%	99.919%
158.0	2.066	.091	788.263	.000%	.000%	99.930%
159.0	1.890	.079	788.343	.000%	.000%	99.940%
160.0	1.711	.069	788.412	.000%	.000%	99.949%
161.0	1.538	.059	788.471	.000%	.000%	99.957%
162.0	1.377	.051	788.522	.000%	.000%	99.963%
163.0	1.253	.043	788.565	.000%	.000%	99.969%
164.0	1.154	.037	788.603	.000%	.000%	99.973%
165.0	1.053	.032	788.635	.000%	.000%	99.978%
166.0	.973	.028	788.663	.000%	.000%	99.981%
167.0	.901	.024	788.687	.000%	.000%	99.984%
168.0	.833	.021	788.707	.000%	.000%	99.987%
169.0	.781	.018	788.725	.000%	.000%	99.989%
170.0	.760	.015	788.740	.000%	.000%	99.991%
171.0	.749	.014	788.754	.000%	.000%	99.993%
172.0	.755	.012	788.766	.000%	.000%	99.994%
173.0	.755	.011	788.777	.000%	.000%	99.996%
174.0	.762	.009	788.787	.000%	.000%	99.997%
175.0	.762	.008	788.795	.000%	.000%	99.998%
176.0	.768	.007	788.801	.000%	.000%	99.999%
177.0	.768	.005	788.806	.000%	.000%	99.999%
178.0	.767	.004	788.810	.000%	.000%	100.000%
179.0	.765	.002	788.812	.000%	.000%	100.000%
180.0	.768	.001	788.813	.000%	.000%	100.000%

## ZONAL LUMEN SUMMARY

Zone	Lumens	%Lamp	%Fixt
0-30	94.97	N.A.	12.04%
0-40	142.14	N.A.	18.02%
0-60	297.78	N.A.	37.75%
0-90	581.70	N.A.	73.74%
0-120	756.68	N.A.	95.93%
0-180	788.81	N.A.	100.00%
60-90	293.32	N.A.	37.18%
90-120	183.38	N.A.	23.25%
90-130	203.13	N.A.	25.75%
90-150	213.92	N.A.	27.12%
90-180	215.52	N.A.	27.32%
0-96.25	631.05	N.A.	80.00%

## ZONAL LUMEN SUMMARY

0-10	12.73
10-20	36.54
20-30	45.71
30-40	47.17
40-50	67.79
50-60	87.85
60-70	97.44
70-80	97.12
80-90	89.35
90-100	76.32
100-110	60.52
110-120	38.14
120-130	19.75
130-140	8.01
140-150	2.78
150-160	1.20
160-170	0.33
170-180	0.07



C10(Max): —————

C0/C180: —————

C90/C270: —————

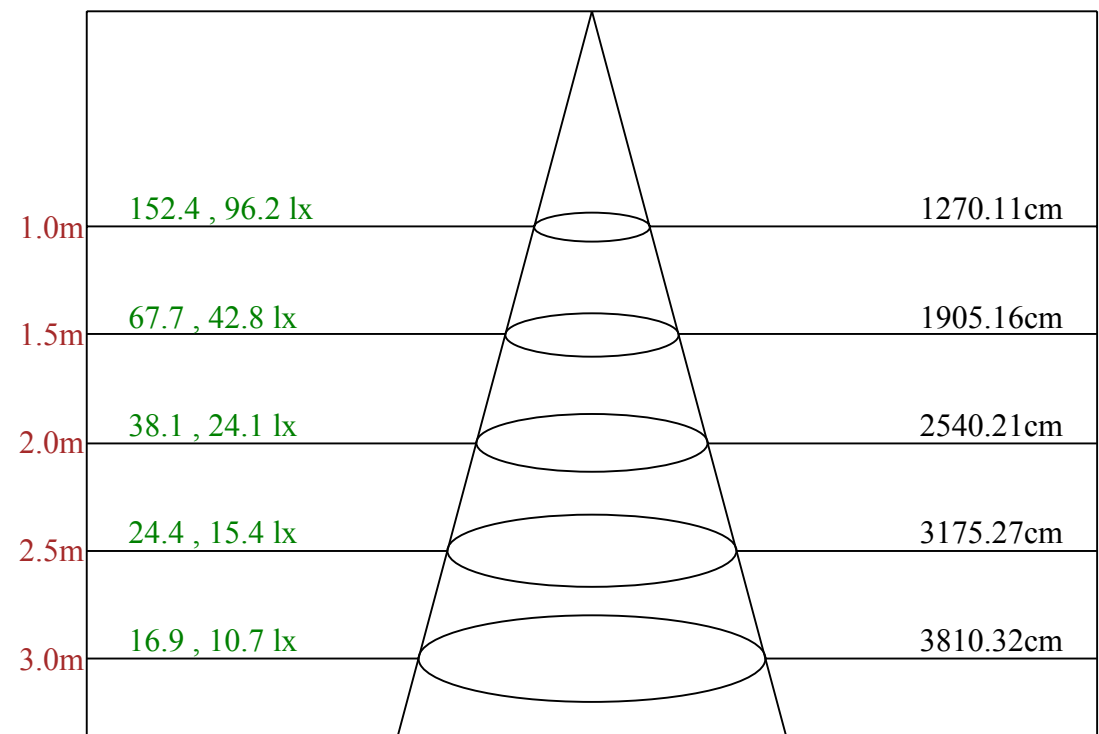
Field angle(10%Imax):C0/180Left:112.7 Right:117.1

:C90/270Left:144.9 Right:121.1

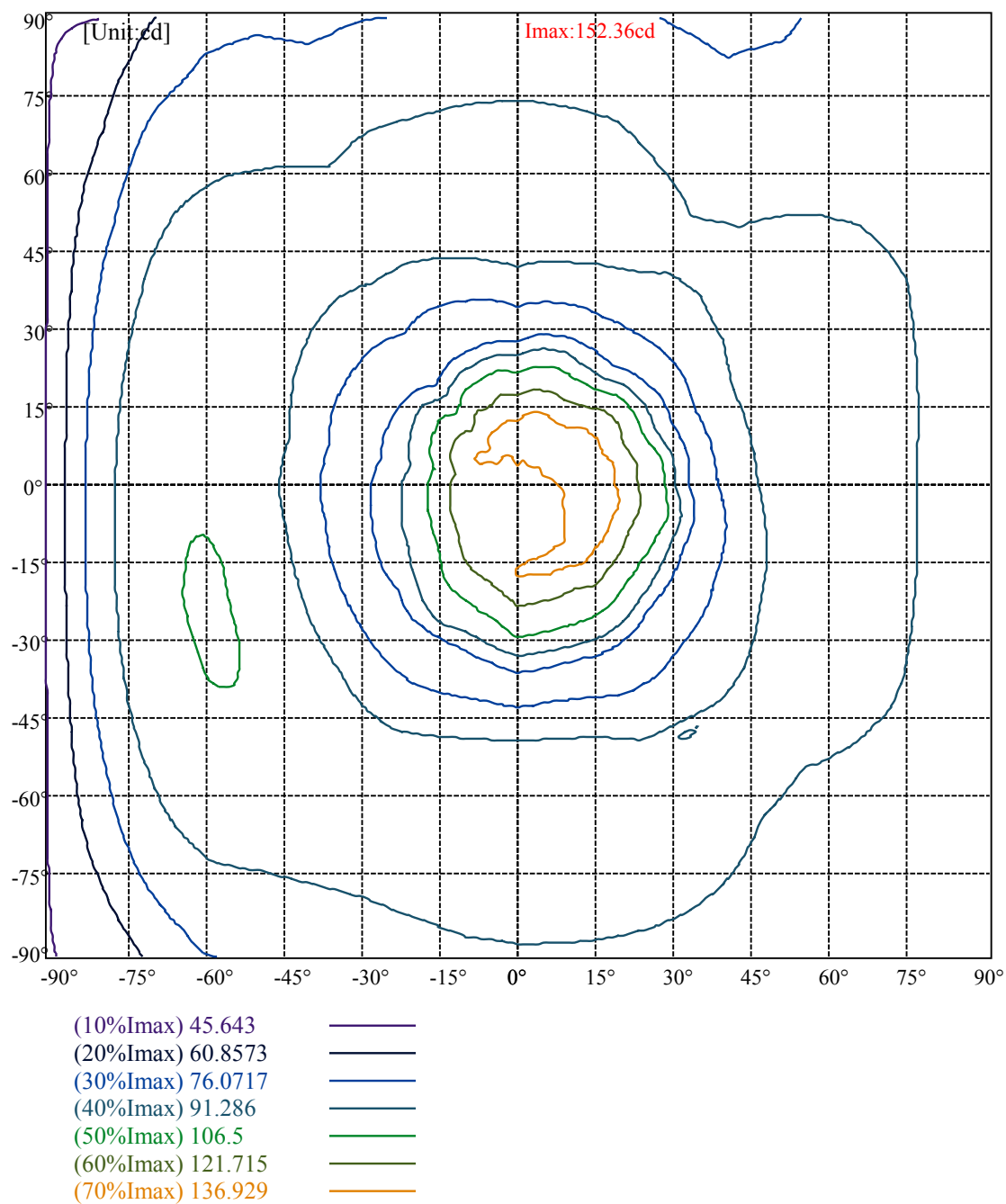
Beam Angle(50%Imax):C0/180Left:95.6 Right:86.1

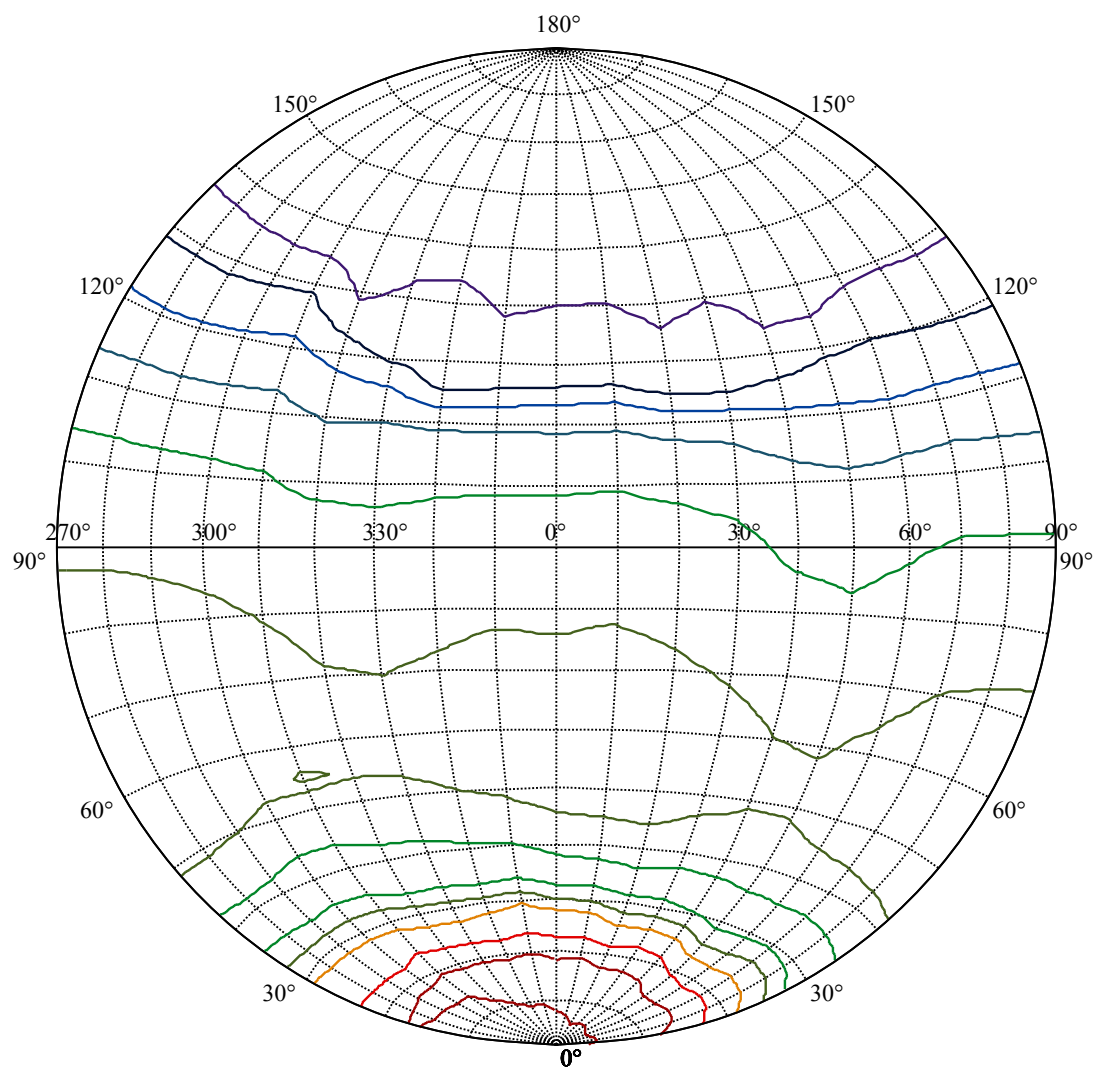
:C90/270Left:114.0 Right:86.3





Max , Ave      Beam angle of C10plane193.56





[Unit:cd]

Imax:152.36

(10%Imax) 15.2356

(20%Imax) 30.4712

(30%Imax) 45.7068

(40%Imax) 60.9424

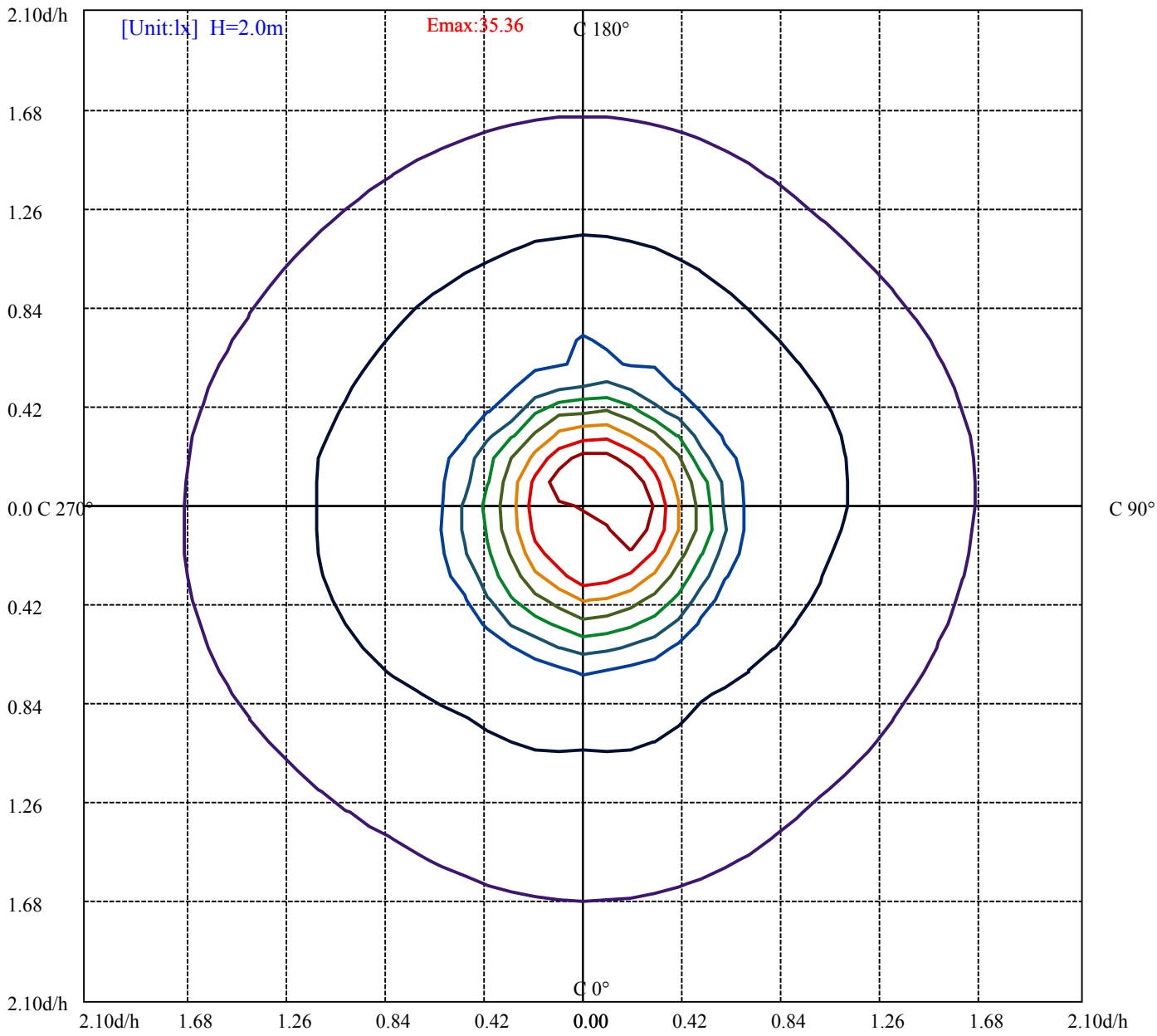
(50%Imax) 76.178

(60%Imax) 91.4136

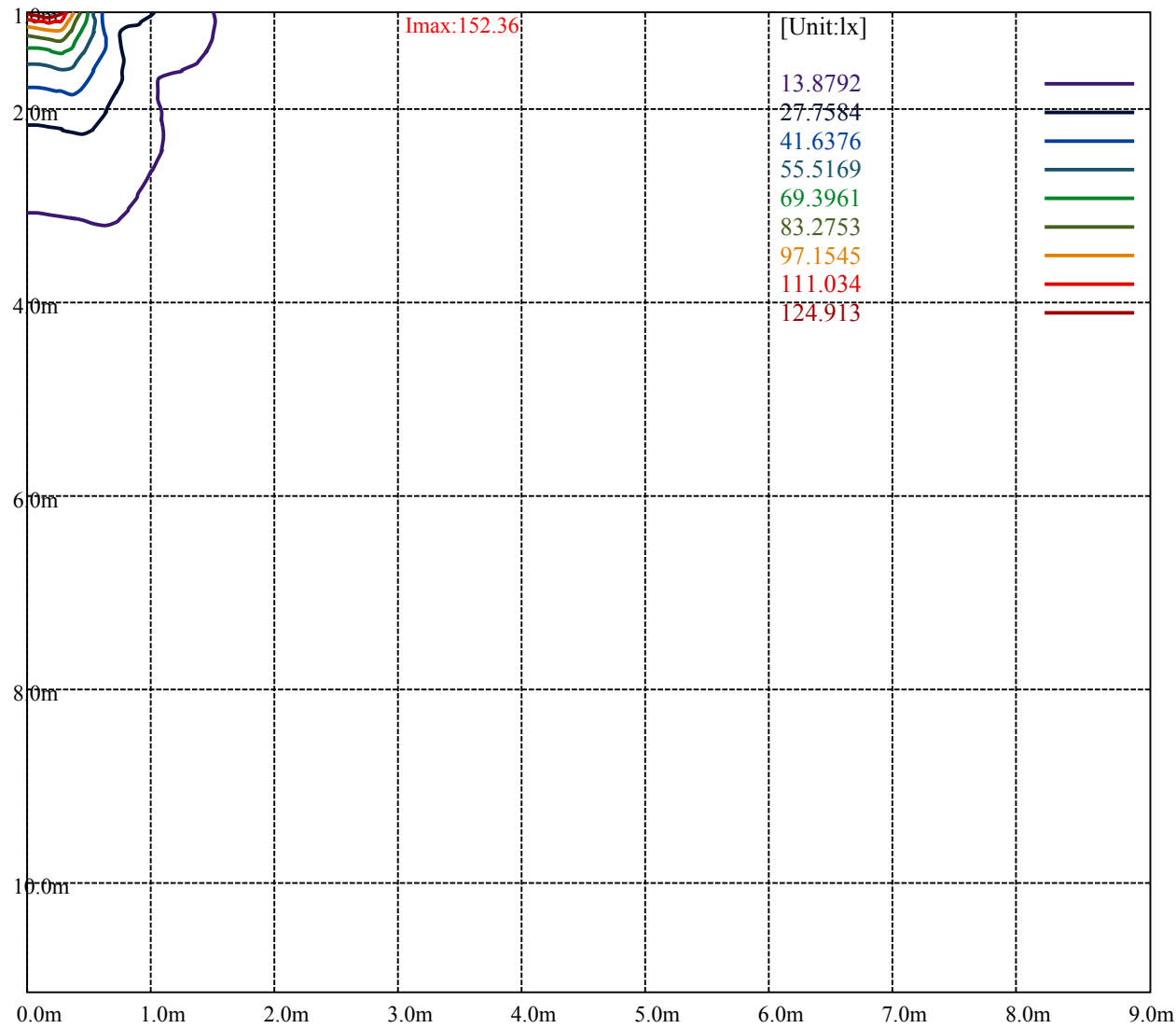
(70%Imax) 106.649

(80%Imax) 121.885

(90%Imax) 137.12



(10%Emax) 3.536125	—
(20%Emax) 7.072275	—
(30%Emax) 10.6084	—
(40%Emax) 14.14452	—
(50%Emax) 17.68068	—
(60%Emax) 21.2168	—
(70%Emax) 24.75295	—
(80%Emax) 28.289	—
(90%Emax) 31.82525	—



## Intensity data(cd)

Page: 14 Total:34

C/γ(°)	0.0	1.0	2.0	3.0	4.0	5.0	6.0	7.0	8.0
0.0	128.62	127.75	128.82	129.95	130.92	132.64	135.08	135.38	137.84
10.0	128.86	129.47	130.66	131.83	132.80	134.67	135.88	137.66	139.90
20.0	129.47	130.28	132.03	133.60	135.74	137.23	139.39	141.23	144.82
30.0	128.20	129.06	130.40	132.43	133.76	135.66	138.30	140.08	142.70
40.0	127.77	129.35	130.86	132.17	134.49	136.49	138.18	141.45	144.23
50.0	129.08	130.21	131.97	134.37	135.90	138.42	141.77	143.99	147.00
60.0	129.21	130.96	133.34	134.89	137.21	139.84	141.98	145.79	148.13
70.0	127.79	129.65	130.88	132.80	135.40	137.74	139.74	140.44	146.25
80.0	128.52	129.53	131.53	133.42	134.91	137.80	140.52	142.66	146.29
90.0	129.59	131.49	132.88	134.87	137.80	139.82	142.66	145.97	146.61
100.0	128.46	129.63	130.72	132.76	134.67	136.31	139.51	142.26	144.30
110.0	126.81	127.85	128.84	130.86	132.64	134.15	136.91	139.76	141.83
120.0	128.14	128.92	130.46	131.87	133.04	134.95	136.57	139.61	141.87
130.0	129.83	130.74	132.43	134.11	135.62	136.71	140.22	140.24	138.08
140.0	128.56	129.25	129.83	130.80	132.25	133.28	134.91	137.34	138.57
150.0	128.98	129.17	129.71	130.40	131.04	132.41	133.40	135.00	137.03
160.0	128.26	128.40	128.60	128.96	129.55	130.60	131.44	132.72	134.77
170.0	127.65	127.53	127.77	127.85	128.60	129.29	129.99	131.12	132.66
180.0	127.15	126.79	126.50	126.52	126.56	126.91	127.37	128.06	128.96
190.0	128.86	128.24	127.73	127.53	127.51	127.77	128.06	128.56	129.23
200.0	129.47	128.48	127.59	127.27	126.74	126.79	127.03	127.39	127.83
210.0	128.20	127.01	126.34	126.00	125.66	125.57	125.70	126.12	126.95
220.0	127.77	127.01	126.18	125.51	125.21	124.79	124.77	124.95	125.64
230.0	129.08	127.65	126.20	125.51	124.81	124.22	123.98	123.72	124.04
240.0	129.21	128.16	126.58	125.60	125.13	124.45	124.08	123.98	124.10
250.0	127.79	126.85	125.84	125.03	124.71	124.40	124.44	124.73	125.13
260.0	128.52	127.27	126.10	125.66	125.31	125.15	125.25	125.59	126.20
270.0	129.59	128.26	127.39	126.28	125.72	125.51	125.37	125.53	125.76
280.0	128.46	127.11	126.68	126.00	125.70	125.74	125.92	126.30	126.81
290.0	126.81	125.94	125.31	125.90	125.84	125.70	125.96	126.56	127.45
300.0	128.14	127.37	126.66	126.50	126.56	126.81	127.13	127.79	128.80
310.0	129.83	128.82	127.77	127.45	127.11	126.99	127.13	127.57	128.16
320.0	128.56	128.22	128.02	128.14	128.54	129.00	129.75	130.86	131.65
330.0	129.00	128.90	128.98	129.17	129.85	130.58	131.24	132.49	133.64
340.0	128.26	128.44	128.64	129.45	130.05	130.90	132.27	133.60	134.69
350.0	127.65	127.79	128.16	128.80	129.53	130.56	132.03	133.04	134.59
360.0	128.62	127.75	128.82	129.95	130.92	132.64	135.08	135.38	137.84

## Intensity data(cd)

Page: 15 Total:34

C/γ(°)	9.0	10.0	11.0	12.0	13.0	14.0	15.0	16.0	17.0
0.0	140.64	142.90	146.07	149.72	150.81	150.49	148.45	146.88	143.41
10.0	143.41	145.89	149.22	152.30	152.36	151.50	150.43	147.30	143.45
20.0	148.05	150.08	151.38	151.09	150.21	148.47	144.62	141.83	137.98
30.0	146.39	148.51	150.15	150.43	149.62	147.70	145.22	142.74	138.16
40.0	146.55	149.16	149.64	149.30	147.10	144.80	142.66	139.27	134.29
50.0	148.51	148.17	146.66	144.25	141.71	137.92	133.02	130.44	127.51
60.0	148.77	147.93	146.19	144.19	140.10	136.89	132.78	128.00	125.51
70.0	147.56	147.91	147.10	145.00	142.02	139.29	134.39	130.80	128.18
80.0	147.66	147.46	146.35	143.15	140.58	136.81	132.37	129.93	126.40
90.0	146.05	143.55	142.00	137.46	133.89	131.45	127.41	124.38	122.17
100.0	145.34	144.40	142.54	138.22	134.45	131.87	128.78	125.17	123.05
110.0	142.46	140.83	138.42	133.72	130.07	127.69	123.88	120.89	118.70
120.0	141.81	140.16	137.01	132.45	130.05	127.17	124.99	121.30	117.95
130.0	134.87	132.33	129.15	125.09	122.73	119.74	115.73	113.15	109.66
140.0	138.79	136.55	134.09	130.62	127.21	124.77	120.77	117.55	114.92
150.0	137.40	136.27	132.59	128.76	126.26	123.80	119.89	116.13	112.16
160.0	135.18	134.13	132.03	127.01	123.13	120.89	116.76	112.79	109.72
170.0	132.47	130.27	125.11	121.88	118.43	113.92	110.87	107.18	102.98
180.0	129.83	130.58	128.98	126.56	121.32	117.83	114.94	110.30	106.73
190.0	129.95	130.82	129.53	127.29	122.25	118.68	114.04	111.37	107.74
200.0	128.86	129.79	129.75	126.89	124.32	120.43	115.83	113.21	110.00
210.0	127.59	128.52	129.59	128.70	126.10	121.46	118.62	114.92	110.83
220.0	127.23	127.55	129.27	129.83	128.84	125.03	120.77	117.69	114.28
230.0	124.47	125.25	127.03	127.59	129.06	129.11	127.57	124.57	120.85
240.0	124.59	125.19	126.72	127.96	129.04	130.36	130.05	128.66	125.82
250.0	126.12	126.95	128.20	129.71	131.04	132.51	131.93	130.46	126.68
260.0	126.77	128.16	129.55	130.74	133.10	135.10	135.70	134.29	131.51
270.0	126.32	127.41	128.26	129.67	131.79	133.32	135.52	137.50	137.48
280.0	127.89	128.94	130.07	132.09	133.99	135.64	138.30	138.77	138.14
290.0	128.20	129.29	130.84	132.05	133.76	136.43	138.16	139.07	138.57
300.0	129.53	130.66	132.31	133.44	135.16	137.21	138.93	139.98	139.01
310.0	128.78	129.89	131.91	133.64	135.20	136.55	139.21	141.05	141.31
320.0	132.84	134.43	135.54	137.38	140.18	142.12	144.03	143.71	142.56
330.0	134.59	136.57	138.59	140.36	143.65	146.25	147.50	146.90	144.27
340.0	136.83	139.01	141.09	144.32	146.43	148.43	148.57	147.64	144.68
350.0	136.79	138.59	141.27	144.96	146.45	149.50	150.02	149.32	146.76
360.0	140.64	142.90	146.07	149.72	150.81	150.49	148.45	146.88	143.41

## Intensity data(cd)

Page: 16 Total:34

C/γ(°)	18.0	19.0	20.0	21.0	22.0	23.0	24.0	25.0	26.0
0.0	138.02	135.26	131.65	126.91	124.22	121.42	118.51	117.08	114.56
10.0	140.64	135.98	131.93	128.80	124.18	121.26	119.60	117.49	114.08
20.0	133.32	130.82	127.37	122.95	120.27	116.90	112.54	110.55	104.03
30.0	134.63	132.03	128.12	125.11	122.77	119.38	116.23	112.66	104.94
40.0	131.67	128.72	125.23	123.28	120.15	115.79	113.03	108.43	100.34
50.0	125.29	122.53	119.00	116.72	113.27	107.18	100.82	96.45	89.06
60.0	122.53	119.83	118.01	114.36	110.12	105.93	99.43	94.29	90.60
70.0	123.96	120.83	118.49	114.90	111.43	108.13	103.95	98.73	95.26
80.0	122.37	120.19	117.16	113.13	109.82	105.56	100.74	98.91	92.87
90.0	118.47	115.49	112.64	107.60	103.51	100.84	95.38	88.84	83.82
100.0	120.23	116.86	114.98	111.49	106.23	102.76	97.25	91.93	87.11
110.0	116.25	114.32	110.55	106.77	103.20	97.72	92.92	87.11	82.20
120.0	115.67	111.72	108.09	105.02	100.30	93.98	90.35	85.94	78.25
130.0	105.24	101.97	98.16	93.14	89.02	83.45	76.01	73.15	66.77
140.0	110.30	107.62	104.09	98.89	95.64	92.39	88.52	83.09	78.57
150.0	109.36	105.12	101.67	98.62	94.02	91.30	88.78	84.10	79.54
160.0	106.23	102.13	99.07	94.69	90.94	89.20	86.80	83.43	80.79
170.0	100.30	96.08	92.25	90.68	88.84	87.65	86.42	82.75	78.17
180.0	104.21	99.59	95.46	92.98	91.83	89.12	88.07	86.60	83.72
190.0	104.96	99.96	96.00	93.92	91.66	90.25	89.28	87.81	85.27
200.0	105.52	101.09	98.08	94.95	92.96	91.79	90.47	89.55	87.61
210.0	108.43	104.74	100.92	98.34	94.77	92.59	91.30	89.71	88.42
220.0	110.32	108.04	105.62	102.56	100.54	97.64	94.47	93.00	91.06
230.0	118.39	114.62	111.64	109.46	106.79	104.55	102.82	99.69	96.97
240.0	121.98	119.56	116.50	112.89	111.01	108.51	105.46	103.79	101.69
250.0	123.56	121.42	117.55	114.72	112.75	109.68	107.46	105.91	103.67
260.0	128.96	125.05	122.95	120.09	116.54	113.75	111.68	109.13	106.17
270.0	135.68	132.05	129.57	126.85	124.22	122.17	118.94	116.36	114.52
280.0	134.98	131.65	129.23	126.54	123.17	121.14	118.74	115.77	114.02
290.0	137.13	133.30	129.41	126.87	123.60	120.69	118.55	115.39	113.19
300.0	137.72	133.83	129.67	126.89	123.07	120.35	118.25	114.88	112.16
310.0	140.02	137.90	135.54	130.84	127.35	124.91	121.86	118.05	115.81
320.0	140.40	136.95	134.11	129.35	125.80	123.32	116.96	116.13	113.53
330.0	142.32	138.47	132.84	129.87	126.18	121.96	119.40	115.67	110.55
340.0	141.57	136.08	132.64	128.48	125.72	121.08	117.51	115.02	111.60
350.0	143.73	140.83	134.96	132.15	128.56	124.22	121.04	118.98	116.09
360.0	138.02	135.26	131.65	126.91	124.22	121.42	118.51	117.08	114.56



## Intensity data(cd)

Page: 17 Total:34

C/γ(°)	27.0	28.0	29.0	30.0	31.0	32.0	33.0	34.0	35.0
0.0	111.01	107.38	98.91	91.60	86.64	79.14	74.68	70.36	69.84
10.0	111.01	105.04	95.94	91.00	84.77	78.51	75.47	72.50	71.37
20.0	97.07	92.25	85.45	80.95	78.01	73.83	72.10	71.77	73.47
30.0	97.98	92.92	86.94	80.39	77.68	74.82	72.62	71.79	71.75
40.0	95.24	88.76	81.48	77.73	73.77	70.99	70.04	70.64	72.44
50.0	83.80	79.94	74.78	72.06	70.26	69.70	69.96	72.12	72.62
60.0	84.30	80.07	76.84	72.70	70.42	69.76	71.49	73.63	75.22
70.0	89.87	82.77	78.55	74.01	70.36	69.33	70.04	72.82	74.48
80.0	86.18	81.80	75.20	71.53	69.62	69.11	71.15	72.88	75.81
90.0	77.99	72.08	69.74	68.14	69.23	70.97	73.31	76.29	78.05
100.0	78.96	73.47	70.32	67.34	66.43	67.66	69.96	71.67	74.58
110.0	76.41	72.40	67.17	64.81	64.33	65.70	68.55	70.18	72.38
120.0	74.20	69.45	65.78	64.47	64.05	66.25	67.94	70.08	72.24
130.0	63.71	63.00	63.60	65.48	67.01	69.64	71.67	73.15	75.57
140.0	71.55	67.80	64.05	62.58	62.86	65.14	67.26	68.79	71.35
150.0	75.18	68.91	65.70	64.47	63.79	65.12	66.69	68.81	71.37
160.0	76.39	71.35	68.59	65.68	63.85	64.31	66.29	68.49	70.14
170.0	74.60	69.43	66.49	64.83	64.27	66.15	67.92	70.75	73.00
180.0	80.77	76.05	70.77	68.16	65.44	64.19	65.20	67.48	70.34
190.0	82.79	78.03	72.54	70.04	67.32	65.60	66.03	68.28	71.25
200.0	85.15	82.36	76.23	72.04	68.37	66.73	65.80	66.61	69.54
210.0	87.21	83.66	79.18	75.87	71.07	68.89	66.87	66.35	68.14
220.0	88.07	85.65	81.46	75.59	72.74	69.74	67.92	67.15	66.97
230.0	94.97	92.37	89.93	87.37	81.13	76.11	72.80	69.17	66.49
240.0	98.85	97.19	94.51	90.37	86.36	76.29	75.16	71.92	67.92
250.0	100.42	98.16	94.37	88.64	85.01	80.21	74.96	72.68	70.24
260.0	104.43	102.11	100.18	95.66	91.12	87.35	81.24	76.74	72.28
270.0	111.58	108.99	106.85	102.40	98.14	94.95	89.14	83.72	79.94
280.0	111.76	108.08	105.02	100.84	95.48	92.07	86.74	80.83	77.36
290.0	111.76	108.25	104.47	101.43	96.81	92.43	88.24	81.72	75.47
300.0	109.92	108.75	105.48	101.49	98.40	93.28	90.17	86.72	78.83
310.0	112.38	107.90	105.30	101.91	97.39	93.00	88.74	81.74	77.14
320.0	108.81	104.60	101.71	97.33	93.04	88.82	81.68	74.54	70.69
330.0	107.50	104.23	99.87	96.73	91.66	85.45	81.07	75.28	71.29
340.0	109.21	107.14	102.05	96.53	91.58	85.09	78.07	74.09	70.34
350.0	113.87	111.80	108.21	104.37	95.76	88.68	83.96	76.74	72.46
360.0	111.01	107.38	98.91	91.60	86.64	79.14	74.68	70.36	69.84

## Intensity data(cd)

Page: 18 Total:34

C/γ(°)	36.0	37.0	38.0	39.0	40.0	41.0	42.0	43.0	44.0
0.0	71.05	72.86	75.79	78.01	79.74	81.90	84.58	86.12	88.03
10.0	72.28	74.58	77.50	79.20	81.42	83.64	85.25	87.81	89.75
20.0	75.69	77.34	80.07	82.16	83.72	85.71	88.05	89.38	91.06
30.0	74.09	75.61	77.66	78.67	81.56	83.41	84.32	86.76	88.28
40.0	73.97	76.41	77.85	79.72	81.86	83.51	84.66	86.42	87.67
50.0	76.58	78.01	79.94	81.13	83.17	84.62	85.61	87.13	88.30
60.0	77.26	79.78	81.20	83.09	85.23	86.38	87.81	89.43	90.31
70.0	76.74	79.48	80.61	83.13	85.11	86.46	88.62	90.17	91.28
80.0	78.11	79.84	82.55	84.68	86.18	88.13	89.04	91.60	93.18
90.0	80.35	83.07	84.66	86.68	89.08	89.95	92.13	93.72	94.85
100.0	76.88	79.72	81.32	83.39	85.87	87.31	89.14	91.32	92.11
110.0	75.16	76.76	78.85	81.34	82.79	84.66	86.82	88.11	89.65
120.0	73.79	76.33	78.31	79.74	82.06	83.86	85.11	87.13	88.58
130.0	77.00	78.81	81.03	82.69	83.86	85.39	87.15	88.13	89.30
140.0	73.33	75.75	77.16	79.00	80.33	82.45	82.83	85.17	86.96
150.0	72.90	74.88	77.26	78.67	80.51	82.65	83.92	85.51	87.37
160.0	72.82	74.90	76.43	78.92	80.89	82.32	83.27	86.32	87.63
170.0	74.74	76.92	77.99	81.19	83.19	84.68	87.13	88.98	91.16
180.0	72.10	74.40	77.24	78.31	81.01	83.07	84.62	87.11	89.02
190.0	73.02	75.34	78.19	79.90	82.08	84.28	85.87	88.40	90.39
200.0	71.94	73.73	76.03	78.81	80.47	82.65	85.37	87.41	88.90
210.0	69.92	72.26	75.14	76.84	78.98	81.64	83.23	85.29	87.73
220.0	68.43	70.16	72.94	75.14	76.74	79.30	81.32	82.83	85.21
230.0	66.25	67.20	69.56	71.23	73.39	76.07	77.64	79.60	82.06
240.0	66.33	66.41	67.64	69.54	71.21	73.89	75.91	77.44	79.86
250.0	68.28	67.68	68.24	70.89	72.56	74.74	76.92	78.51	81.07
260.0	70.54	69.01	68.75	70.06	73.02	74.82	77.16	79.98	82.16
270.0	74.80	71.59	70.12	69.29	70.77	72.60	74.98	78.05	79.78
280.0	72.48	70.02	69.13	69.84	72.22	74.01	77.04	79.34	81.07
290.0	72.40	69.66	68.02	68.55	72.58	73.77	75.45	77.75	80.53
300.0	74.01	71.01	68.04	66.85	67.20	69.82	72.08	73.69	76.33
310.0	71.85	67.24	66.35	66.59	68.32	69.88	72.54	74.58	76.09
320.0	67.26	66.27	66.81	68.63	71.21	72.74	74.72	77.08	78.47
330.0	69.13	67.01	67.86	69.43	72.06	74.11	75.61	77.99	79.86
340.0	67.78	67.76	69.58	72.32	73.97	76.09	78.61	80.07	81.96
350.0	69.11	68.69	70.58	72.30	75.16	77.40	79.04	81.64	83.66
360.0	71.05	72.86	75.79	78.01	79.74	81.90	84.58	86.12	88.03

## Intensity data(cd)

Page: 19 Total:34

C/γ(°)	45.0	46.0	47.0	48.0	49.0	50.0	51.0	52.0	53.0
0.0	90.27	91.54	93.12	94.87	95.80	96.99	98.20	98.83	99.57
10.0	91.14	93.30	94.83	95.96	97.55	98.62	99.35	100.38	101.06
20.0	92.92	93.92	95.15	96.43	97.15	97.94	98.73	99.15	99.57
30.0	89.36	90.58	91.97	92.88	93.56	94.43	95.01	95.36	95.78
40.0	88.46	89.43	90.49	91.04	91.60	92.21	92.49	92.75	92.92
50.0	89.00	90.05	90.74	91.34	91.60	92.11	92.17	92.37	92.39
60.0	91.34	92.53	93.12	93.80	94.41	94.61	95.03	95.26	95.30
70.0	92.96	94.17	94.99	96.14	96.91	97.39	98.04	98.46	98.68
80.0	94.95	95.92	97.07	98.30	98.91	99.61	100.36	100.68	101.02
90.0	96.51	96.41	97.84	98.64	99.51	100.44	100.88	101.33	101.75
100.0	93.96	94.97	96.20	97.51	98.40	99.01	99.85	100.32	100.68
110.0	91.40	92.35	93.60	94.65	95.32	96.32	97.05	97.49	98.12
120.0	89.61	91.20	92.31	93.02	94.13	94.89	95.36	96.00	96.53
130.0	90.09	91.32	92.15	93.10	93.56	94.07	94.63	94.91	95.15
140.0	88.26	89.18	90.27	91.50	92.19	92.94	93.78	94.21	94.71
150.0	88.40	89.71	90.90	91.70	92.98	93.84	94.45	95.40	96.02
160.0	89.63	91.06	92.09	93.74	94.91	95.74	96.77	97.88	98.46
170.0	92.39	93.96	95.74	96.75	98.00	99.17	99.96	101.13	101.85
180.0	90.41	92.51	94.17	95.30	97.15	98.48	99.37	100.82	101.73
190.0	91.79	94.04	95.72	96.95	98.81	100.18	101.15	102.58	103.61
200.0	91.30	92.71	94.47	96.47	97.64	99.07	100.72	101.87	102.74
210.0	89.18	91.00	93.14	94.37	95.88	97.64	98.34	99.87	100.72
220.0	87.07	88.36	90.43	92.37	93.04	94.41	95.92	96.73	97.72
230.0	83.43	85.27	86.98	88.32	90.23	91.60	92.67	94.17	95.28
240.0	81.70	83.07	84.85	86.96	88.17	89.67	91.38	92.35	93.52
250.0	83.05	84.48	86.78	88.54	89.87	91.81	93.98	94.33	95.86
260.0	83.76	86.32	88.26	89.71	92.03	93.34	94.95	96.83	97.86
270.0	82.04	84.81	86.42	88.52	92.33	94.13	95.80	97.01	98.83
280.0	83.86	86.02	87.59	90.03	91.95	93.30	95.05	97.05	98.08
290.0	82.10	84.24	86.76	87.77	90.03	91.79	93.06	94.95	96.38
300.0	78.45	80.43	81.88	84.24	85.63	87.31	89.30	90.43	91.83
310.0	78.49	81.70	83.82	85.39	86.52	88.28	89.53	90.43	91.52
320.0	80.27	82.34	83.53	84.97	86.36	87.31	88.74	89.77	90.49
330.0	81.15	83.21	84.77	85.83	87.11	88.58	89.38	90.33	91.34
340.0	83.84	85.17	87.11	88.56	89.55	91.08	92.09	92.85	93.94
350.0	85.65	87.05	89.20	90.78	91.83	93.52	94.41	95.46	96.61
360.0	90.27	91.54	93.12	94.87	95.80	96.99	98.20	98.83	99.57

## Intensity data(cd)

Page: 20 Total:34

C/γ(°)	54.0	55.0	56.0	57.0	58.0	59.0	60.0	61.0	62.0
0.0	100.24	100.62	100.98	101.17	101.23	101.19	101.15	100.96	100.58
10.0	101.43	101.87	102.23	102.32	102.38	102.32	102.17	101.95	101.55
20.0	99.94	100.10	100.18	100.16	100.04	99.85	99.57	99.35	99.09
30.0	96.00	96.12	96.14	96.12	96.04	95.74	95.46	95.21	94.83
40.0	92.92	92.92	92.77	92.61	92.35	92.11	91.66	91.24	90.80
50.0	92.41	92.23	92.03	91.70	91.42	90.88	90.53	90.03	89.34
60.0	95.36	95.28	95.22	94.91	94.57	94.27	93.72	93.20	92.83
70.0	98.91	98.97	98.91	98.85	98.56	98.32	97.92	97.37	96.97
80.0	101.29	101.33	101.33	101.17	101.00	100.64	100.20	99.83	99.17
90.0	101.91	102.05	102.05	101.93	101.75	101.47	101.17	100.56	100.02
100.0	101.06	101.17	101.27	101.19	101.07	100.88	100.40	99.98	99.63
110.0	98.42	98.60	98.79	98.83	98.73	98.52	98.18	97.98	97.43
120.0	96.79	97.05	97.25	97.29	97.19	97.05	96.87	96.57	96.12
130.0	95.36	95.42	95.40	95.34	95.22	94.93	94.63	94.35	93.84
140.0	95.19	95.42	95.68	95.86	95.92	95.92	95.84	95.68	95.42
150.0	96.38	96.95	97.31	97.49	97.72	97.84	97.78	97.74	97.55
160.0	99.19	99.94	100.34	100.82	101.17	101.45	101.51	101.41	101.23
170.0	102.40	103.10	103.57	103.85	104.15	104.29	104.37	104.25	104.11
180.0	102.34	103.16	103.99	104.43	104.74	105.22	105.36	105.44	105.34
190.0	104.31	105.10	105.91	106.31	106.77	107.16	107.34	107.44	107.42
200.0	103.73	104.39	105.36	105.95	106.31	106.79	107.08	107.18	107.26
210.0	101.67	102.80	103.47	103.97	104.57	104.96	105.20	105.40	105.48
220.0	98.81	99.39	100.06	100.78	101.17	101.43	101.73	101.81	101.79
230.0	95.98	97.13	97.86	98.32	98.97	99.43	99.65	99.83	100.04
240.0	94.83	95.52	96.32	97.23	97.70	98.24	98.72	98.89	99.15
250.0	96.99	97.72	98.81	99.55	100.04	100.64	101.15	101.41	101.63
260.0	99.13	100.22	101.41	102.07	102.80	103.55	103.97	104.39	104.60
270.0	100.14	101.04	102.32	103.20	103.79	104.62	105.16	105.52	105.89
280.0	99.39	100.90	101.63	102.54	103.49	103.99	104.55	105.04	105.26
290.0	97.29	98.77	99.73	100.42	101.37	102.03	102.40	102.94	103.28
300.0	93.40	94.27	95.26	96.41	96.99	97.60	98.34	98.58	99.09
310.0	92.65	90.53	91.32	92.21	92.85	93.74	94.31	94.69	95.13
320.0	91.48	92.15	92.61	93.16	93.52	93.74	93.96	94.09	94.15
330.0	91.85	92.47	93.10	93.36	93.64	93.86	93.90	93.94	93.86
340.0	94.65	95.07	95.68	96.04	96.26	96.43	96.49	96.45	96.39
350.0	97.17	97.82	98.52	98.87	99.11	99.31	99.39	99.31	99.19
360.0	100.24	100.62	100.98	101.17	101.23	101.19	101.15	100.96	100.58

## Intensity data(cd)

Page: 21 Total:34

C/γ(°)	63.0	64.0	65.0	66.0	67.0	68.0	69.0	70.0	71.0
0.0	100.18	99.85	99.21	98.62	98.14	97.35	96.65	96.12	95.19
10.0	101.25	100.78	100.10	99.67	99.03	98.20	97.64	96.91	96.16
20.0	98.30	97.92	97.21	96.57	96.08	95.22	94.53	94.00	93.04
30.0	94.29	93.88	93.38	92.63	92.15	91.54	90.68	90.23	89.57
40.0	90.37	89.67	89.04	88.62	87.75	87.13	86.66	85.79	85.27
50.0	88.88	88.32	87.61	87.09	86.30	85.59	84.97	84.20	83.53
60.0	92.09	91.40	90.92	90.25	89.36	88.80	88.11	87.15	86.64
70.0	96.41	95.64	95.13	94.45	93.56	92.98	92.27	91.48	90.94
80.0	98.54	98.00	97.13	96.38	95.78	94.77	93.96	93.30	92.29
90.0	99.57	98.73	98.02	97.45	96.45	95.66	95.05	93.96	93.08
100.0	99.03	98.60	97.68	96.97	96.43	95.42	94.59	93.50	92.87
110.0	96.95	96.47	95.88	95.05	94.49	93.78	92.87	92.33	91.48
120.0	95.78	95.30	94.73	94.31	93.50	92.85	92.31	91.40	90.60
130.0	93.32	92.90	92.23	91.58	91.06	90.17	89.59	88.82	87.87
140.0	95.13	94.81	94.27	93.70	93.28	92.55	91.91	91.30	90.41
150.0	97.35	97.03	96.57	96.22	95.68	94.95	94.45	93.72	92.79
160.0	100.96	100.68	100.26	99.75	99.31	98.44	97.64	97.03	95.82
170.0	103.93	103.49	103.06	102.62	101.77	100.94	100.22	99.23	97.76
180.0	105.26	104.94	104.57	104.31	103.67	102.82	102.24	101.31	100.28
190.0	107.36	107.16	106.71	106.41	105.83	104.98	104.45	103.57	102.56
200.0	107.18	106.96	106.77	106.41	106.03	105.38	104.68	104.09	103.22
210.0	105.46	105.28	105.16	104.84	104.47	103.81	103.40	102.74	101.79
220.0	101.75	101.61	101.39	101.09	100.86	100.22	99.67	99.25	98.40
230.0	100.10	100.02	99.87	99.67	99.37	98.89	98.58	98.12	97.37
240.0	99.27	99.33	99.25	99.07	98.93	98.60	98.24	97.92	97.37
250.0	101.77	101.79	101.75	101.57	101.37	101.09	100.66	100.34	99.81
260.0	104.80	104.88	104.86	104.72	104.49	104.07	103.79	103.38	102.82
270.0	106.07	106.13	106.09	105.99	105.79	105.52	105.02	104.74	104.25
280.0	105.44	105.48	105.44	105.34	105.12	104.90	104.49	104.07	103.69
290.0	103.45	103.55	103.53	103.45	103.30	103.00	102.72	102.36	101.79
300.0	99.29	99.49	99.69	99.65	99.59	99.45	99.21	99.01	98.58
310.0	95.48	95.62	95.82	95.90	95.88	95.80	95.64	95.46	95.21
320.0	94.09	94.00	93.88	93.66	93.28	93.02	92.65	92.09	91.75
330.0	93.76	93.54	93.28	93.02	92.61	92.21	91.85	91.26	90.74
340.0	96.16	96.02	95.72	95.21	94.87	94.39	93.70	93.30	92.77
350.0	99.07	98.77	98.42	98.10	97.58	97.01	96.20	95.72	95.09
360.0	100.18	99.85	99.21	98.62	98.14	97.35	96.65	96.12	95.19

## Intensity data(cd)

Page: 22 Total:34

C/γ(°)	72.0	73.0	74.0	75.0	76.0	77.0	78.0	79.0	80.0
0.0	94.49	93.94	93.18	92.31	91.14	90.96	90.11	89.57	88.94
10.0	95.54	94.61	93.84	93.26	92.37	91.66	91.12	90.29	89.59
20.0	92.37	91.83	91.14	90.31	89.79	89.16	88.38	87.95	87.33
30.0	88.70	88.19	87.57	86.94	86.44	85.73	85.09	84.66	83.92
40.0	84.60	83.76	83.05	82.61	81.84	81.22	80.83	80.25	79.82
50.0	82.97	82.16	81.50	81.05	80.29	79.66	79.24	78.47	77.91
60.0	85.92	85.07	84.60	83.88	83.05	82.57	81.90	81.11	80.65
70.0	89.99	89.20	88.66	87.71	86.94	86.42	85.51	84.77	84.26
80.0	91.42	90.74	89.71	88.88	88.24	87.23	86.42	85.81	84.85
90.0	92.41	91.52	90.45	89.79	88.92	87.87	87.21	86.40	85.39
100.0	91.99	90.88	90.21	89.34	88.70	87.79	86.72	86.10	85.27
110.0	90.51	89.83	89.00	87.99	87.33	86.46	85.45	85.01	84.04
120.0	90.05	89.04	88.21	87.57	86.54	85.71	85.09	84.02	83.19
130.0	87.09	86.48	85.65	84.62	83.98	83.15	82.53	81.48	80.65
140.0	89.63	89.00	87.95	87.11	86.46	85.57	84.48	83.76	82.89
150.0	92.11	91.28	90.19	89.43	88.46	87.19	86.40	85.31	84.20
160.0	94.81	93.98	92.47	91.16	90.11	88.21	86.52	85.19	83.37
170.0	96.79	95.36	93.40	92.09	90.15	87.51	85.79	83.29	79.92
180.0	99.33	97.72	96.12	94.89	92.63	90.58	88.84	85.73	82.99
190.0	101.73	100.14	98.64	97.43	95.21	93.22	91.66	88.74	86.14
200.0	102.09	101.25	100.10	98.50	97.05	95.92	93.80	91.99	90.53
210.0	101.19	100.30	99.09	98.30	97.19	96.38	94.87	93.56	91.89
220.0	97.66	97.09	96.06	95.13	94.45	93.20	92.25	91.46	90.43
230.0	96.99	96.32	95.34	94.77	94.02	92.96	92.53	91.36	90.49
240.0	96.83	96.43	95.66	94.97	94.45	93.72	92.79	92.21	91.38
250.0	99.07	98.77	97.98	97.31	96.73	95.82	95.07	94.49	93.48
260.0	102.40	101.61	101.11	100.40	99.45	98.85	98.06	97.05	96.18
270.0	103.51	103.06	102.34	101.43	100.90	100.08	99.05	98.46	97.62
280.0	103.04	102.38	101.85	101.02	99.90	99.69	98.72	97.92	97.33
290.0	101.45	100.84	100.14	99.61	98.91	98.08	97.66	96.77	96.02
300.0	98.18	97.82	97.23	96.75	96.32	95.64	94.93	94.43	93.76
310.0	94.75	94.51	94.09	93.54	93.28	92.61	92.09	91.34	90.92
320.0	91.30	90.66	90.27	89.73	89.00	88.58	88.01	87.23	87.09
330.0	90.33	89.63	89.08	88.66	87.99	87.41	86.96	86.42	85.73
340.0	91.99	91.60	90.96	90.17	89.87	89.10	88.48	88.07	87.33
350.0	94.35	93.86	93.16	92.67	91.99	91.12	90.58	89.95	89.14
360.0	94.49	93.94	93.18	92.31	91.14	90.96	90.11	89.57	88.94

## Intensity data(cd)

Page: 23 Total:34

C/γ(°)	81.0	82.0	83.0	84.0	85.0	86.0	87.0	88.0	89.0
0.0	88.15	87.67	87.04	86.32	85.85	85.27	84.64	84.16	83.35
10.0	89.14	88.38	87.79	87.31	86.54	85.98	85.51	84.89	84.20
20.0	86.60	86.18	85.63	84.91	84.48	83.92	83.25	82.95	82.28
30.0	83.37	82.93	82.26	81.74	81.36	80.71	80.19	79.80	79.20
40.0	79.12	78.57	78.21	77.52	76.94	76.33	75.47	74.82	74.44
50.0	77.36	76.92	76.21	75.75	75.26	74.60	74.20	73.77	72.94
60.0	80.05	79.38	78.94	78.19	77.66	77.20	76.47	75.83	75.37
70.0	83.35	82.63	82.12	81.24	80.59	80.13	79.50	78.67	78.15
80.0	84.08	83.47	82.49	81.72	81.17	80.43	79.60	79.02	78.27
90.0	84.75	83.94	82.93	82.28	81.52	80.59	80.03	79.24	78.43
100.0	84.20	83.33	82.71	81.66	80.91	80.33	79.32	78.53	77.89
110.0	83.15	82.53	82.10	81.30	80.07	79.16	79.00	77.73	76.70
120.0	82.55	81.72	80.63	79.98	79.12	78.09	77.52	76.64	75.55
130.0	79.98	78.88	77.99	76.96	76.33	75.51	74.42	73.95	72.86
140.0	81.76	80.87	80.13	78.92	78.21	77.28	76.21	75.55	74.66
150.0	83.41	81.96	80.79	78.27	77.00	76.07	74.48	73.13	72.16
160.0	80.91	79.36	77.12	74.11	72.22	69.68	66.33	64.35	61.71
170.0	77.73	74.64	71.19	68.53	63.77	59.81	56.77	51.92	47.93
180.0	80.83	76.84	74.28	70.64	66.65	61.28	57.90	53.42	47.99
190.0	84.06	80.23	76.86	74.22	69.49	65.44	62.23	57.83	52.23
200.0	87.93	86.24	83.78	80.53	79.18	75.51	72.46	68.55	66.11
210.0	90.86	89.43	87.97	86.78	84.73	83.05	81.76	79.58	77.75
220.0	89.06	88.21	87.11	85.67	84.83	83.72	82.30	81.40	80.21
230.0	89.75	88.60	87.63	86.94	85.75	84.75	84.00	82.81	81.78
240.0	90.37	89.75	88.92	87.87	87.27	86.40	85.37	84.73	83.82
250.0	92.65	92.05	90.94	90.13	89.51	88.46	87.59	86.96	86.10
260.0	95.56	94.47	93.60	92.94	92.09	91.44	90.35	89.51	88.42
270.0	96.53	95.92	95.01	94.19	93.56	92.49	91.66	91.00	89.93
280.0	96.34	95.50	94.89	94.04	92.96	92.35	91.50	90.47	89.83
290.0	95.44	94.53	93.70	93.16	92.13	91.32	90.80	89.79	89.02
300.0	92.98	92.47	91.81	90.94	90.43	89.77	88.84	88.34	87.59
310.0	90.31	89.83	89.10	88.44	87.95	87.17	86.54	86.00	85.19
320.0	86.68	86.08	85.33	84.91	84.32	83.56	83.13	82.51	81.72
330.0	85.31	84.77	84.08	83.62	83.07	82.37	81.92	81.40	80.69
340.0	86.76	86.34	85.61	85.03	84.68	83.96	83.41	82.93	81.76
350.0	88.46	88.01	87.19	86.54	86.12	84.99	84.46	83.62	82.93
360.0	88.15	87.67	87.04	86.32	85.85	85.27	84.64	84.16	83.35

## Intensity data(cd)

Page: 24 Total:34

C/γ(°)	90.0	91.0	92.0	93.0	94.0	95.0	96.0	97.0	98.0
0.0	82.73	82.28	81.52	80.87	80.31	79.40	78.51	77.79	76.56
10.0	84.06	83.15	82.39	81.88	81.11	80.09	79.38	78.39	77.12
20.0	81.70	81.22	80.41	79.60	78.98	77.83	76.86	76.11	74.72
30.0	78.69	78.23	77.62	76.78	76.23	75.43	74.32	73.61	72.58
40.0	73.81	73.31	72.68	71.77	70.97	70.24	69.15	68.14	67.36
50.0	72.50	71.83	70.87	70.14	69.51	68.65	67.94	66.67	65.58
60.0	74.48	73.67	73.09	72.04	71.07	70.34	68.99	67.92	67.05
70.0	77.38	76.39	75.75	74.86	73.65	73.19	71.85	70.73	69.80
80.0	77.30	76.64	75.73	74.56	73.81	72.74	71.37	70.52	69.27
90.0	77.79	76.66	75.71	74.94	73.65	72.56	71.69	70.22	68.93
100.0	76.78	76.58	75.12	74.09	72.78	71.92	70.75	69.21	68.89
110.0	75.83	75.08	73.89	72.86	72.02	70.73	69.49	68.57	67.34
120.0	74.88	73.93	72.66	71.90	70.85	69.43	68.55	67.38	66.15
130.0	72.10	71.13	69.82	68.73	67.88	66.45	65.26	64.35	62.76
140.0	73.49	72.74	71.77	70.71	69.90	68.53	67.38	66.49	64.98
150.0	70.46	69.01	67.98	66.13	64.65	63.54	62.05	60.17	59.03
160.0	58.44	56.48	53.86	50.71	48.92	46.70	44.56	43.05	40.69
170.0	44.94	40.16	36.51	33.99	30.18	27.45	25.60	22.96	21.18
180.0	44.72	40.39	35.18	32.18	31.27	24.67	22.55	20.07	17.47
190.0	48.96	44.62	39.40	36.41	32.70	28.52	26.37	23.76	20.98
200.0	62.76	60.24	56.14	52.91	50.57	46.82	44.14	41.09	39.44
210.0	75.02	74.11	72.32	70.97	68.69	66.97	65.68	63.97	61.91
220.0	78.77	77.85	76.76	75.45	74.58	73.45	72.32	71.49	70.08
230.0	81.01	79.78	78.77	78.11	77.16	76.05	75.34	74.44	73.27
240.0	82.73	81.42	81.19	80.39	79.80	78.79	77.97	77.36	76.31
250.0	85.01	84.36	83.51	82.45	81.88	81.09	80.07	79.24	78.57
260.0	87.75	86.86	85.73	85.11	84.28	83.23	82.61	81.76	81.13
270.0	89.08	88.40	87.25	86.42	85.81	84.77	83.47	83.25	82.08
280.0	88.94	87.83	87.17	86.30	85.33	84.68	83.82	82.95	82.32
290.0	88.36	87.29	86.42	85.83	84.81	84.04	83.41	82.53	81.38
300.0	86.68	86.08	85.25	84.40	83.86	82.89	82.16	81.54	80.49
310.0	84.56	83.64	83.29	82.37	81.82	81.09	80.19	79.64	78.86
320.0	81.24	80.59	79.70	79.20	78.55	77.70	77.14	76.39	74.96
330.0	80.19	79.56	78.83	77.89	77.70	77.02	76.45	75.45	74.60
340.0	81.30	81.13	80.53	79.80	79.28	78.55	77.60	76.76	76.07
350.0	82.47	81.88	81.05	80.57	79.86	78.92	78.33	77.44	76.74
360.0	82.73	82.28	81.52	80.87	80.31	79.40	78.51	77.79	76.56



Intensity data(cd)										Page: 25 Total:34	
C/γ(°)	99.0	100.0	101.0	102.0	103.0	104.0	105.0	106.0	107.0		
0.0	75.45	74.54	72.90	71.55	70.36	68.87	66.91	65.66	63.91		
10.0	76.31	75.08	73.49	72.80	71.03	69.47	68.24	66.09	64.33		
20.0	73.51	72.50	70.79	69.33	68.22	66.55	64.43	63.10	61.24		
30.0	71.19	70.30	69.98	67.34	66.27	64.77	62.78	61.51	59.83		
40.0	65.98	64.77	63.85	62.17	61.08	59.63	57.69	56.04	54.71		
50.0	64.77	63.26	62.03	60.28	59.21	57.75	56.58	54.55	52.87		
60.0	65.80	64.17	63.16	61.73	60.94	58.58	56.93	54.77	53.40		
70.0	68.55	66.89	65.90	64.45	62.49	61.26	59.61	57.39	56.04		
80.0	67.66	66.61	65.24	63.75	62.56	60.56	58.84	57.51	55.25		
90.0	67.88	66.17	64.73	63.56	61.59	59.93	58.58	56.81	54.49		
100.0	66.93	65.90	64.11	62.58	60.60	59.37	57.65	55.86	54.51		
110.0	65.70	64.65	63.20	61.43	60.30	58.68	56.60	55.35	53.56		
120.0	65.16	63.50	62.13	61.06	59.23	57.73	56.52	54.47	52.75		
130.0	61.45	60.46	58.72	57.63	56.16	54.59	52.59	51.36	49.67		
140.0	63.73	62.72	61.08	59.73	58.64	56.81	55.33	54.14	52.15		
150.0	57.55	55.52	54.37	52.77	50.77	49.60	47.95	45.85	44.60		
160.0	38.95	37.70	35.75	34.25	33.18	31.49	30.14	29.17	27.58		
170.0	20.01	18.66	17.19	16.38	15.41	14.40	13.80	13.07	12.26		
180.0	16.14	14.63	13.39	12.55	11.36	10.51	9.93	9.16	8.57		
190.0	19.63	18.03	16.32	15.43	14.44	13.56	13.01	12.16	11.54		
200.0	37.46	35.67	34.47	32.68	31.69	30.54	29.23	28.46	27.43		
210.0	60.76	59.29	57.37	56.26	54.83	53.05	52.03	50.65	48.82		
220.0	68.95	68.08	66.63	65.40	64.47	62.92	61.59	60.64	58.84		
230.0	72.54	71.59	70.34	69.58	68.51	67.17	66.31	65.12	63.62		
240.0	75.45	74.78	73.63	72.68	71.92	70.62	69.56	68.65	67.13		
250.0	77.40	76.72	75.75	74.46	73.65	72.54	71.33	70.38	68.71		
260.0	79.96	79.02	78.01	77.20	75.77	74.58	73.67	72.02	70.60		
270.0	81.17	80.43	79.40	78.07	77.20	75.97	74.32	73.29	71.88		
280.0	81.15	80.17	79.40	78.03	76.88	75.97	74.34	72.96	71.90		
290.0	80.73	79.76	78.39	77.52	76.37	74.78	73.79	72.46	70.62		
300.0	79.58	78.86	77.60	76.60	75.79	74.26	73.02	72.02	70.28		
310.0	77.93	77.08	76.45	75.32	74.36	73.55	72.20	71.29	70.06		
320.0	73.85	72.86	72.08	70.71	69.52	68.57	66.95	65.58	64.51		
330.0	73.89	72.68	71.63	70.73	69.15	67.86	67.80	66.69	65.24		
340.0	74.84	74.05	72.88	71.29	70.32	68.89	67.01	65.90	64.27		
350.0	75.47	74.30	72.70	71.77	70.38	68.53	67.76	65.68	64.05		
360.0	75.45	74.54	72.90	71.55	70.36	68.87	66.91	65.66	63.91		

## Intensity data(cd)

Page: 26 Total:34

C/γ(°)	108.0	109.0	110.0	111.0	112.0	113.0	114.0	115.0	116.0
0.0	61.61	60.18	58.12	55.31	53.05	47.71	39.18	35.46	32.03
10.0	62.96	60.56	58.58	57.05	54.00	48.98	43.86	35.81	32.90
20.0	58.84	57.35	55.11	49.73	44.68	37.42	33.47	28.91	23.90
30.0	57.96	56.58	53.96	49.08	44.02	37.52	33.16	28.16	24.45
40.0	52.39	50.43	48.84	46.58	43.37	41.21	38.03	35.40	30.64
50.0	51.60	49.46	47.61	46.22	44.32	41.86	41.37	38.39	35.79
60.0	51.58	49.26	47.83	45.89	43.35	41.86	39.88	37.94	36.43
70.0	54.14	51.68	50.23	48.25	45.67	44.12	42.02	39.92	38.39
80.0	53.32	51.82	49.36	47.35	45.81	43.25	41.13	39.56	36.96
90.0	53.07	51.06	48.52	46.98	44.96	42.40	40.83	38.77	36.13
100.0	52.21	50.27	48.76	46.26	44.74	42.71	40.24	38.19	36.69
110.0	51.28	49.85	47.99	46.09	44.60	42.10	40.20	38.71	36.31
120.0	51.44	49.28	47.49	46.11	43.77	41.86	40.43	38.55	36.25
130.0	47.57	46.24	44.48	42.18	40.83	39.01	37.64	35.38	33.55
140.0	50.49	49.22	47.47	45.29	43.94	42.16	39.86	38.51	36.61
150.0	42.89	40.73	39.90	37.66	35.36	33.14	29.21	25.76	22.98
160.0	25.48	23.42	20.43	18.26	15.78	13.48	11.82	11.20	11.34
170.0	11.66	10.69	9.50	8.96	8.31	7.63	7.02	6.43	6.01
180.0	8.13	7.46	6.90	6.50	5.99	5.61	5.35	4.88	4.50
190.0	11.03	10.07	9.32	8.86	8.19	7.67	7.28	6.60	6.15
200.0	25.80	24.05	22.61	20.43	18.94	17.03	14.14	12.87	11.90
210.0	47.49	44.92	40.91	38.67	34.90	29.67	25.78	20.86	18.58
220.0	57.45	56.34	54.51	53.01	51.78	49.93	47.08	45.03	42.06
230.0	62.62	61.26	59.87	58.80	56.99	55.52	54.32	52.41	50.81
240.0	65.84	64.84	63.44	61.65	60.56	59.03	57.07	55.82	54.14
250.0	67.30	65.44	64.33	62.76	61.57	59.57	57.84	56.54	54.30
260.0	69.52	67.64	66.49	64.88	62.82	61.14	59.85	57.53	55.60
270.0	70.04	68.87	67.30	65.26	63.99	62.19	59.95	59.01	56.60
280.0	70.04	68.43	67.26	65.20	63.48	62.13	60.32	57.98	56.52
290.0	69.49	67.96	66.31	65.10	62.92	61.10	59.73	57.39	55.47
300.0	68.85	67.78	66.23	64.21	63.00	61.28	59.07	57.77	55.88
310.0	68.77	67.78	66.01	64.57	62.72	61.47	59.89	57.77	56.42
320.0	62.72	61.16	59.99	57.86	56.14	54.77	52.89	50.45	48.92
330.0	63.40	62.21	60.52	58.50	56.79	53.74	50.69	48.15	43.41
340.0	62.58	60.18	57.94	53.18	48.62	42.18	37.20	32.56	27.25
350.0	62.72	60.36	58.10	56.14	50.90	44.58	40.00	35.08	29.55
360.0	61.61	60.18	58.12	55.31	53.05	47.71	39.18	35.46	32.03

Intensity data(cd)										Page: 27 Total:34
C/γ(°)	117.0	118.0	119.0	120.0	121.0	122.0	123.0	124.0	125.0	
0.0	24.67	22.57	21.24	18.46	20.54	21.56	22.47	22.29	21.00	
10.0	28.44	23.50	21.14	19.14	18.44	21.30	22.15	22.37	21.34	
20.0	21.18	18.88	18.32	20.27	20.84	20.31	19.04	17.93	16.14	
30.0	22.23	20.68	23.08	25.01	25.36	24.75	23.38	22.45	21.16	
40.0	27.01	23.32	21.38	18.90	16.95	16.36	15.75	15.21	14.75	
50.0	34.15	31.89	28.97	27.15	24.57	21.44	19.79	17.77	14.95	
60.0	33.99	32.01	31.75	30.30	28.40	26.06	24.69	22.88	20.56	
70.0	35.87	33.85	32.36	29.90	28.02	26.65	24.43	22.73	21.52	
80.0	34.94	33.45	31.47	29.03	27.60	25.82	23.62	22.39	20.76	
90.0	34.58	32.62	30.22	28.77	26.89	25.07	23.72	21.67	20.09	
100.0	34.15	32.18	30.80	28.46	27.13	25.28	23.56	22.31	20.37	
110.0	34.35	32.84	30.54	28.71	27.41	25.26	23.56	22.37	20.41	
120.0	34.88	33.00	30.74	29.37	27.64	25.58	24.33	22.69	20.78	
130.0	31.23	29.86	28.02	26.18	24.77	22.37	20.37	18.86	16.44	
140.0	34.01	32.32	29.96	26.69	24.57	21.60	18.44	16.84	14.69	
150.0	18.82	16.10	14.34	12.45	11.86	11.70	11.56	11.18	10.85	
160.0	11.92	11.98	11.66	11.16	10.77	10.19	9.42	8.86	8.45	
170.0	6.01	5.91	5.77	5.63	5.37	5.12	4.82	4.20	3.77	
180.0	4.24	4.01	3.79	3.61	3.49	3.31	3.15	2.90	2.36	
190.0	5.99	5.93	5.87	5.79	5.51	5.27	5.08	4.50	3.97	
200.0	13.23	14.48	15.57	15.63	15.13	14.69	14.02	13.05	12.53	
210.0	18.01	18.54	19.73	20.68	21.44	21.26	20.94	20.17	19.51	
220.0	37.86	35.26	31.57	26.59	23.88	21.06	18.70	17.69	16.56	
230.0	49.50	47.26	45.25	43.71	40.73	38.11	36.09	32.52	29.49	
240.0	51.98	50.61	48.76	46.40	44.94	42.95	40.91	39.38	36.65	
250.0	52.43	51.00	49.06	46.62	43.59	43.11	40.57	39.05	37.02	
260.0	54.18	52.21	49.66	48.13	46.07	44.52	41.88	39.88	37.32	
270.0	54.59	53.07	50.51	48.37	46.82	44.18	42.08	40.51	37.92	
280.0	54.55	51.98	50.43	48.35	45.69	44.14	42.02	39.44	37.90	
290.0	53.96	51.44	49.36	47.81	45.25	43.11	41.50	38.95	36.86	
300.0	53.46	51.48	50.03	47.53	46.05	43.98	41.41	40.41	37.78	
310.0	54.65	53.30	50.96	49.06	47.63	45.11	43.09	40.99	39.44	
320.0	46.76	43.84	41.98	39.28	35.52	33.26	30.18	26.14	23.68	
330.0	39.72	36.92	31.81	27.92	25.38	22.53	21.20	20.48	19.43	
340.0	24.03	23.00	26.16	28.63	29.67	29.35	28.44	27.60	26.29	
350.0	25.92	22.19	19.81	20.29	22.33	23.04	22.55	21.30	19.39	
360.0	24.67	22.57	21.24	18.46	20.54	21.56	22.47	22.29	21.00	

## Intensity data(cd)

Page: 28 Total:34

C/γ(°)	126.0	127.0	128.0	129.0	130.0	131.0	132.0	133.0	134.0
0.0	19.83	18.94	17.37	16.14	15.25	13.92	12.99	12.39	11.44
10.0	20.52	19.33	17.83	16.94	15.69	14.32	13.60	12.71	11.90
20.0	14.87	13.96	12.53	11.66	11.12	10.33	9.70	9.12	8.23
30.0	19.53	18.40	17.05	15.67	14.95	13.98	12.55	11.74	10.69
40.0	13.84	13.56	12.93	11.92	11.12	10.59	9.68	9.06	8.61
50.0	13.17	12.16	10.97	10.19	9.12	8.25	7.63	6.96	6.44
60.0	19.29	17.47	15.43	14.65	12.61	11.05	10.07	8.73	7.79
70.0	19.51	18.01	16.92	15.21	13.86	12.95	11.78	10.29	9.50
80.0	18.86	17.75	16.32	14.67	13.78	12.61	11.26	10.53	9.62
90.0	19.00	17.19	15.80	14.77	13.25	12.10	11.30	10.05	9.18
100.0	18.88	17.11	16.12	14.83	13.31	12.47	11.42	10.17	9.54
110.0	18.96	17.91	16.56	14.99	14.12	12.97	11.62	10.87	9.88
120.0	19.65	18.18	17.45	15.63	13.90	12.69	11.74	10.11	8.96
130.0	15.19	13.52	11.46	10.13	8.23	7.50	6.98	6.11	5.79
140.0	12.79	11.78	10.63	9.95	9.48	8.71	7.97	7.58	6.94
150.0	10.55	9.88	9.36	8.80	8.13	7.77	7.36	6.82	6.50
160.0	8.23	8.15	7.85	7.38	7.02	6.39	5.83	5.43	5.24
170.0	3.45	3.25	3.23	3.27	3.15	2.84	2.68	2.42	2.28
180.0	2.04	1.63	1.31	1.31	1.49	1.76	1.69	1.57	1.45
190.0	3.61	3.03	2.80	2.78	2.80	2.80	2.72	2.58	2.36
200.0	11.82	11.38	10.95	10.65	10.45	9.64	9.06	8.47	8.01
210.0	19.06	18.24	17.51	16.90	16.00	14.81	14.12	13.25	12.22
220.0	15.84	15.73	15.88	15.80	15.53	15.11	14.71	14.28	13.52
230.0	26.95	23.62	20.13	18.46	16.60	14.50	13.33	12.14	11.40
240.0	34.43	32.76	29.88	27.35	25.20	21.46	18.76	16.92	14.56
250.0	34.48	32.98	30.92	28.46	26.89	24.69	21.52	18.90	16.95
260.0	35.79	33.77	31.25	29.77	27.72	25.26	23.88	21.85	19.75
270.0	35.81	34.31	31.71	29.61	28.08	26.10	23.80	22.45	20.64
280.0	35.79	33.67	32.09	29.49	27.52	26.06	23.76	22.01	20.70
290.0	35.24	33.12	30.52	28.99	27.01	24.67	23.30	21.42	18.88
300.0	35.64	34.03	31.37	29.23	26.61	25.09	22.88	21.02	17.81
310.0	36.73	34.35	32.54	29.53	27.74	25.12	21.46	19.26	16.58
320.0	20.62	17.71	16.82	14.95	13.48	12.41	11.32	10.93	10.61
330.0	18.68	18.52	18.48	17.95	17.43	16.72	15.78	15.15	14.36
340.0	24.51	23.30	21.67	19.99	20.23	19.28	17.77	16.44	14.77
350.0	18.30	16.90	15.35	14.38	13.31	12.24	11.66	10.97	9.93
360.0	19.83	18.94	17.37	16.14	15.25	13.92	12.99	12.39	11.44

## Intensity data(cd)

Page: 29 Total:34

C/γ(°)	135.0	136.0	137.0	138.0	139.0	140.0	141.0	142.0	143.0
0.0	10.45	9.72	8.82	7.83	7.32	6.66	6.03	5.85	5.53
10.0	11.36	9.86	8.94	8.37	7.48	6.92	6.60	6.19	5.87
20.0	7.56	7.06	6.52	5.95	5.69	5.33	5.02	4.80	4.52
30.0	10.13	8.67	7.81	7.10	6.60	6.03	5.63	5.35	4.98
40.0	7.89	7.44	7.18	6.78	6.54	6.41	6.17	5.73	5.47
50.0	6.03	5.49	5.22	5.12	5.08	4.98	4.90	4.82	4.82
60.0	7.22	6.31	5.57	5.16	4.58	4.18	3.99	3.69	3.59
70.0	8.53	7.54	7.02	6.41	5.53	4.94	4.30	3.67	3.33
80.0	8.76	8.15	7.38	6.90	6.48	5.79	5.06	4.44	3.67
90.0	8.59	7.87	7.22	6.90	6.52	5.95	5.53	4.84	3.91
100.0	8.75	8.19	7.40	6.96	6.50	6.15	5.41	4.64	4.09
110.0	8.76	8.13	7.44	6.70	6.25	5.63	4.66	4.30	3.61
120.0	8.25	7.30	6.58	6.11	5.27	4.64	4.22	3.71	3.35
130.0	5.24	4.84	4.50	4.32	4.18	4.10	4.05	3.97	3.95
140.0	6.33	5.95	5.47	5.22	5.14	5.08	4.96	4.92	4.90
150.0	6.15	5.73	5.45	5.16	4.96	4.90	4.54	4.28	4.10
160.0	4.50	4.24	3.85	3.55	3.37	3.15	2.95	2.82	2.62
170.0	1.96	1.84	1.67	1.61	1.53	1.41	1.37	1.31	1.21
180.0	1.29	1.09	0.95	0.91	0.87	0.87	0.81	0.83	0.77
190.0	2.26	2.12	1.96	1.88	1.84	1.75	1.69	1.67	1.61
200.0	7.28	6.72	6.39	5.73	5.33	5.06	4.60	4.28	4.24
210.0	11.52	10.73	9.86	9.30	8.65	7.79	7.30	6.72	6.23
220.0	12.87	12.29	11.36	10.63	10.03	9.10	8.47	8.07	7.61
230.0	11.10	10.65	10.07	9.78	9.34	8.76	8.55	8.09	7.65
240.0	12.83	11.48	9.44	8.43	7.89	7.30	6.66	6.31	5.87
250.0	14.56	12.61	11.46	9.82	8.51	6.90	6.07	5.26	4.80
260.0	18.14	15.05	12.85	11.94	10.31	8.73	7.44	5.91	5.04
270.0	18.34	16.84	14.34	11.90	11.12	9.97	7.99	6.76	5.63
280.0	18.44	16.42	14.44	11.92	10.95	10.09	8.13	6.54	5.71
290.0	17.19	14.54	12.24	11.42	10.21	8.19	6.98	5.89	5.08
300.0	15.11	13.60	12.02	10.67	8.96	7.77	6.50	5.79	5.33
310.0	14.18	12.75	11.62	9.50	8.29	7.77	7.28	6.64	6.31
320.0	9.90	9.34	8.94	8.39	8.05	7.83	7.14	7.08	6.78
330.0	13.37	12.73	11.88	10.79	9.60	9.44	8.69	8.39	7.73
340.0	13.82	12.69	11.36	10.59	9.64	9.00	8.25	7.36	6.78
350.0	9.36	8.65	7.97	7.48	6.78	6.29	5.99	5.51	5.24
360.0	10.45	9.72	8.82	7.83	7.32	6.66	6.03	5.85	5.53

## Intensity data(cd)

Page: 30 Total:34

C/γ(°)	144.0	145.0	146.0	147.0	148.0	149.0	150.0	151.0	152.0
0.0	5.18	5.00	4.72	4.38	4.18	3.95	3.73	3.59	3.33
10.0	5.63	5.26	5.00	4.80	4.50	4.28	4.09	3.85	3.57
20.0	4.22	4.03	3.83	3.59	3.45	3.31	3.15	3.05	2.88
30.0	4.66	4.44	4.16	3.95	3.73	3.47	3.25	3.05	2.80
40.0	5.10	4.64	4.42	4.09	3.69	3.47	3.21	2.88	2.72
50.0	4.80	4.78	4.66	4.60	4.40	4.22	3.91	3.51	3.27
60.0	3.55	3.47	3.41	3.43	3.45	3.41	3.39	3.37	3.13
70.0	3.01	2.76	2.66	2.56	2.54	2.50	2.54	2.54	2.52
80.0	3.13	2.78	2.36	2.16	2.04	1.98	1.92	1.90	1.94
90.0	3.43	2.90	2.30	2.04	1.84	1.67	1.59	1.47	1.43
100.0	3.27	2.90	2.46	2.02	1.82	1.80	1.65	1.51	1.51
110.0	3.09	2.78	2.42	2.22	2.08	2.04	1.94	1.92	1.88
120.0	3.17	2.93	2.92	2.82	2.78	2.82	2.84	2.78	2.72
130.0	3.95	3.91	3.83	3.77	3.63	3.29	3.07	2.62	2.30
140.0	4.78	4.68	4.60	4.44	4.18	3.99	3.67	3.41	3.17
150.0	3.81	3.59	3.45	3.19	2.99	2.86	2.60	2.40	2.26
160.0	2.46	2.34	2.22	2.04	1.94	1.80	1.69	1.53	1.41
170.0	1.19	1.11	1.03	0.97	0.95	0.91	0.87	0.85	0.83
180.0	0.77	0.75	0.75	0.69	0.75	0.71	0.69	0.69	0.69
190.0	1.59	1.53	1.45	1.45	1.39	1.35	1.29	1.31	1.27
200.0	4.07	3.65	3.51	3.37	3.19	2.99	2.88	2.66	2.48
210.0	5.95	5.65	5.33	5.14	4.80	4.52	4.30	4.01	3.75
220.0	7.22	7.06	6.82	6.52	6.29	5.93	5.49	5.26	4.96
230.0	7.36	6.98	6.66	6.41	6.13	5.93	5.75	5.57	5.43
240.0	5.49	5.37	5.43	5.41	5.33	5.24	4.92	4.76	4.66
250.0	4.30	4.10	4.03	4.09	4.14	4.10	4.01	3.87	3.63
260.0	4.56	3.87	3.53	3.39	3.35	3.39	3.41	3.37	3.15
270.0	4.62	4.10	3.57	3.21	3.01	2.93	2.99	3.03	2.95
280.0	4.88	4.05	3.67	3.27	2.93	2.92	3.01	3.03	2.97
290.0	4.60	3.91	3.53	3.37	3.33	3.53	3.63	3.61	3.47
300.0	4.58	4.26	4.03	4.03	4.18	4.28	4.28	4.14	3.97
310.0	5.81	5.35	5.22	5.27	5.27	5.26	5.10	4.82	4.64
320.0	6.44	6.13	5.99	5.81	5.59	5.45	5.33	5.10	4.86
330.0	7.34	7.12	6.78	6.41	6.11	5.67	5.31	4.88	4.64
340.0	6.44	5.93	5.51	5.27	4.90	4.56	4.36	4.03	3.85
350.0	5.02	4.70	4.44	4.26	3.97	3.73	3.59	3.33	3.13
360.0	5.18	5.00	4.72	4.38	4.18	3.95	3.73	3.59	3.33

Intensity data(cd)										Page: 31 Total:34	
C/γ(°)	153.0	154.0	155.0	156.0	157.0	158.0	159.0	160.0	161.0		
0.0	3.15	3.03	2.74	2.50	2.32	2.06	1.86	1.73	1.49		
10.0	3.41	3.15	2.86	2.66	2.38	2.12	1.94	1.76	1.55		
20.0	2.70	2.58	2.28	2.08	1.92	1.71	1.55	1.47	1.29		
30.0	2.56	2.38	2.12	1.90	1.75	1.57	1.39	1.27	1.13		
40.0	2.46	2.14	2.02	1.75	1.53	1.39	1.17	1.01	0.89		
50.0	2.95	2.74	2.34	2.10	1.90	1.61	1.33	1.19	1.07		
60.0	2.95	2.66	2.30	2.12	1.90	1.59	1.45	1.21	0.95		
70.0	2.56	2.46	2.28	2.00	1.76	1.59	1.35	1.13	0.93		
80.0	1.94	1.96	1.98	1.82	1.67	1.43	1.25	1.09	0.89		
90.0	1.45	1.49	1.51	1.51	1.35	1.21	1.11	0.95	0.79		
100.0	1.49	1.51	1.55	1.47	1.35	1.17	1.03	0.81	0.77		
110.0	1.80	1.80	1.76	1.59	1.47	1.31	1.09	0.93	0.85		
120.0	2.66	2.46	2.14	1.92	1.69	1.43	1.27	1.09	0.89		
130.0	2.08	1.76	1.53	1.39	1.15	0.95	0.83	0.69	0.67		
140.0	2.80	2.54	2.26	1.98	1.80	1.53	1.35	1.11	0.97		
150.0	1.98	1.76	1.63	1.41	1.25	1.15	1.01	0.87	0.85		
160.0	1.29	1.15	1.07	0.97	0.87	0.81	0.77	0.77	0.77		
170.0	0.77	0.79	0.77	0.73	0.73	0.73	0.77	0.83	0.85		
180.0	0.69	0.69	0.69	0.71	0.71	0.71	0.71	0.73	0.81		
190.0	1.21	1.23	1.19	1.17	1.13	1.09	1.11	1.05	1.05		
200.0	2.38	2.20	2.04	1.96	1.78	1.65	1.57	1.45	1.37		
210.0	3.57	3.29	3.05	2.90	2.62	2.36	2.18	1.94	1.78		
220.0	4.52	4.32	4.01	3.61	3.39	3.07	2.76	2.54	2.18		
230.0	5.29	4.96	4.66	4.42	4.12	3.71	3.45	3.09	2.68		
240.0	4.52	4.46	4.40	4.34	4.18	3.79	3.47	3.21	2.78		
250.0	3.49	3.43	3.37	3.33	3.29	2.95	2.76	2.56	2.30		
260.0	3.01	2.86	2.78	2.78	2.78	2.70	2.54	2.28	2.02		
270.0	2.80	2.68	2.58	2.56	2.60	2.60	2.48	2.30	2.02		
280.0	2.86	2.60	2.58	2.60	2.54	2.60	2.56	2.34	2.20		
290.0	3.33	3.21	3.19	3.19	3.21	3.17	3.01	2.68	2.44		
300.0	3.83	3.81	3.77	3.73	3.75	3.65	3.37	3.13	2.78		
310.0	4.54	4.44	4.36	4.32	4.26	4.12	3.79	3.51	3.25		
320.0	4.56	4.18	3.95	3.65	3.29	3.03	2.76	2.46	2.26		
330.0	4.32	4.09	3.71	3.43	3.21	2.95	2.60	2.40	2.16		
340.0	3.61	3.31	3.09	2.92	2.68	2.38	2.22	2.02	1.76		
350.0	3.05	2.84	2.60	2.82	2.62	2.48	2.18	1.98	1.88		
360.0	3.15	3.03	2.74	2.50	2.32	2.06	1.86	1.73	1.49		

## Intensity data(cd)

Page: 32 Total:34

C/γ(°)	162.0	163.0	164.0	165.0	166.0	167.0	168.0	169.0	170.0
0.0	1.33	1.25	1.05	0.89	0.85	0.77	0.77	0.75	0.77
10.0	1.43	1.25	1.03	0.93	0.77	0.73	0.75	0.71	0.71
20.0	1.11	0.95	0.75	0.73	0.75	0.75	0.73	0.77	0.77
30.0	1.01	0.87	0.79	0.71	0.73	0.73	0.75	0.73	0.73
40.0	0.77	0.73	0.73	0.73	0.75	0.73	0.79	0.71	0.73
50.0	0.85	0.75	0.73	0.73	0.73	0.73	0.71	0.73	0.75
60.0	0.83	0.71	0.73	0.75	0.73	0.73	0.71	0.73	0.73
70.0	0.75	0.73	0.71	0.69	0.71	0.69	0.71	0.71	0.71
80.0	0.71	0.69	0.69	0.69	0.65	0.69	0.69	0.69	0.69
90.0	0.67	0.67	0.67	0.65	0.67	0.71	0.67	0.67	0.69
100.0	0.69	0.65	0.67	0.65	0.67	0.69	0.69	0.69	0.69
110.0	0.71	0.67	0.67	0.67	0.65	0.69	0.67	0.69	0.69
120.0	0.75	0.69	0.67	0.67	0.69	0.69	0.69	0.71	0.69
130.0	0.69	0.69	0.67	0.71	0.71	0.71	0.73	0.71	0.69
140.0	0.83	0.77	0.71	0.69	0.69	0.69	0.69	0.67	0.69
150.0	0.77	0.69	0.71	0.71	0.69	0.73	0.73	0.71	0.73
160.0	0.79	0.75	0.73	0.71	0.69	0.71	0.69	0.69	0.73
170.0	0.81	0.73	0.71	0.69	0.69	0.69	0.69	0.69	0.71
180.0	0.83	0.89	0.87	0.83	0.73	0.69	0.71	0.67	0.69
190.0	1.01	1.03	1.03	0.93	0.85	0.81	0.77	0.79	0.79
200.0	1.35	1.27	1.23	1.13	1.01	0.89	0.81	0.79	0.77
210.0	1.69	1.53	1.31	1.17	1.03	0.93	0.83	0.81	0.79
220.0	1.94	1.76	1.55	1.37	1.25	1.01	0.89	0.81	0.79
230.0	2.46	2.18	1.88	1.73	1.53	1.11	0.93	0.77	0.77
240.0	2.48	2.14	1.96	1.73	1.59	1.35	1.17	0.99	0.85
250.0	1.96	1.84	1.65	1.39	1.21	1.11	0.97	0.81	0.77
260.0	1.88	1.71	1.47	1.41	1.23	1.09	0.99	0.83	0.73
270.0	1.86	1.71	1.53	1.35	1.25	1.11	0.93	0.83	0.75
280.0	1.92	1.75	1.61	1.43	1.29	1.21	1.01	0.87	0.79
290.0	2.18	1.88	1.73	1.55	1.35	1.25	1.05	0.85	0.77
300.0	2.48	2.16	2.02	1.80	1.53	1.37	1.17	1.03	0.85
310.0	2.90	2.62	2.40	2.08	1.90	1.69	1.45	1.31	1.13
320.0	1.94	1.71	1.57	1.33	1.17	1.05	0.87	0.75	0.77
330.0	1.88	1.69	1.55	1.33	1.21	1.03	0.87	0.81	0.79
340.0	1.63	1.47	1.35	1.13	0.97	0.85	0.79	0.75	0.77
350.0	1.63	1.49	1.37	1.17	1.05	0.95	0.83	0.77	0.75
360.0	1.33	1.25	1.05	0.89	0.85	0.77	0.77	0.75	0.77



## Intensity data(cd)

Page: 33 Total:34

C/γ(°)	171.0	172.0	173.0	174.0	175.0	176.0	177.0	178.0	179.0
0.0	0.73	0.73	0.75	0.75	0.77	0.77	0.77	0.75	0.75
10.0	0.75	0.75	0.75	0.77	0.77	0.79	0.79	0.79	0.79
20.0	0.77	0.79	0.79	0.79	0.81	0.81	0.81	0.81	0.83
30.0	0.75	0.75	0.75	0.75	0.77	0.77	0.77	0.79	0.77
40.0	0.75	0.73	0.75	0.77	0.75	0.77	0.79	0.77	0.79
50.0	0.71	0.75	0.75	0.75	0.75	0.75	0.77	0.77	0.75
60.0	0.71	0.73	0.71	0.75	0.75	0.77	0.77	0.77	0.73
70.0	0.71	0.75	0.73	0.73	0.77	0.77	0.73	0.77	0.73
80.0	0.73	0.71	0.73	0.73	0.73	0.73	0.73	0.73	0.75
90.0	0.69	0.73	0.71	0.69	0.71	0.75	0.73	0.73	0.73
100.0	0.69	0.73	0.71	0.73	0.73	0.75	0.75	0.75	0.75
110.0	0.69	0.69	0.73	0.71	0.69	0.73	0.73	0.71	0.75
120.0	0.69	0.71	0.73	0.75	0.75	0.73	0.73	0.77	0.75
130.0	0.71	0.73	0.73	0.75	0.75	0.75	0.71	0.75	0.75
140.0	0.73	0.71	0.71	0.73	0.73	0.71	0.73	0.73	0.73
150.0	0.73	0.75	0.75	0.75	0.75	0.75	0.75	0.75	0.73
160.0	0.71	0.73	0.73	0.75	0.73	0.73	0.77	0.75	0.77
170.0	0.69	0.73	0.73	0.73	0.75	0.77	0.75	0.73	0.77
180.0	0.71	0.71	0.71	0.73	0.73	0.73	0.75	0.73	0.75
190.0	0.79	0.79	0.81	0.81	0.79	0.85	0.79	0.77	0.81
200.0	0.79	0.79	0.79	0.81	0.81	0.81	0.81	0.83	0.83
210.0	0.79	0.81	0.81	0.81	0.81	0.81	0.81	0.79	0.81
220.0	0.77	0.79	0.79	0.81	0.77	0.81	0.81	0.81	0.79
230.0	0.75	0.75	0.79	0.77	0.77	0.79	0.77	0.75	0.77
240.0	0.75	0.75	0.75	0.77	0.77	0.75	0.77	0.77	0.75
250.0	0.75	0.71	0.73	0.75	0.73	0.75	0.77	0.75	0.75
260.0	0.73	0.75	0.75	0.75	0.73	0.73	0.75	0.75	0.75
270.0	0.75	0.73	0.73	0.75	0.75	0.75	0.75	0.75	0.73
280.0	0.77	0.77	0.75	0.77	0.79	0.77	0.77	0.77	0.75
290.0	0.75	0.75	0.75	0.77	0.77	0.75	0.77	0.77	0.73
300.0	0.79	0.77	0.77	0.77	0.79	0.77	0.75	0.77	0.75
310.0	0.89	0.83	0.77	0.75	0.75	0.75	0.75	0.75	0.75
320.0	0.77	0.77	0.77	0.75	0.75	0.75	0.75	0.75	0.73
330.0	0.77	0.81	0.79	0.79	0.79	0.79	0.79	0.79	0.79
340.0	0.79	0.79	0.79	0.79	0.75	0.77	0.79	0.77	0.75
350.0	0.77	0.77	0.77	0.77	0.79	0.79	0.79	0.79	0.79
360.0	0.73	0.73	0.75	0.75	0.77	0.77	0.77	0.75	0.75

## Intensity data(cd)

Page: 34 Total:34

C/ $\gamma(^{\circ})$	180.0
0.0	0.75
10.0	0.81
20.0	0.81
30.0	0.79
40.0	0.81
50.0	0.75
60.0	0.77
70.0	0.77
80.0	0.73
90.0	0.73
100.0	0.77
110.0	0.77
120.0	0.73
130.0	0.75
140.0	0.73
150.0	0.77
160.0	0.75
170.0	0.77
180.0	0.75
190.0	0.81
200.0	0.81
210.0	0.79
220.0	0.81
230.0	0.75
240.0	0.77
250.0	0.77
260.0	0.73
270.0	0.73
280.0	0.77
290.0	0.77
300.0	0.73
310.0	0.75
320.0	0.73
330.0	0.77
340.0	0.75
350.0	0.77
360.0	0.75