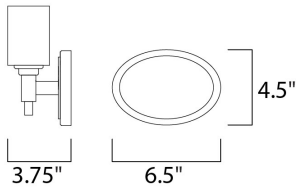
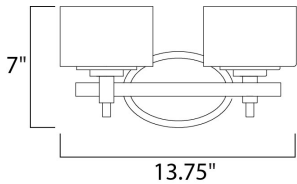


PRODUCT DESCRIPTION

The soft round curves of this design are evident in every detail. The use of xenon allows for a profile that is delicate in scale. The Lola collection is available in Polished Nickel finish with Satin White glass or Oil Rubbed Bronze finish with Dusty White glass.



MEASUREMENTS

DIMENSION : 13.75" W x 7" H x 3.75" Ext
 BACK PLATE : 6.54" W x 4.5" H x 5" HCO
 HANGING WEIGHT : 3.96 lb

LAMPING

INPUT VOLTAGE : 120V
 LUMENS : 1,600 Rated
 BULB : 2 x 40W Xenon G9 , 80W Total
 BULB INCLUDED : (Included)
 DIMMABLE : Yes
 COLOR_TEMP : 2900K

FINISHES OPTION

 Polished Nickel (PN)

GLASS

Satin White SW

MATERIAL

Steel, Glass

RATINGS

cETLus
 Damp Location
 ADA



ADDITIONAL

INSTALL UP/DOWN: Up
 RATED LIFE 2000 Hours
 OPERATING TEMPERATURE:
 -20°C (-4°F), 40°C (104°F)

Always consult a qualified electrician before installing any lighting product.



WESTERN DISTRIBUTION CENTER (HEADQUARTER)
 253 NORTH VINELAND AVE | CITY OF INDUSTRY, CA 91746

EASTERN DISTRIBUTION CENTER
 101 GARDNER PARK | PEACHTREE CITY, GA 30269

P. 626.956.4200 | F. 626.956.4225 | maximlighting.com