



Bath Vanity Lighting





Satin Nickel
Antique Nickel
Brushed Aluminum
Stainless

ANGLE



Rectangular metal tubing mitered to a perfect angle lends a sharp, clean, contemporary look. This collection utilizes xenon lamps for ultimate light output while maintaining a petite scale and low profile. Available in choice of Satin Nickel finish with Satin White glass or Oil Rubbed Bronze finish with Dusty White glass.

1-Light (9031) • 2-Light (9032) • 3-Light (9033) • 4-Light (9034)

ESSENCE



Oval, tubular arms transition to sculptured round fonts on this contemporary collection. The oval-shaped glass squares off on the ends and allows for a low profile on the wall, while the xenon lamps shed a nice, natural light. Available in choice of Satin Nickel finish with Satin White glass or Oil Rubbed Bronze and Dusty White glass.

1-Light (9001) • 2-Light (9002) • 3-Light (9003) • 4-Light (9004)

CONICAL



Satin White cone-shaped glass is supported by a sweeping rectangular tube arm finished in either Satin Nickel or Oil Rubbed Bronze. This interesting marriage between contemporary geometric shape and traditional styling is a unique addition to any bathroom.

1-Light (9011) • 2-Light (9012) • 3-Light (9013) • 4-Light (9014)

AURORA



Straight lines and curves make this contemporary series a classic. Square metal tubing finished in choice of Oil Rubbed Bronze or Satin Nickel support tapered square Frosted glass shades.

1-Light (20098) • 2-Light (20099) • 3-Light (20100) • 4-Light (20101)



Oil Rubbed Bronze
Antique Bronze
Wrought Iron

LOLA



The soft round curves of this design are evident in every detail. The use of xenon allows for a profile that is delicate in scale. Available in Polished Nickel finish with Satin White glass or Oil Rubbed Bronze finish with Dusty White glass.

1-Light (9021) • 2-Light (9022) • 3-Light (9023) • 4-Light (9024)

ELLE



Symmetry in design captures the essence of this collection. Graceful sweeping arms finished in either Polished Chrome or Oil-Rubbed Bronze support a bold Frosted glass. Xenon lamps supply a bright, natural light.

1-Light (19051) • 2-Light (19052) • 3-Light (19053) • 4-Light (19054)

CYLINDER



This classic bath collection, features cylindrical Satin White glass shades supported on stepped round cups mounted to an oval shaped frame finished in your choice of Satin Nickel or Oil Rubbed Bronze.

1-Light (9051) • 2-Light (9052) • 3-Light (9053) • 4-Light (9054)

OAK HARBOR



Tapered metal ribbons forged into a flowing form and finished in a heavy textured Rustic Burnished finish. The beveled soft square Frost Lichen shades enhance this bold and masculine look.

1-Light (21063) • 2-Light (21072) • 3-Light (21073) • 4-Light (21074)



Polished Chrome
Polished Silver
Polished Nickel

S I L O



This collection makes artful use of thin-profile rectangular tubing with a mirror-like Polished Chrome finish for a clean, contemporary look. A subtle Frost on the underside of the two cylindrical glass shades adds softness to the sleek lines, while the bright xenon lamps are cleverly concealed in the cast metal ring allowing ample light to cast both upwards and downwards without glare.

1-Light (23071) • 2-Light (23072) • 3-Light (23073) • 4-Light (23074) • 6-Light (23076)

R O N D O



Cool, clean and contemporary are just a few words to describe this collection. Rectangular arms are bent to form graceful curves and are finished in Polished Nickel. The sharpness of the frame is softened with the use of round crystal glass balls. The White fabric shades are fit with white diffusers that evenly light the room.

1-Light (12761) • 2-Light (12762) • 3-Light (12763) • 4-Light (12764)

C U B I C



Bold Clear crystal cubes are mounted on a solid metal frame finished in a mirror-like Polished Chrome. The inside of the crystal cubes are frosted to nicely diffuse the natural light created from the xenon bulbs.

1-Light (10001) • 2-Light (10002) • 3-Light (10003) • 4-Light (10004)

F A C E T S



This striking vanity collection features Beveled Crystal rods suspended from a Polished Chrome frame. The crystals alternate between two rows creating a unique visual effect. The xenon lamps add sparkle to each fixture.

1-Light (39911) • 2-Light (39912) • 3-Light (39913) • 4-Light (39914)



ENERGY EFFICIENT LIGHTING

MALIBU EE



This energy efficient collection is finished in choice of Satin Nickel or Oil Rubbed Bronze completed with Marble glass. Fixtures include energy efficient, long lasting and low maintenance compact fluorescent bulbs, with select fixtures being Energy Star certified.

1-Light (82686) • 2-Light (82687) • 3-Light (82688) • 4-Light (82689)

BASIX EE



This contemporary energy efficient bath collection features sweeping arms and clean lines. Offered in choice of Ice glass with Satin Nickel finish or Wilshire glass with Oil Rubbed Bronze finish. Fixtures include energy efficient, long lasting and low maintenance compact fluorescent bulbs, with select fixtures being Energy Star certified.

1-Light (85131) • 2-Light (85132) • 3-Light (85133) • 4-Light (85134)

LINDA EE



This beautiful transitional, energy efficient collection features long flowing arms. The warm Wilshire glass perfectly complements the Oil Rubbed Bronze finish. Fixtures include energy efficient, long lasting and low maintenance compact fluorescent bulbs, with select fixtures being Energy Star certified.

1-Light (85807) • 2-Light (85808) • 3-Light (85809) • 4-Light (85810)

AURORA EE



Straight lines and curves make this energy efficient collection a classic. Square metal tubing finished in Satin Nickel support tapered square Frost glass shades. Fixtures include energy efficient, long lasting and low maintenance compact fluorescent bulbs.

1-Light (83098) • 2-Light (83099) • 3-Light (83100)

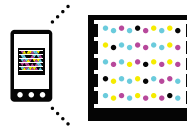


For over 40 years, Maxim Lighting has defined lifestyle lighting, offering a variety of high-quality, decorative fixtures for the home, including chandeliers, sconces, pendants, ceiling mounts and bath vanities. Design inspiration from around the world characterizes our collections from the traditional to the unusual. Our exclusive products complement your distinct sense of style and add a touch of flair to every setting. Whether it's an elegant chandelier to complete your dining room or a set of beautiful pendants to enhance your kitchen, you're certain to discover just the right product at Maxim Lighting.



Maxim Lighting International, Inc.
253 North Vineland Avenue
City of Industry, California 91706 USA

General Info: 626.956.4200
Customer Service: 800.486.2947
Fax: 626.956.4228



Maxim Lighting's Web Site is your resource for detailed product information, including specification data, spec sheets, and high resolution images with detailed zoom features. Visit www.maximlighting.com today!

Maxim Lighting is a registered trademark of Maxim Lighting International, Inc. Maxim Lighting and all designs, logos, products and images © 2011 Maxim Lighting International, Inc. All Rights Reserved. Printed in China. LMXBRO1109 1109.

Your Maxim Lighting Authorized Dealer: