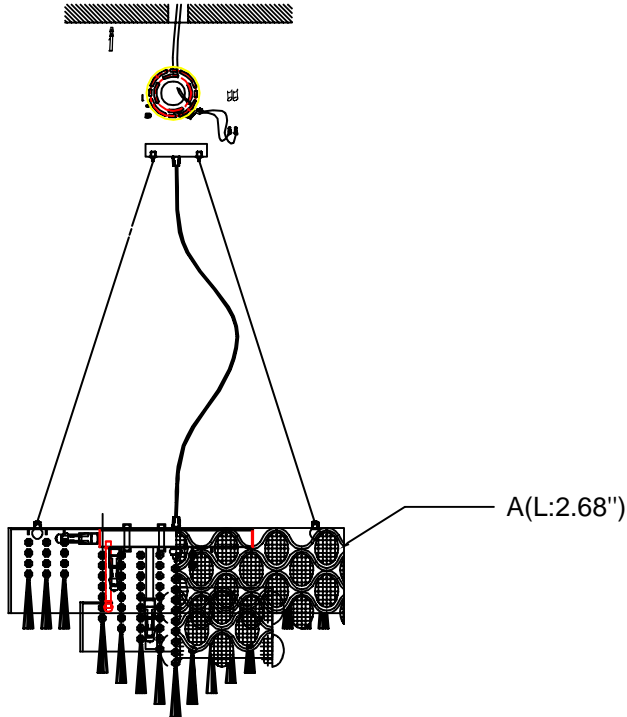




Installation Instructions Model 39929BCPC



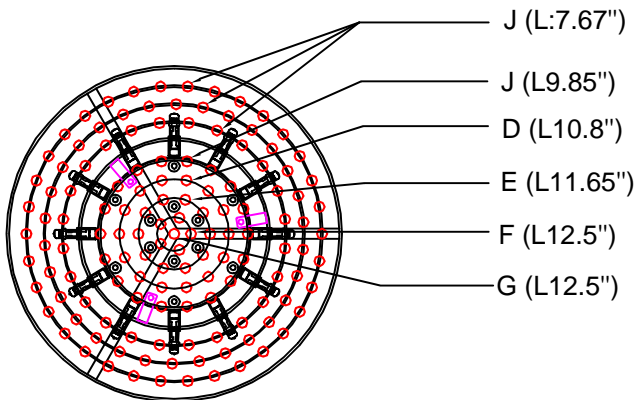
IMPORTANT SAFETY INFORMATION

WARNING Before starting the installation, disconnect the power by turning off the circuit breaker or removing the fuse at the fuse box.

Proper wiring is essential for the safe operation of this fixture. All electrical connections must be in accordance with local codes, ordinances or the National Electrical Code. If you are unfamiliar with methods of installing electrical wiring, secure the services of a qualified licensed electrician.

Fixture must be grounded to avoid potential electrical shocks.

This fixture is designed for use in 120 volt, 60hz, fused circuits.



1. Turn breaker off for circuit on outlet where fixture is to be installed.
2. Remove mounting bracket from fixture and install to electrical box.
3. Measure distance from ceiling that fixture is to hang. Crystal hangs approximately 5" below metal frame.
4. Adjust support cables accordingly by pushing spring loaded pin and pushing cable through. When pin is release it will lock onto cable. Extra cable can be cut but leave at least 10" extra. Reattach safety stops to end of cable.
5. Wire fixture to wires in outlet box. Green wire is for Ground.
6. Install fixture to bracket and tighten 2 nuts so that fixture meets the ceiling.
7. Level fixture by adjusting 4 cables. Attach power wire to cable using clips supplied.
8. Install inner crystal strings(B,C,D,E,F,G)to metal loops on bottom of pan per diagram below.It is recomended to use glove included and not touch crystal with bare fingers.
9. Install crystals A to outer ring into holes supplied and bend pins down
10. Install 25 watt G9 xenon bulbs by gently pushing into socket.

(Caution: Xenon bulbs get very hot and may burn you. Always make sure bulbs are off for a minimum 10 minutes before handling)

CRY Code	Maxim CRY #
A	CJE39920A
C	CJE39920C
D	CJE39920D
E	CJE39920E
F & G	CJE39920F
J	CJE39920J