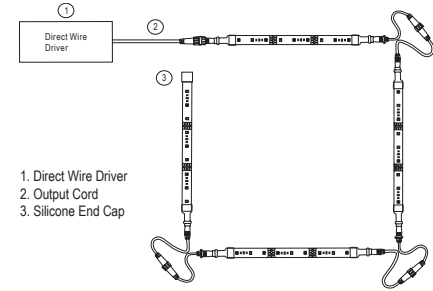


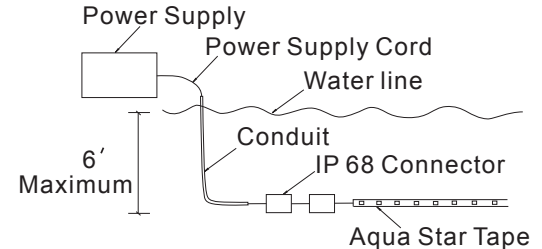


1. StarStrand Aqua Star 24 LED Tape comes with water proof connectors on end of each section. Each connection should have silicone added to the threads of the connector to keep connection secure.
2. Do not exceed maximum runs listed on MAXIMUM RUN CHART. Connecting cords may be used between sections of StarStrand Aqua Star 24 LED Tape when necessary. The length of the connecting cord does not affect maximum run. Maximum run distances listed are the length of StarStrand Aqua Star 24 LED Tape only. Do not exceed distance of 12' between two sections of StarStrand Aqua Star 24 LED Tape.
3. StarStrand Aqua Star LED Tape is NOT supplied with an adhesive backing. It will be necessary to use mounting clips, an aluminum channel or a 45° angle aluminum channel to secure StarStrand Aqua Star 24 LED Tape. All mounting hardware is sold separately. If using a mounting channel, industrial grade silicone must be used to secure tape into channel. *Please see illustrations on the reverse side for proper installation methods.*
4. All end terminations must be capped. StarStrand Aqua Star 24 LED Tape comes with a screw cap to seal end connector. StarStrand Aqua Star 24 LED Tape can be cut every 4". If tape is cut or if end connector is cut off for any reason, an end cap with silicone must be used. Silicone must be added to inside of end cap prior to installing and wipe off any excess silicone. Allow silicone to dry 24 hours prior to using StarStrand Aqua Star 24 LED Tape for first time.
5. Weatherproof drivers are waterproof however cannot be submersed into water. We recommend installing these drivers in a dry location or waterproof connection box. Drivers can be remote from tape. Use 48" 24V Outdoor Connection Cord and 144" 24V Outdoor Connection Cord to remote driver. It is not recommended to exceed 24' between driver and StarStrand Aqua Star 24 LED Tape. All connecting cords are sold separately.

### Sample Layout

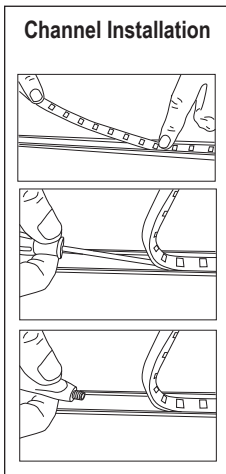


### Under Water Installation




**Maximum Run & Warranty**
**53441/E53441, 53442/E53442, 53443/E53443, 53445/E53445 | StarStrand Aqua Star 24**
**MAXIMUM RUN CHART**

Series	Using Driver/Controller	Maximum Run
Aqua Star 24	60w Driver	21 Feet
	96w Driver	33 Feet
	150w Driver	50 Feet

**Channel Installation**

**5 YEAR LIMITED WARRANTY**

StarStrand™ LED Tape Lighting System components will be warranted for normal use for 5 years while the original purchaser owns it. Normal use means residential non-commercial use for no more than 6 hours per day.

Maxim Lighting and/or ET2 Contemporary Lighting will, at its election, repair, replace or make appropriate adjustment where Maxim Lighting and/or ET2 Contemporary Lighting inspection discloses any such defects occurring in normal usage within five (5) years after date of shipment. Maxim Lighting and/or ET2 Contemporary Lighting is not responsible for removal or installation costs. This warranty is limited to the repair or replacement of the product only and that Maxim Lighting and/or ET2 Contemporary Lighting is not responsible for any labor incurred. Use of incorrect installation methods will void the warranty.

To obtain warranty service contact Maxim Lighting and/or ET2 Contemporary Lighting either through your Dealer, Contractor or E-tailer, or by writing Maxim Lighting International, Attn: Customer Service Department, 253 North Vineland Avenue, City of Industry, CA 95746, USA, or by calling 1-800-486-2946 from within the USA and 1-626-956-4200 outside of the USA.

**DISCLAIMER OF IMPLIED WARRANTY**

IMPLIED WARRANTIES INCLUDING THAT OF MERCHANTABILITY AND FITNESS FOR A PARTICULAR PURPOSE ARE EXPRESSLY LIMITED IN DURATION TO THE DURATION OF THIS WARRANTY. MAXIM LIGHTING AND/OR ET2 CONTEMPORARY LIGHTING AND/OR SELLER DISCLAIMS ANY LIABILITY FOR SPECIAL, INCIDENTAL OR CONSEQUENTIAL DAMAGES.

Some states/provinces do not allow limitations on how long an implied warranty lasts, or the exclusion or limitation of special, incidental or consequential damages, so these limitations and exclusions may not apply to you. This warranty gives you specific legal rights. You may also have other rights which vary from state/province to state/province.



Maxim Lighting is a registered trademark and StarStrand and ET2 Contemporary Lighting are trademarks of Maxim Lighting International, Inc. All products, images, designs and logos are © 2012 Maxim Lighting International, Inc. All Rights Reserved.

**For more information or customer service call  
(800) 486-2946, visit [maximlighting.com](http://maximlighting.com) or [et2online.com](http://et2online.com)**