

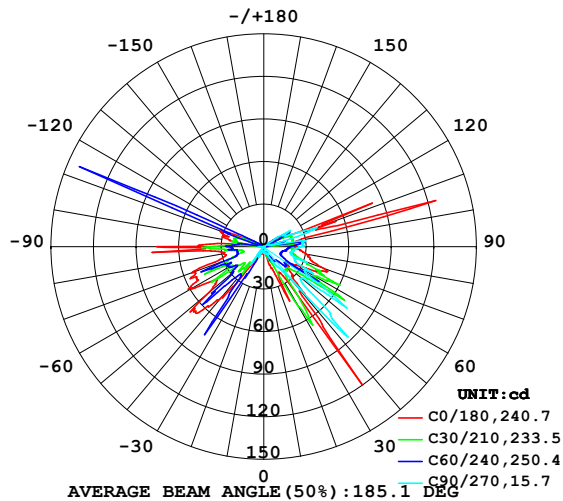
EVERFINE GONIOPHOTOMETERS SYSTEM TEST REPORT

LUMINAIRE PHOTOMETRIC TEST REPORT

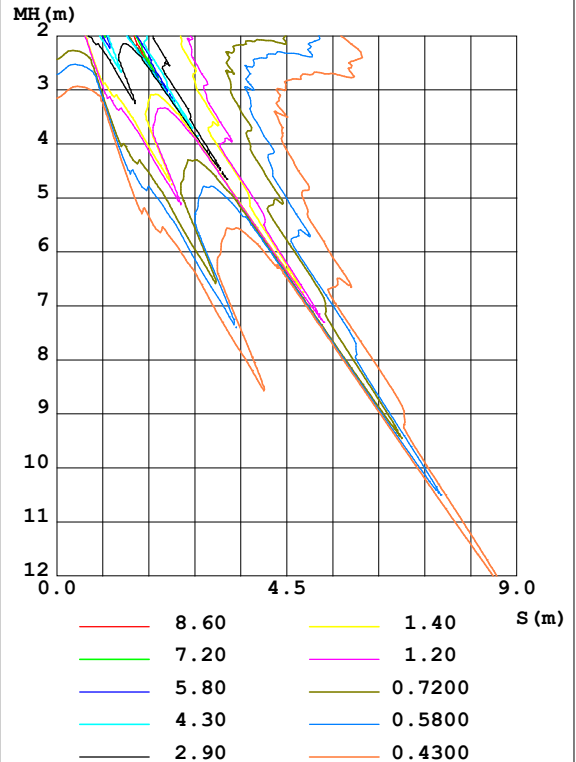
Test:U:120.00V I:0.4352A P:52.050W PF:0.9999 Freq:50.00Hz Lamp Flux:202.56x1 lm					
NAME:		TYPE:		WEIGHT:	
SPEC.:		DIM.:		SERIAL No.:	
MFR.:		SUR.:		Shielding Angle:	

DATA OF LAMP		PHOTOMETRIC DATA				Eff: 3.89 lm/W
MODEL		Imax(cd)	147.5	S/MH(C0/180)	4.43	
NOMINAL POWER(W)		LOR(%)	100.0	S/MH(C90/270)	1.20	
RATED VOLTAGE(V)		TOTAL FLUX(lm)	202.56	η UP,DN(C0-180)	17.6,41.3	
NOMINAL FLUX(lm)	202.56	CIE CLASS	SEMI-D.	η UP,DN(C180-360)	10.3,30.8	
LAMPS INSIDE	1	η up(%)	27.9	CIBSE SHR NOM	0.00	
TEST VOLTAGE(V)		η down(%)	72.1	CIBSE SHR MAX	1.00	

LUMINOUS INTENSITY DISTRIBUTION DIAGRAM



C0 PLANE ISOLUX DIAGRAM (UNIT:lx)



C Range: 0 - 360DEG
C Interval: 10.0DEG
Test Speed: HIGH
Temperature:25.3DEG
Operators:
Test Date:2021-11-05

γ Range: 0 - 180DEG
γ Interval: 0.5DEG
Test System:EVERFINE GO-R5000_V2 SYSTEM V2.0.273
Humidity:55.0%
Test Distance:2.705m [K=1.0000]
Remarks: 3184WGET

EVERFINE GONIOPHOTOMETERS SYSTEM TEST REPORT

ZONAL FLUX DIAGRAM

ZONAL FLUX DIAGRAM:

γ	C0	C45	C90	C135	C180	C225	C270	C315	γ	Φ zone	Φ total	%lum,lamp
10	3.920	4.315	4.639	5.025	4.481	3.845	3.501	3.672	0- 10	0.3992	0.3992	0.20,0.20
20	16.53	5.333	5.526	5.680	5.077	4.295	3.293	12.81	10- 20	1.517	1.916	0.95,0.95
30	21.43	25.01	11.08	8.790	6.107	8.530	3.986	16.64	20- 30	5.114	7.030	3.47,3.47
40	41.10	37.58	28.63	21.50	47.89	30.45	3.533	21.38	30- 40	14.76	21.79	10.8,10.8
50	22.22	21.49	34.83	23.15	50.17	21.55	1.025	17.71	40- 50	22.70	44.49	22,22
60	26.11	24.93	33.25	22.67	57.85	30.81	0.7497	13.20	50- 60	24.31	68.81	34,34
70	45.30	17.83	32.48	22.29	54.11	30.21	0.5501	15.56	60- 70	26.11	94.92	46.9,46.9
80	29.97	29.41	20.52	32.04	28.87	11.73	0.3828	15.80	70- 80	25.69	120.6	59.5,59.5
90	22.57	24.37	25.92	24.91	75.55	22.59	0.2391	17.33	80- 90	25.45	146.1	72.1,72.1
100	23.92	7.842	8.352	2.904	23.33	1.719	0.0970	3.680	90-100	20.01	166.1	82,82
110	44.84	17.35	36.42	3.711	31.43	3.869	0.2014	10.01	100-110	18.24	184.3	91,91
120	2.134	1.904	15.62	8.373	2.249	4.653	0.2233	6.542	110-120	14.05	198.4	97.9,97.9
130	0.7390	1.223	2.717	1.984	0.9507	0.6674	0.1595	0.8814	120-130	3.006	201.4	99.4,99.4
140	0.2276	0.5994	1.607	0.7562	0.4445	0.4946	0.1330	0.4519	130-140	0.6838	202.1	99.7,99.8
150	0.3210	0.4222	0.6310	0.7711	0.4361	0.2971	0.1426	0.3148	140-150	0.2963	202.4	99.9,99.9
160	0.1702	0.2481	0.3690	0.2011	0.3240	0.1103	0.0936	0.1471	150-160	0.1475	202.5	100,100
170	0.2999	0.2390	0.0932	0.1730	0.1418	0.0600	0.0741	0.2146	160-170	0.0526	202.6	100,100
180	0.0356	0.0517	0.1221	0.0430	0.0328	0.1132	0.0980	0.2713	170-180	0.0117	202.6	100,100
DEG	LUMINOUS INTENSITY:cd									UNIT:lm		

Conical surface Flux(90deg): 33.097 lm

%lum = 16.3%

%lamp = 16.3%

Conical surface Flux(120deg): 68.808 lm

%lum = 34.0%

%lamp = 34.0%

C Range: 0 - 360DEG
C Interval: 10.0DEG
Test Speed: HIGH
Temperature:25.3DEG
Operators:
Test Date:2021-11-05

γ Range: 0 - 180DEG
 γ Interval: 0.5DEG
Test System:EVERFINE GO-R5000_V2 SYSTEM V2.0.273
Humidity:55.0%
Test Distance:2.705m [K=1.0000]
Remarks: 3184WGET

EVERFINE GONIOPHOTOMETERS SYSTEM TEST REPORT

WEC AND CCEC

pcc	80%			70%			50%			30%			10%			0
pw	50%	30%	10%	50%	30%	10%	50%	30%	10%	50%	30%	10%	50%	30%	10%	0
pfc	20%			20%			20%			20%			20%			0
RCR	RCR:Room Cavity Ratio						Wall Exitance Coefficients (WEC)									
0.0																
1.0	.469	.267	.085	.453	.259	.082	.423	.243	.078	.396	.228	.073	.371	.215	.069	
2.0	.388	.213	.065	.373	.206	.063	.346	.192	.060	.321	.180	.056	.298	.168	.053	
3.0	.336	.179	.053	.322	.173	.052	.298	.161	.049	.275	.150	.046	.253	.140	.043	
4.0	.297	.154	.045	.285	.149	.044	.262	.139	.041	.241	.129	.039	.222	.120	.037	
5.0	.266	.136	.039	.255	.131	.038	.234	.122	.036	.215	.114	.034	.197	.105	.032	
6.0	.241	.121	.035	.231	.117	.034	.212	.109	.032	.195	.101	.030	.178	.094	.028	
7.0	.220	.109	.031	.211	.105	.030	.194	.098	.028	.178	.091	.027	.162	.084	.025	
8.0	.203	.099	.028	.195	.096	.027	.179	.089	.025	.164	.083	.024	.149	.077	.022	
9.0	.188	.091	.025	.180	.088	.025	.165	.082	.023	.151	.076	.022	.138	.070	.020	
10.0	.175	.084	.023	.168	.081	.023	.154	.075	.021	.141	.070	.020	.129	.065	.019	

pcc	80%			70%			50%			30%			10%			0
pw	50%	30%	10%	50%	30%	10%	50%	30%	10%	50%	30%	10%	50%	30%	10%	0
pfc	20%			20%			20%			20%			20%			0
RCR	RCR:Room Cavity Ratio						Ceiling Cavity Exitance Coefficients (CCEC)									
0.0	.403	.403	.403	.344	.344	.344	.235	.235	.235	.135	.135	.135	.043	.043	.043	
1.0	.406	.369	.336	.347	.317	.289	.237	.218	.200	.137	.126	.116	.044	.041	.038	
2.0	.401	.347	.302	.343	.299	.261	.235	.207	.182	.136	.120	.107	.044	.039	.035	
3.0	.394	.332	.282	.338	.286	.244	.232	.199	.171	.134	.116	.101	.043	.038	.033	
4.0	.386	.320	.269	.332	.276	.234	.228	.193	.165	.132	.113	.097	.042	.037	.032	
5.0	.379	.311	.260	.325	.269	.227	.224	.188	.160	.130	.110	.095	.042	.036	.031	
6.0	.371	.303	.254	.319	.262	.222	.220	.184	.157	.128	.108	.093	.041	.035	.031	
7.0	.363	.297	.250	.313	.257	.218	.216	.180	.154	.125	.106	.092	.041	.035	.030	
8.0	.356	.291	.247	.307	.253	.215	.212	.177	.153	.123	.105	.091	.040	.034	.030	
9.0	.350	.287	.244	.301	.249	.213	.209	.175	.151	.122	.103	.090	.039	.034	.030	
10.0	.343	.283	.242	.296	.245	.211	.205	.173	.150	.120	.102	.090	.039	.034	.030	

C Range: 0 - 360DEG
 C Interval: 10.0DEG
 Test Speed: HIGH
 Temperature:25.3DEG
 Operators:
 Test Date:2021-11-05

γ Range: 0 - 180DEG
 γ Interval: 0.5DEG
 Test System:EVERFINE GO-R5000_V2 SYSTEM V2.0.273
 Humidity:55.0%
 Test Distance:2.705m [K=1.0000]
 Remarks: 3184WGET

EVERFINE GONIOPHOTOMETERS SYSTEM TEST REPORT

UTILIZATION FACTORS TABLE

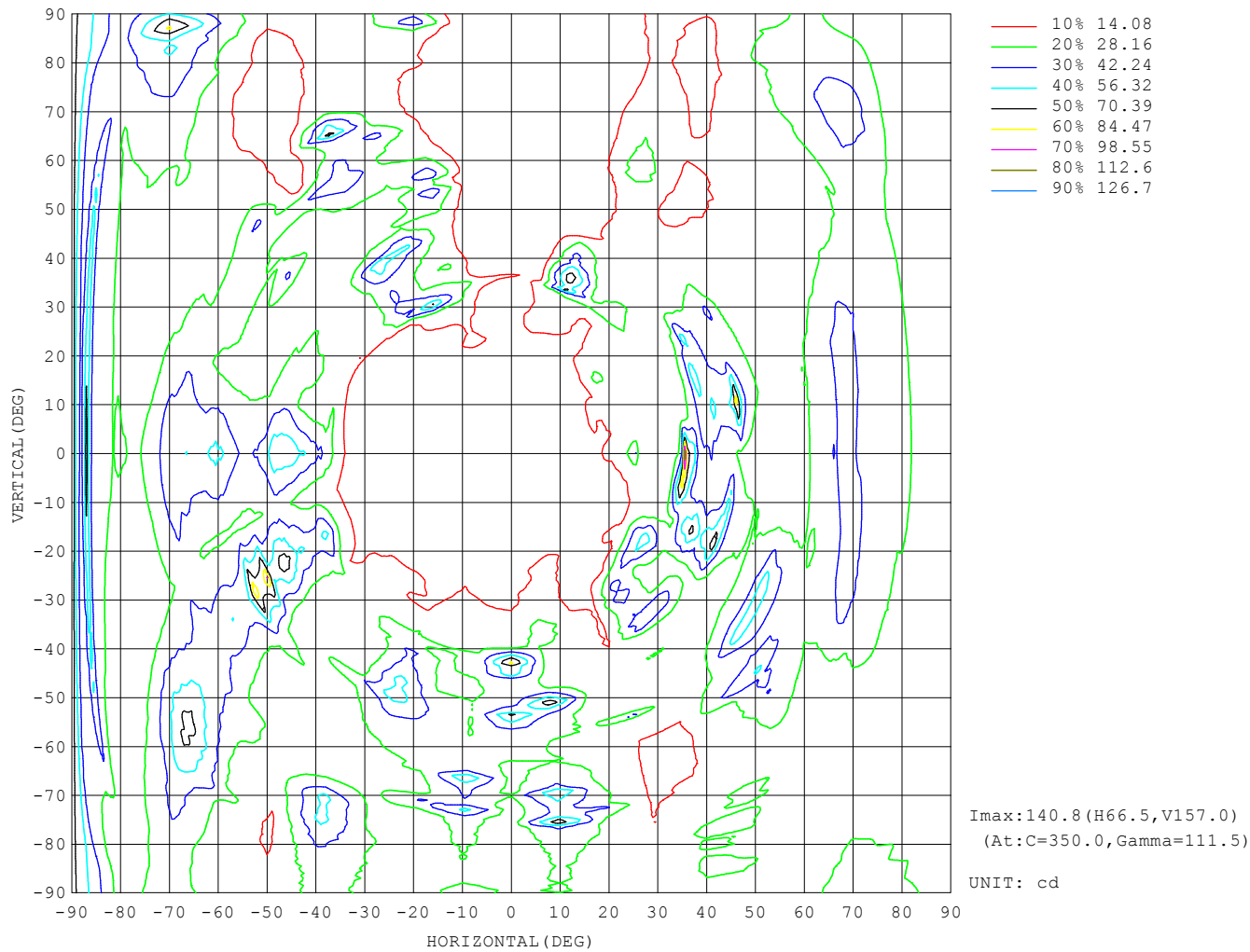
REFLECTANCE										
Ceiling	0.8	0.8	0.8	0.7	0.7	0.7	0.5	0.5	0.5	0
Walls	0.7	0.5	0.3	0.7	0.5	0.3	0.7	0.5	0.3	0
Working plane	0.2	0.2	0.2	0.2	0.2	0.2	0.2	0.2	0.2	0
ROOM INDEX	UTILIZATION FACTORS (PERCENT) $k(RI) \times RCR = 5$									
$k = 0.60$	37	23	15	35	22	14	33	21	14	7
0.80	45	30	21	44	30	21	41	28	20	11
1.00	53	38	28	51	37	28	47	37	26	16
1.25	61	45	35	58	44	34	53	41	32	21
1.50	66	51	41	63	49	40	57	46	37	25
2.00	74	61	50	71	58	49	64	53	45	31
2.50	80	67	57	75	64	55	68	58	51	35
3.00	84	72	63	80	69	60	71	63	56	39
4.00	90	79	71	85	76	68	76	69	62	44
5.00	93	84	77	88	80	73	79	72	67	48
ROOM INDEX	UF(total)									Direct
According to DIN EN 13032-2 2004			Suspended					SHRNOM = 1.25		

C Range: 0 - 360DEG
 C Interval: 10.0DEG
 Test Speed: HIGH
 Temperature: 25.3DEG
 Operators:
 Test Date: 2021-11-05

γ Range: 0 - 180DEG
 γ Interval: 0.5DEG
 Test System: EVERFINE GO-R5000_V2 SYSTEM V2.0.273
 Humidity: 55.0%
 Test Distance: 2.705m [K=1.0000]
 Remarks: 3184WGET

EVERFINE GONIOPHOTOMETERS SYSTEM TEST REPORT

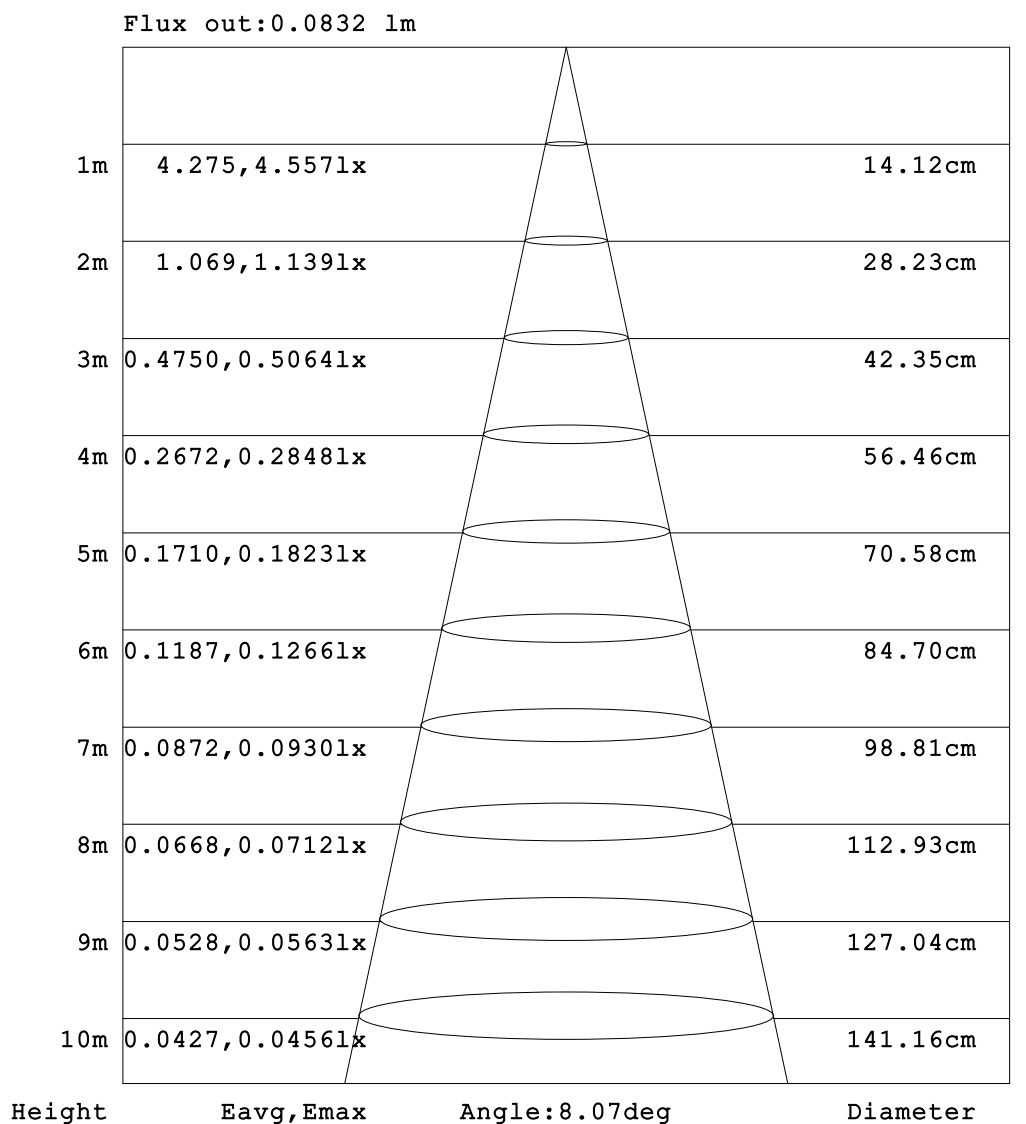
ISOCANDELA DIAGRAM



C Range: 0 - 360DEG
C Interval: 10.0DEG
Test Speed: HIGH
Temperature:25.3DEG
Operators:
Test Date:2021-11-05

γ Range: 0 - 180DEG
 γ Interval: 0.5DEG
Test System:EVERFINE GO-R5000_V2 SYSTEM V2.0.273
Humidity:55.0%
Test Distance:2.705m [K=1.0000]
Remarks: 3184WGET

AAI Figure



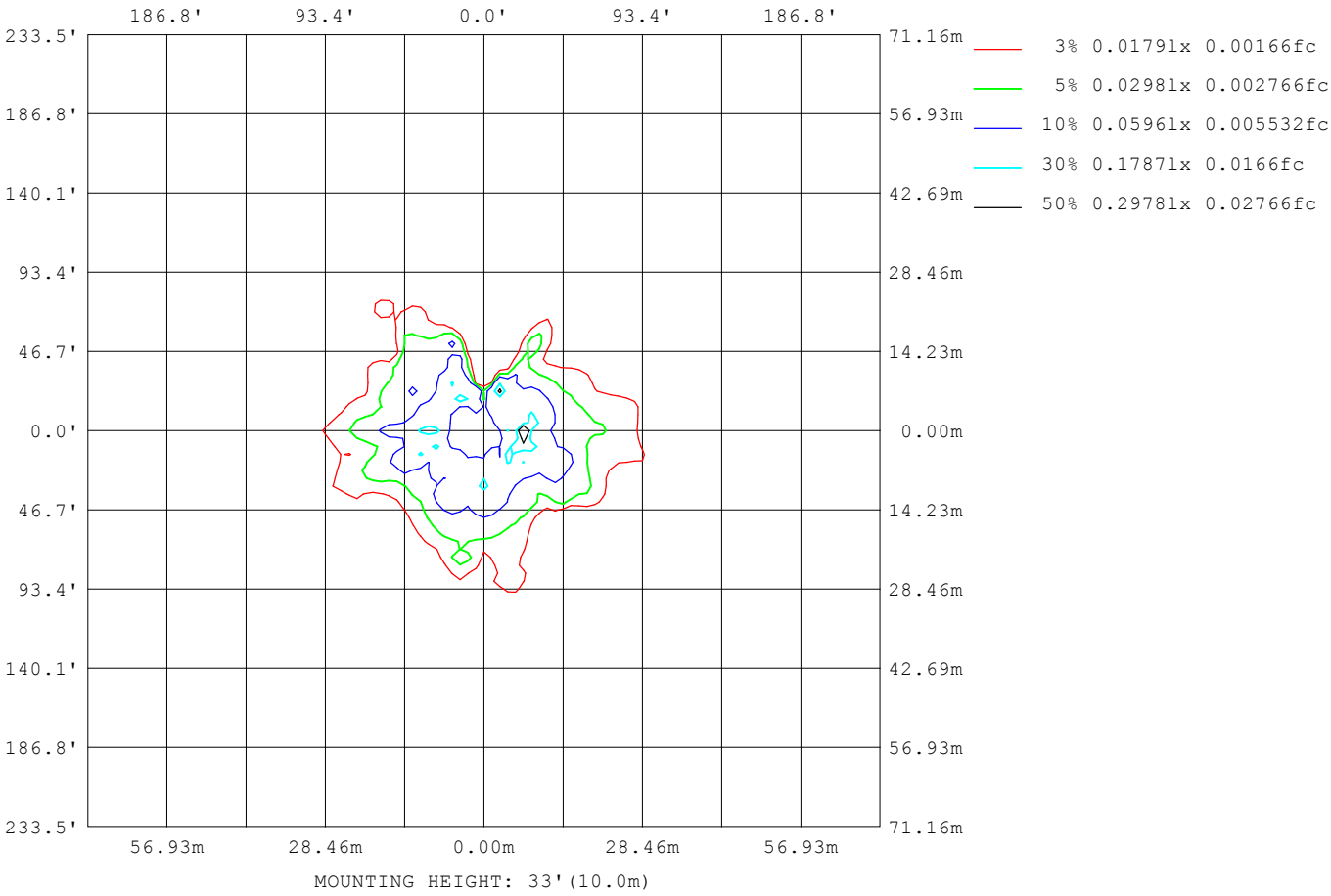
Note:The Curves indicate the illuminated area and the average illumination when the luminaire is at different distance.

C Range: 0 - 360DEG
C Interval: 10.0DEG
Test Speed: HIGH
Temperature:25.3DEG
Operators:
Test Date:2021-11-05

γ Range: 0 - 180DEG
 γ Interval: 0.5DEG
Test System:EVERFINE GO-R5000_V2 SYSTEM V2.0.273
Humidity:55.0%
Test Distance:2.705m [K=1.0000]
Remarks: 3184WGET

EVERFINE GONIOPHOTOMETERS SYSTEM TEST REPORT

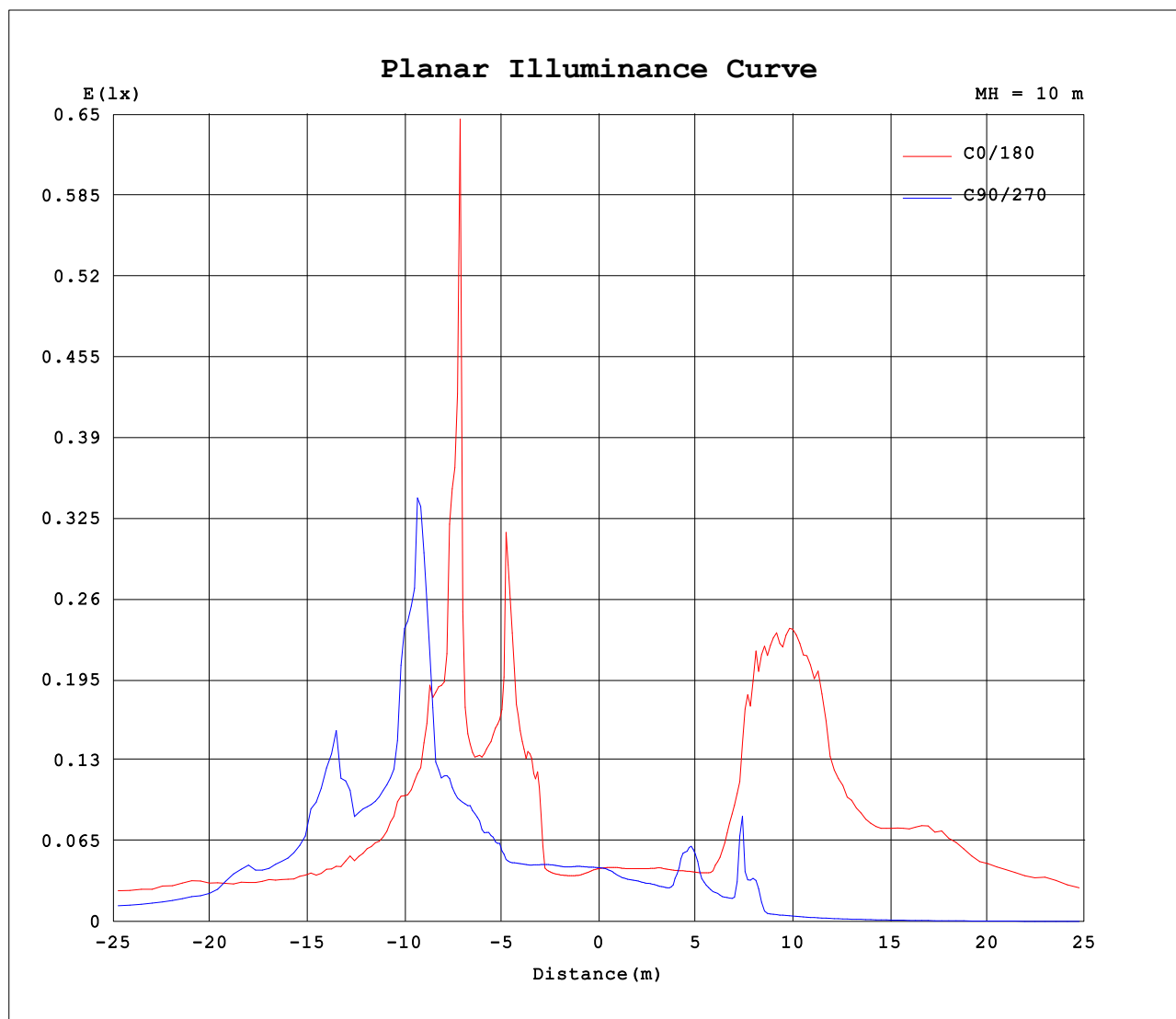
ISOLUX DIAGRAM



C Range: 0 - 360DEG
C Interval: 10.0DEG
Test Speed: HIGH
Temperature:25.3DEG
Operators:
Test Date:2021-11-05

γ Range: 0 - 180DEG
γ Interval: 0.5DEG
Test System:EVERFINE GO-R5000_V2 SYSTEM V2.0.273
Humidity:55.0%
Test Distance:2.705m [K=1.0000]
Remarks: 3184WGET

Planar Illuminance Curve



C Range: 0 - 360DEG
C Interval: 10.0DEG
Test Speed: HIGH
Temperature: 25.3DEG
Operators:
Test Date: 2021-11-05

γ Range: 0 - 180DEG
 γ Interval: 0.5DEG
Test System: EVERFINE GO-R5000_V2 SYSTEM V2.0.273
Humidity: 55.0%
Test Distance: 2.705m [K=1.0000]
Remarks: 3184WGET

EVERFINE GONIOPHOTOMETERS SYSTEM TEST REPORT

LUMINOUS DISTRIBUTION INTENSITY DATA

Table--1

UNIT: cd

C (DEG) γ (DEG)	0	10	20	30	40	50	60	70	80	90	100	110	120	130	140	150	160	170	180
0	4.28	4.29	4.30	4.31	4.32	4.33	4.34	4.34	4.35	4.36	4.37	4.38	4.40	4.40	4.41	4.40	4.41	4.42	4.28
5	3.84	3.91	3.97	4.03	4.14	4.23	4.31	4.38	4.46	4.51	4.54	4.57	4.61	4.62	4.62	4.60	4.59	4.55	4.43
10	3.92	4.01	4.10	4.20	4.28	4.35	4.46	4.52	4.59	4.64	4.73	4.82	4.93	4.99	5.06	5.02	4.90	4.74	4.48
15	4.63	4.49	4.55	4.63	4.66	4.72	4.83	4.84	4.96	5.12	5.19	5.41	5.37	5.31	5.36	5.36	5.29	5.10	4.78
20	16.5	11.1	9.27	8.61	5.38	5.29	5.20	5.36	5.46	5.53	5.73	5.71	5.66	5.70	5.66	5.60	5.50	5.31	5.08
25	38.6	16.0	13.3	12.1	14.2	5.99	6.59	17.5	14.7	6.57	6.87	7.65	6.16	6.05	5.96	5.74	5.67	5.73	5.45
30	21.4	17.1	16.9	49.7	36.4	13.7	7.78	13.9	20.8	11.1	13.0	14.9	9.03	10.8	6.77	6.61	6.62	6.22	6.11
35	45.4	77.0	25.6	39.4	23.6	42.8	12.6	17.5	30.5	17.5	19.4	24.3	12.9	14.3	25.4	10.3	13.0	11.7	17.1
40	41.1	35.7	71.8	23.0	35.1	40.0	12.7	22.6	27.6	28.6	25.9	27.0	27.9	24.9	18.1	16.1	51.3	17.3	47.9
45	28.7	51.5	70.6	23.5	27.1	23.0	15.6	19.8	25.3	66.8	32.5	25.5	45.0	22.2	22.4	23.3	49.6	25.4	66.6
50	22.2	29.7	28.0	24.1	24.3	18.6	21.1	22.3	52.5	34.8	27.3	27.5	59.3	20.9	25.4	19.5	79.7	32.0	50.2
55	20.6	25.2	45.2	47.3	25.2	16.1	19.9	25.9	31.1	56.9	27.3	40.3	52.0	28.3	26.4	25.9	88.5	25.5	40.7
60	26.1	27.3	39.4	40.2	34.4	15.4	16.6	25.1	27.6	33.3	29.4	37.9	35.7	22.6	22.8	23.9	52.0	26.3	57.8
65	41.2	29.9	29.9	44.6	19.9	12.9	13.0	25.0	33.8	24.7	39.5	29.8	25.6	21.9	17.9	24.5	54.0	26.5	52.7
70	45.3	48.8	22.8	30.3	21.7	13.9	12.7	28.9	66.9	32.5	44.3	23.3	25.1	24.8	19.8	33.2	50.9	32.9	54.1
75	33.7	34.7	18.9	22.2	25.9	17.8	13.5	30.8	63.3	19.7	34.1	19.6	25.4	61.7	21.0	27.5	71.4	23.2	29.5
80	30.0	25.0	19.2	21.1	29.2	29.6	15.3	24.7	33.3	20.5	31.2	19.8	29.2	51.6	12.5	32.4	64.1	18.5	28.9
85	25.2	24.1	26.2	20.5	26.9	29.7	16.8	24.4	29.0	22.7	27.1	20.3	28.7	37.0	13.9	19.0	41.9	18.3	37.6
90	22.6	31.1	40.8	20.8	25.6	23.2	18.4	24.0	27.8	25.9	32.5	22.1	26.8	32.6	17.2	20.2	37.5	20.6	75.5
95	12.7	2.78	4.87	10.1	23.7	18.3	26.8	21.9	34.5	28.3	32.7	37.5	25.8	32.4	19.6	22.5	8.53	12.9	24.7
100	23.9	39.4	51.8	20.8	13.8	1.86	2.77	7.04	6.07	8.35	9.60	9.13	3.36	3.00	2.80	30.9	59.8	17.9	23.3
105	126	26.8	28.7	21.0	23.1	10.4	13.5	1.71	13.5	4.12	8.31	19.7	1.54	22.8	18.0	43.1	55.1	23.7	29.8
110	44.8	19.3	24.3	20.3	27.6	7.07	2.08	6.71	40.8	36.4	22.6	25.4	2.85	2.77	4.65	14.3	38.3	18.4	31.4
115	15.4	17.2	19.8	14.5	10.2	2.37	4.65	27.1	31.8	19.4	55.6	27.6	96.9	15.1	2.35	3.44	3.65	4.23	4.81
120	2.13	3.34	1.82	1.98	1.76	2.05	18.5	32.8	29.6	15.6	32.6	37.3	14.8	14.6	2.15	2.25	2.01	2.19	2.25
125	0.81	0.79	1.51	1.59	1.44	1.53	9.69	16.8	9.68	9.93	3.25	3.02	3.79	2.81	1.97	1.83	1.62	1.67	1.77
130	0.74	1.25	1.15	0.95	1.18	1.27	1.63	2.15	2.84	2.72	2.04	2.26	2.50	2.25	1.72	0.89	1.33	1.21	0.95
135	0.53	0.91	0.58	0.82	0.70	1.14	1.41	1.78	2.18	2.16	1.71	1.78	1.87	1.79	0.94	0.76	0.88	0.59	0.65
140	0.23	0.38	0.37	0.76	0.68	0.52	1.04	1.38	1.56	1.61	1.36	1.37	1.42	0.67	0.85	0.95	0.64	0.44	0.44
145	0.26	0.53	0.42	0.60	0.55	0.46	0.42	0.50	0.78	0.94	0.82	0.51	0.45	0.93	0.87	0.75	0.39	0.46	0.50
150	0.32	0.34	0.17	0.32	0.38	0.46	0.70	0.77	0.72	0.63	0.55	0.58	0.80	0.82	0.72	0.62	0.17	0.50	0.44
155	0.23	0.25	0.18	0.11	0.34	0.56	0.62	0.67	0.71	0.66	0.44	0.27	0.49	0.61	0.58	0.19	0.30	0.45	0.40
160	0.17	0.21	0.29	0.12	0.16	0.34	0.52	0.55	0.50	0.37	0.24	0.16	0.37	0.27	0.13	0.20	0.44	0.41	0.32
165	0.30	0.36	0.38	0.28	0.15	0.08	0.09	0.14	0.16	0.13	0.11	0.08	0.08	0.08	0.22	0.28	0.33	0.32	0.23
170	0.30	0.35	0.35	0.28	0.28	0.20	0.14	0.06	0.05	0.09	0.14	0.15	0.17	0.18	0.17	0.17	0.16	0.15	0.14
175	0.22	0.19	0.09	0.05	0.05	0.05	0.04	0.04	0.04	0.04	0.04	0.04	0.05	0.07	0.08	0.08	0.08	0.07	0.07
180	0.04	0.04	0.04	0.04	0.05	0.06	0.07	0.10	0.12	0.12	0.10	0.07	0.06	0.05	0.04	0.04	0.03	0.03	0.03

C Range: 0 - 360DEG
C Interval: 10.0DEG
Test Speed: HIGH
Temperature:25.3DEG
Operators:
Test Date:2021-11-05

γ Range: 0 - 180DEG
γ Interval: 0.5DEG
Test System:EVERFINE GO-R5000_V2 SYSTEM V2.0.273
Humidity:55.0%
Test Distance:2.705m [K=1.0000]
Remarks: 3184WGET

EVERFINE GONIOPHOTOMETERS SYSTEM TEST REPORT

LUMINOUS DISTRIBUTION INTENSITY DATA

Table--2

UNIT: cd

C (DEG) γ (DEG)	190	200	210	220	230	240	250	260	270	280	290	300	310	320	330	340	350		
0	4.29	4.30	4.31	4.32	4.33	4.34	4.34	4.35	4.36	4.37	4.38	4.40	4.40	4.41	4.40	4.41	4.42		
5	4.38	4.35	4.28	4.23	4.19	4.13	4.05	3.95	3.90	3.84	3.80	3.76	3.75	3.79	3.85	3.91	3.95		
10	4.33	4.20	4.06	3.89	3.80	3.75	3.67	3.61	3.50	3.47	3.50	3.55	3.61	3.73	3.81	3.86	3.94		
15	4.60	4.35	4.14	4.09	4.03	3.89	3.67	3.51	3.40	3.39	3.50	3.68	3.86	4.09	4.41	5.82	7.72		
20	4.87	4.64	4.42	4.36	4.23	4.06	3.84	3.57	3.29	11.2	8.73	8.54	12.4	13.2	14.4	15.0	13.7		
25	5.27	5.13	4.97	4.84	4.95	4.64	18.6	8.37	8.05	14.0	11.7	10.2	18.3	20.9	24.3	16.7	17.4		
30	7.45	7.63	6.58	8.33	8.73	21.1	18.5	9.15	3.99	16.4	19.5	12.4	16.8	16.5	16.6	25.6	20.3		
35	14.5	12.4	13.6	17.2	40.2	44.7	37.8	16.4	3.58	18.2	80.2	27.2	35.4	14.5	17.6	23.3	21.5		
40	22.0	26.0	18.2	16.6	44.3	25.3	30.0	2.99	3.53	5.95	54.4	19.7	21.1	21.6	30.6	71.4	46.7		
45	31.3	32.8	22.6	20.6	60.3	39.7	19.9	2.86	1.32	1.11	27.9	21.5	15.3	21.3	36.9	37.4	53.7		
50	29.2	23.5	17.6	16.4	26.7	28.3	24.3	2.33	1.02	0.90	4.73	20.6	14.3	21.1	27.7	28.5	32.0		
55	25.9	20.0	36.6	17.3	24.5	23.8	51.7	2.08	0.86	0.83	5.01	19.1	12.7	17.6	20.5	23.5	25.6		
60	25.5	33.4	27.8	22.2	39.4	28.0	42.4	1.67	0.75	0.77	4.58	33.8	11.5	14.9	22.3	22.7	26.8		
65	32.6	29.9	46.1	7.89	45.4	30.2	16.8	1.68	0.64	0.73	5.35	32.4	13.1	14.9	23.0	23.3	34.4		
70	27.7	18.4	23.2	6.30	54.1	26.9	12.0	1.27	0.55	0.61	6.01	26.7	14.1	17.0	22.4	24.8	48.2		
75	20.6	23.3	15.2	4.66	26.1	19.2	10.7	1.02	0.45	0.52	3.05	20.9	12.1	19.6	24.5	27.9	41.9		
80	23.6	30.8	15.8	4.79	18.7	19.1	15.6	0.94	0.38	0.44	1.62	16.7	10.8	20.8	36.1	42.4	31.7		
85	27.4	48.6	25.8	7.76	18.9	25.2	19.1	0.74	0.31	0.41	1.10	16.9	10.2	28.9	38.5	40.9	21.8		
90	32.0	56.4	38.0	17.4	27.8	26.2	37.0	0.69	0.24	0.28	0.87	19.0	15.6	19.0	32.0	21.5	18.9		
95	19.5	11.2	14.4	18.2	19.4	18.1	14.3	0.46	0.09	0.23	0.84	26.4	19.3	10.9	2.38	1.92	2.67		
100	21.7	27.2	22.5	2.34	1.09	1.95	1.83	0.32	0.10	0.20	0.44	1.32	1.24	6.12	16.7	18.3	20.6		
105	30.6	34.5	22.0	6.49	14.2	0.85	2.68	0.56	0.15	0.36	0.73	0.90	7.51	12.0	15.6	34.4	29.6		
110	49.5	33.3	20.5	6.69	1.04	27.0	4.75	0.60	0.20	0.44	1.02	5.78	1.34	18.7	18.0	37.9	39.4		
115	4.40	3.36	2.13	1.34	2.04	68.4	2.49	0.41	0.22	0.40	0.75	18.4	2.75	1.66	10.9	4.82	16.3		
120	1.56	1.83	1.37	1.16	8.14	7.90	0.79	0.38	0.22	0.34	0.58	28.3	11.7	1.38	1.66	2.08	2.38		
125	1.13	1.20	1.04	0.84	0.87	1.24	0.63	0.33	0.20	0.26	0.44	3.92	8.28	1.09	1.28	1.41	0.78		
130	0.78	0.60	0.71	0.67	0.66	0.89	0.58	0.24	0.16	0.18	0.36	0.79	0.90	0.86	0.95	0.90	1.01		
135	0.53	0.33	0.51	0.55	0.68	0.69	0.39	0.14	0.10	0.10	0.25	0.56	0.57	0.63	0.65	0.28	0.75		
140	0.38	0.27	0.43	0.44	0.55	0.51	0.32	0.15	0.13	0.12	0.24	0.41	0.47	0.43	0.33	0.12	0.25		
145	0.42	0.16	0.29	0.38	0.42	0.40	0.24	0.17	0.15	0.13	0.20	0.30	0.39	0.39	0.26	0.28	0.39		
150	0.36	0.17	0.23	0.28	0.31	0.33	0.20	0.16	0.14	0.13	0.17	0.28	0.33	0.30	0.22	0.10	0.27		
155	0.33	0.21	0.11	0.19	0.19	0.22	0.26	0.17	0.14	0.16	0.22	0.25	0.21	0.22	0.15	0.18	0.23		
160	0.29	0.22	0.15	0.07	0.15	0.14	0.10	0.09	0.09	0.09	0.10	0.11	0.17	0.13	0.11	0.26	0.14		
165	0.24	0.21	0.16	0.12	0.06	0.05	0.06	0.06	0.06	0.07	0.12	0.10	0.07	0.10	0.22	0.24	0.24		
170	0.13	0.10	0.07	0.06	0.06	0.06	0.05	0.06	0.07	0.08	0.11	0.15	0.21	0.22	0.21	0.21	0.23		
175	0.07	0.07	0.07	0.07	0.09	0.07	0.06	0.07	0.09	0.14	0.17	0.17	0.20	0.21	0.23	0.24	0.26		
180	0.00	0.07	0.07	0.08	0.15	0.10	0.06	0.09	0.10	0.14	0.15	0.18	0.24	0.31	0.33	0.28	0.26		

C Range: 0 - 360DEG
C Interval: 10.0DEG
Test Speed: HIGH
Temperature:25.3DEG
Operators:
Test Date:2021-11-05

γ Range: 0 - 180DEG
γ Interval: 0.5DEG
Test System:EVERFINE GO-R5000_V2 SYSTEM V2.0.273
Humidity:55.0%
Test Distance:2.705m [K=1.0000]
Remarks: 3184WGET