

Test report

Light measurement results

Print date 2/21/2025

Laboratory and Equipment

Test lab

Spectrometer Manufacturer and Model

Measurement date

8/28/2024

Measurement Conditions

Tested c-planes

5 – distance {C_PLANES_DIST}°

Tested gamma angles

181 – {H_PLANES_DIST}°

Input Power

10.7 W

Tested Light Source

Luminaire

87653WTWT - Snug

Basic Luminous Shape

SPOT

Item No.

Manufacturer

MAXIM LIGHTING

Main Light Measurement Results

Output – Total Lumen (Up% / Down%)

767 lm – 2.51% / 97.49%

Efficiency

72 lm/W

Peak Intensity

263 cd

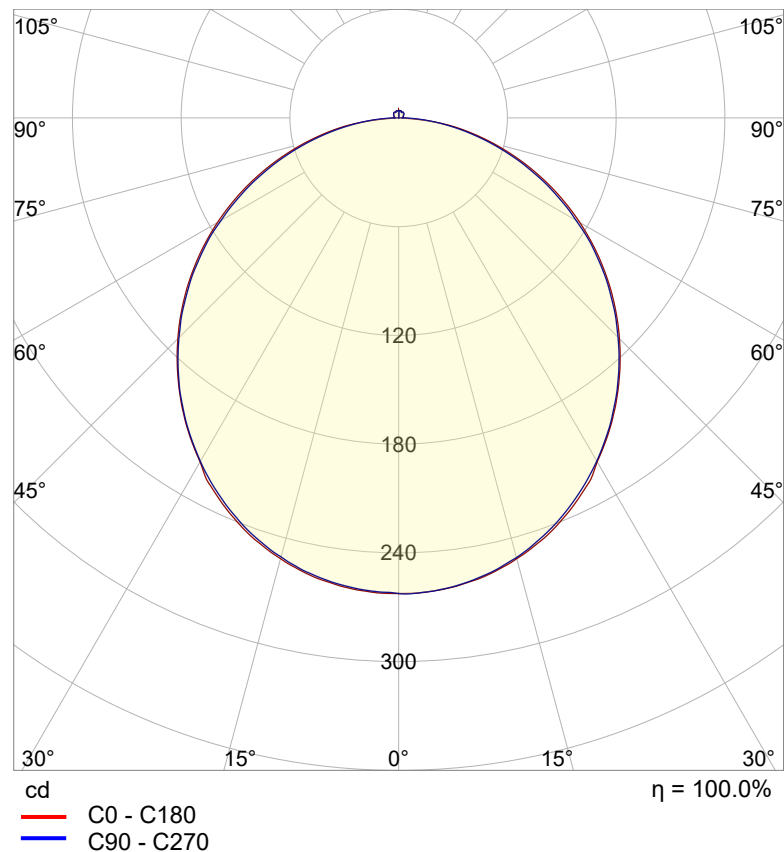
Correlated Color Temperature. CCT

3000 K

Color Rendering Index

CRI 90.0

Polar light distribution diagram

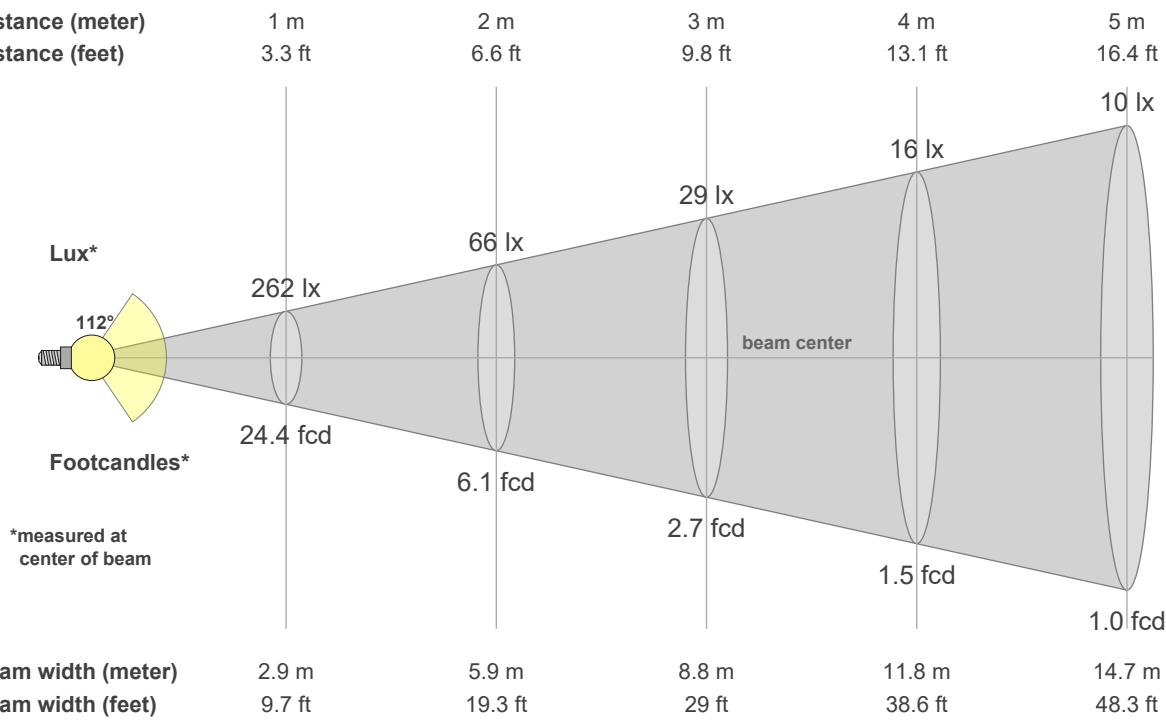


Test report

Light measurement results

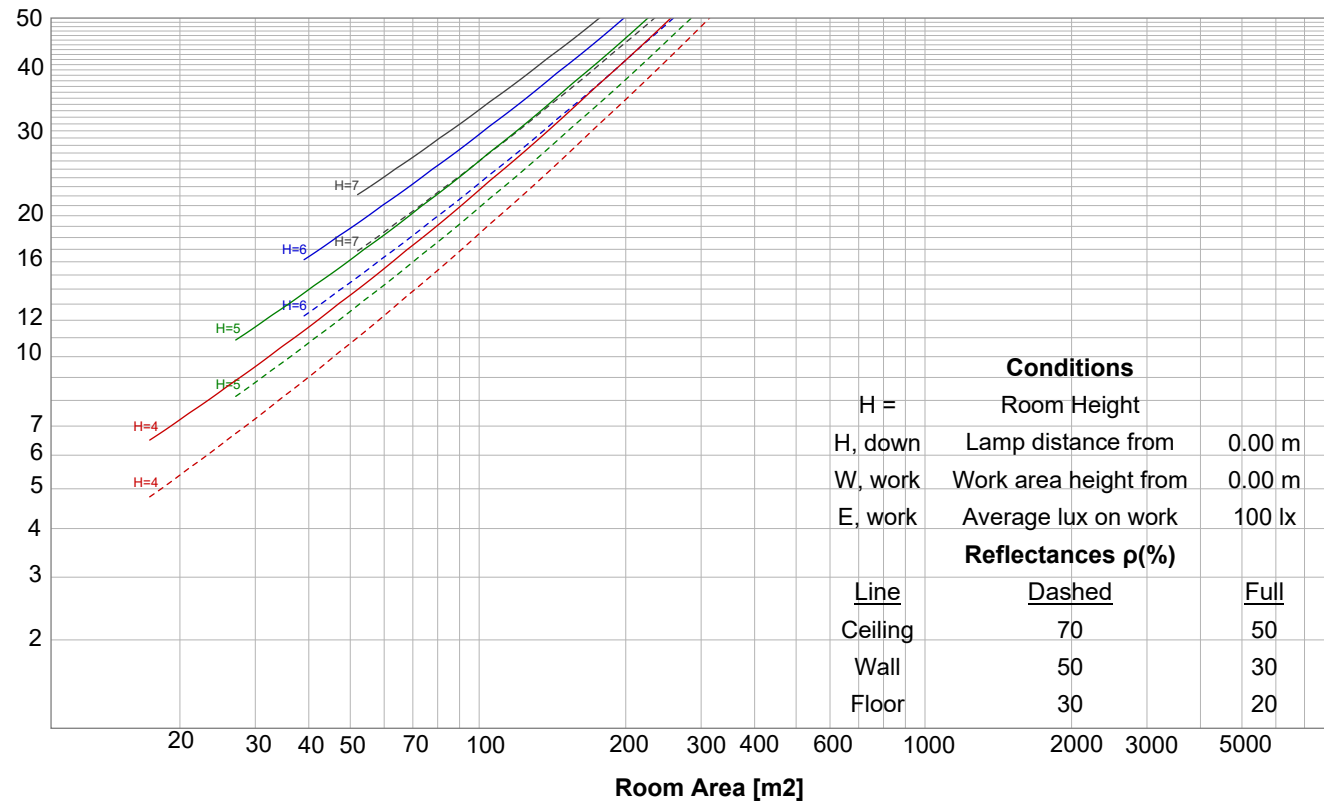
Print date 2/21/2025

Beam details

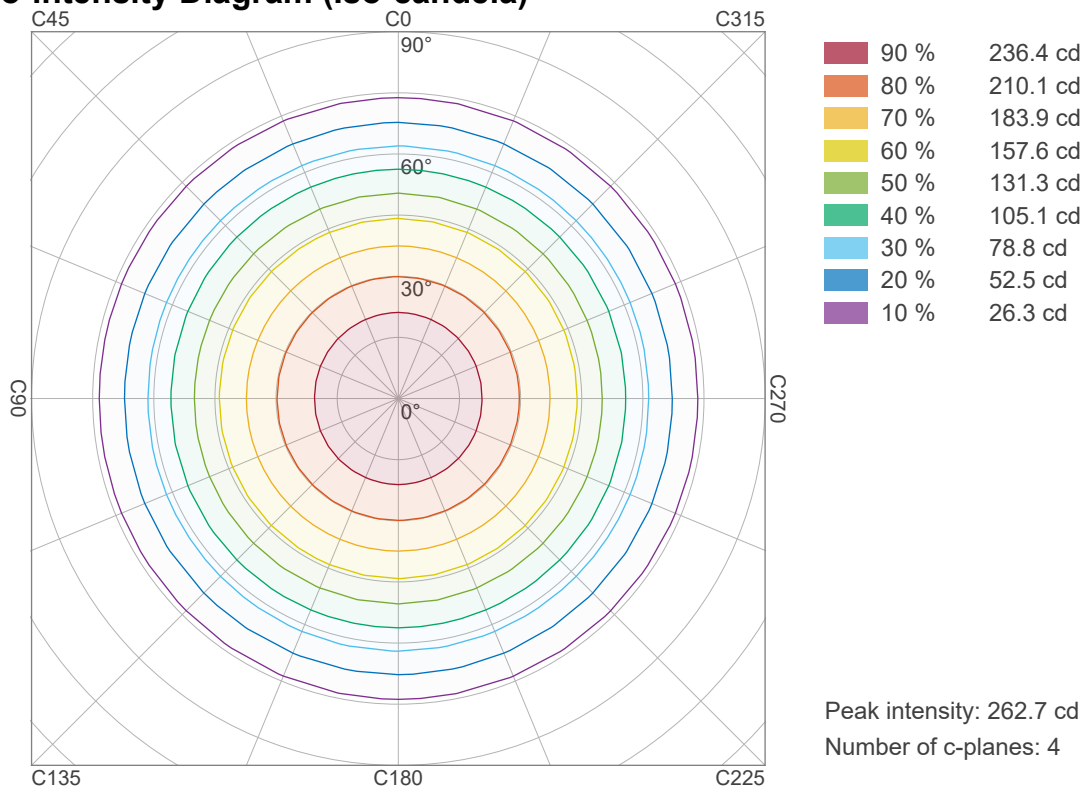


Luminaire budgetary diagram

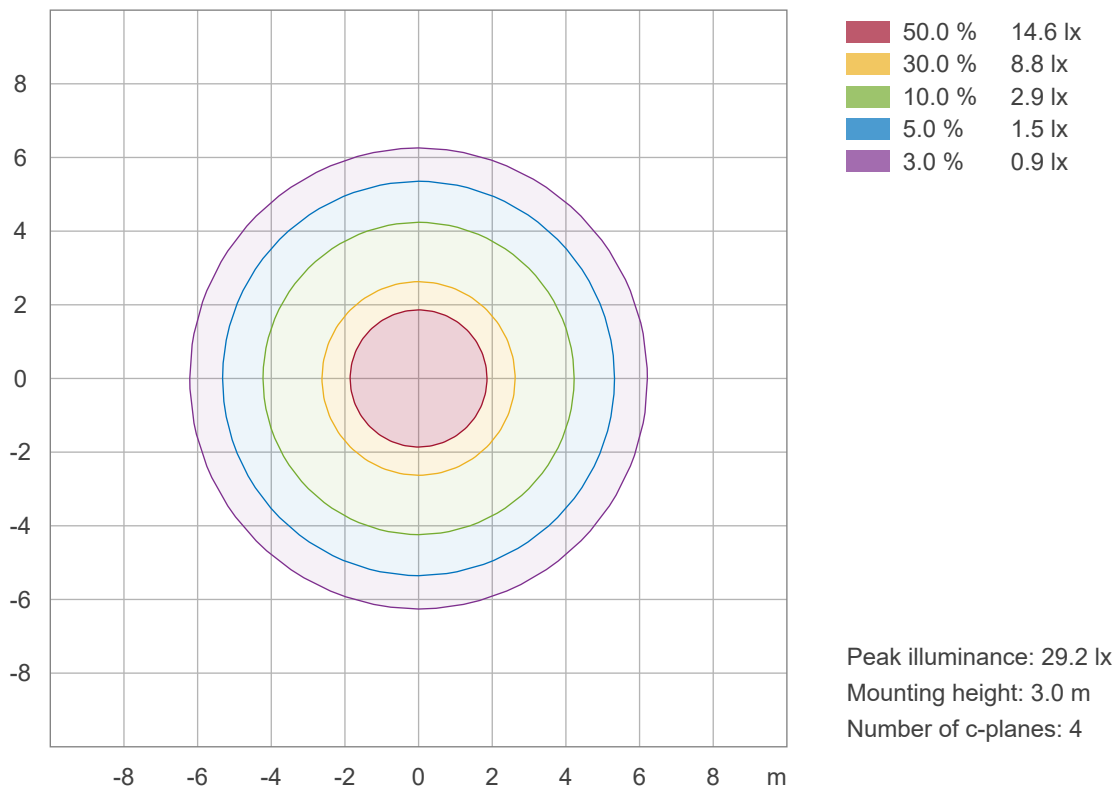
LAMPS (number of lamps)



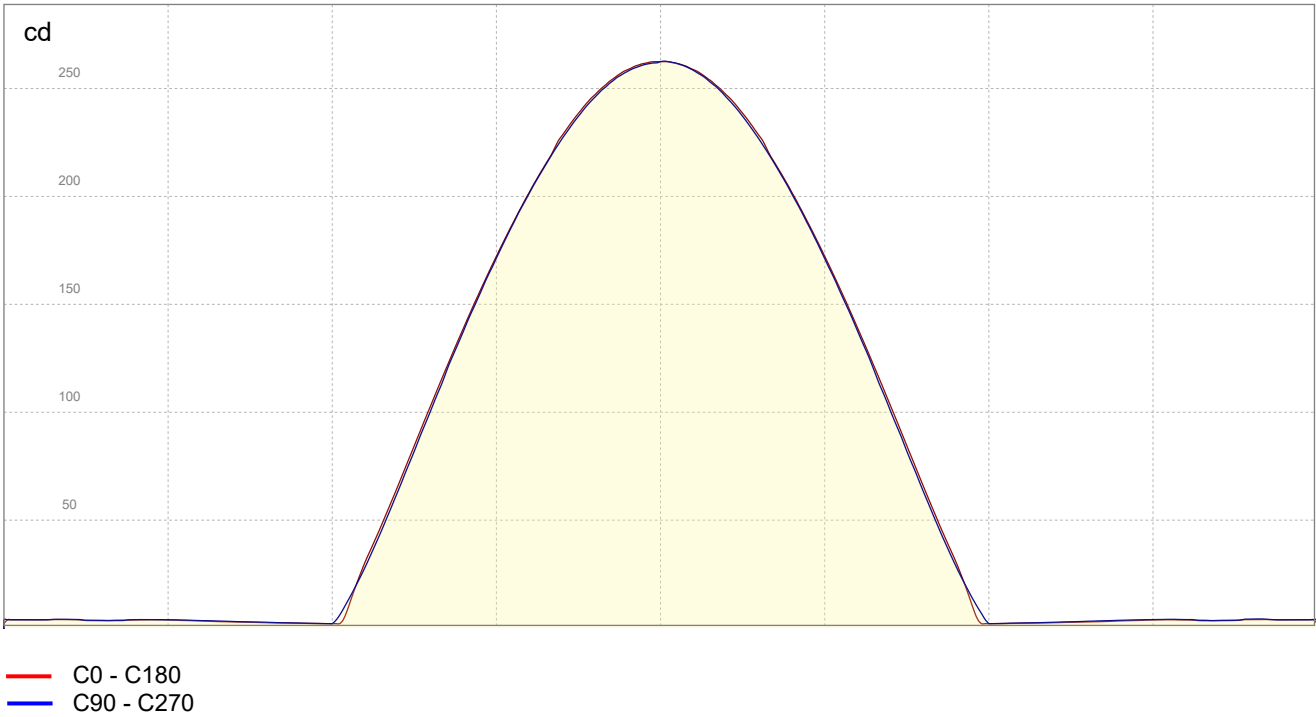
Iso-intensity Diagram (Iso-candela)



Iso-illuminance Diagram (Iso-lux)

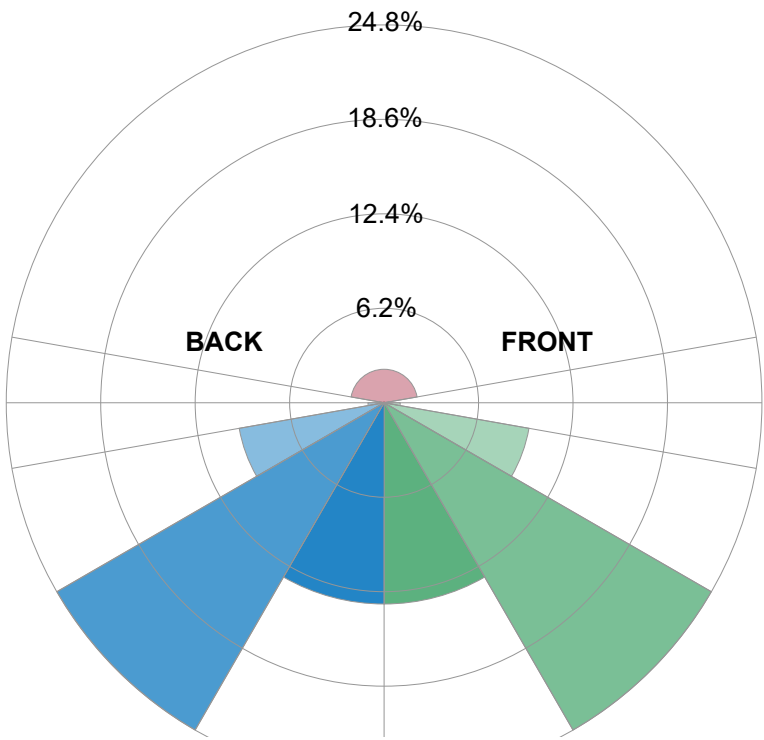


Linear intensity distribution



IESNA TM-15-07 Luminaire Classification System For Outdoor Luminaires

BUG rating B0 U2 G0



Forward Light

Low (0-30°)	101.4	lm	13.2%
Medium (30-60°)	190.3	lm	24.8%
High (60-80°)	74.1	lm	9.7%
Very High	8.1	lm	1.1%

Back Light

Low (0-30°)	101.4	lm	13.2%
Medium (30-60°)	190.3	lm	24.8%
High (60-80°)	74.1	lm	9.7%
Very High	8.1	lm	1.1%

Uplight

Low (90-100°)	2.4	lm	0.3%
High (100-180°)	16.9	lm	2.2%

Total

Sum	767	lm	100%
-----	-----	----	------