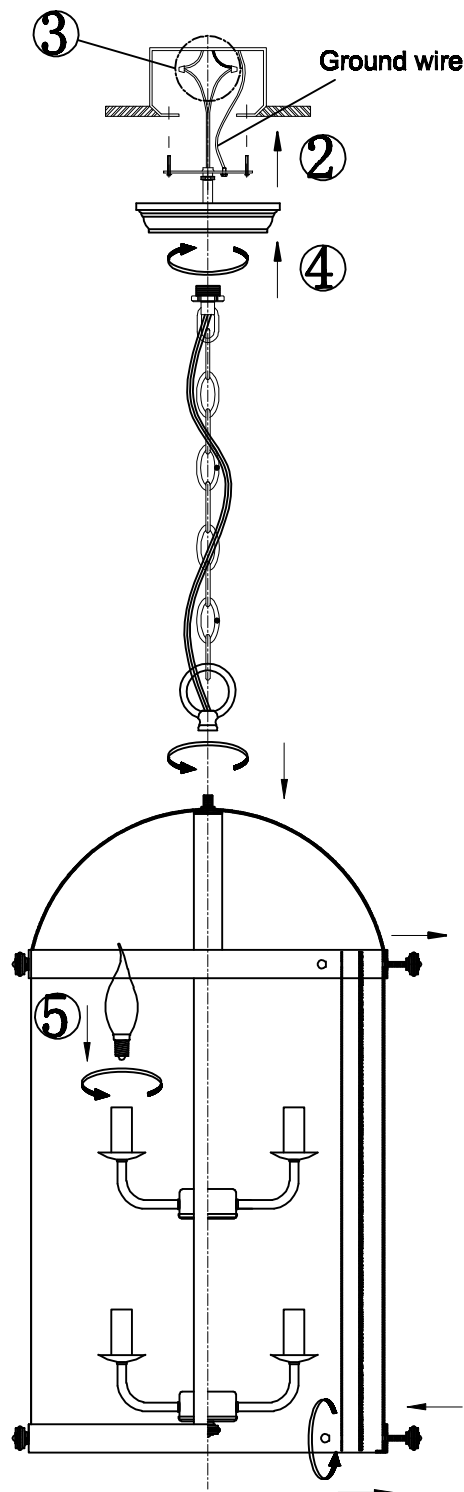




## Assembly Instruction for 21554 CLSN/CLBZ

1. Turn breaker off for circuit on outlet where fixture is to be installed.
2. Remove mounting bracket from fixture and install to electrical box .
3. Wire fixture to wires in outlet box. Green wire is for Ground.
4. Install fixture to back-plate and tighten the ring that fixture meets the wall.
5. Install maximum 60 watt medium base lamp into socket.

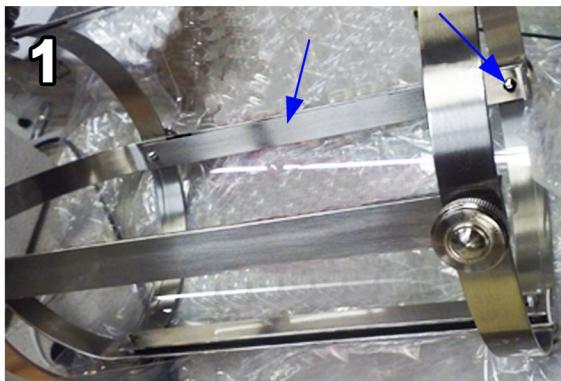


# Glass Installation

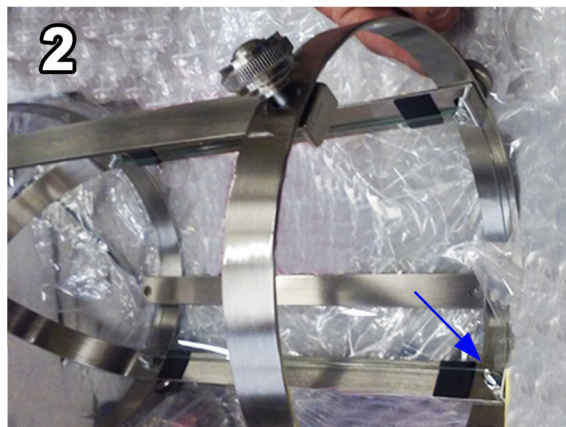
## TARA



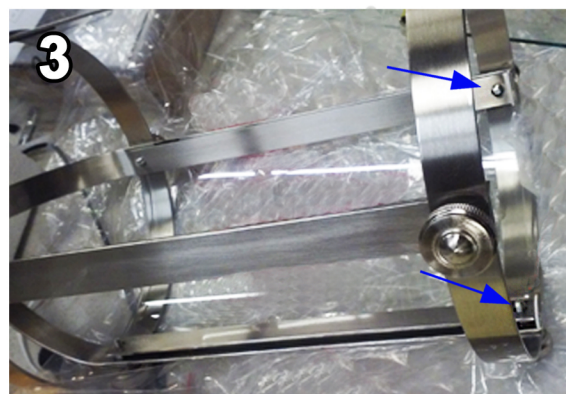
The Tara Collection was designed to have the glass fit in between the plate by removing the nuts and placing the glass next to the screws. See instructions below.



Remove ball & nut inner plate.  
Position glass between 2 screws.



Remove nut



Replace nut, inner plate & ball nut.