

SMART REMOTE

IMPORTANT SAFETY PRECAUTIONS

WARNING: To avoid electrical shock, be sure that electricity has been turned off at the circuit breaker or fuse box before wiring.

ALL wiring must be in accordance with the National Electrical Code and local electrical codes. A qualified electrician should perform electrical installation.

DO NOT use water or detergents to clean the remote transmitting unit. A dry dust cloth will be suitable for most cleaning.

ONLY the flip switch and transmitter unit should change the fan speeds.

Do not use the pull chain to change fan speeds after installation, as damage could result to your remote control or ceiling fan.

DO NOT use the reverse switch when the ceiling fan is operating. This could result in damage to your wall control or ceiling fan.

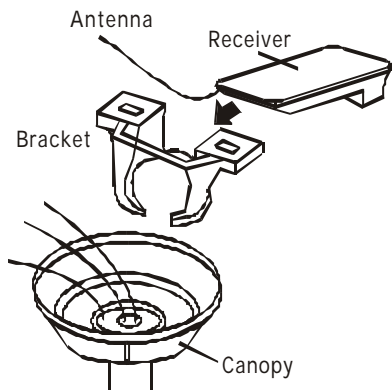
INSTALLATION AND WIRING

WARNING: To avoid electrical shock, be sure that electricity has been turned off at the circuit breaker or fuse box before wiring.

IMPORTANT: Follow these steps to insure proper installation and operation

Install your ceiling fan by the wiring diagram provided with the fan without the receiver in place.

Turn on electrical power at the circuit breaker or fuse box. Turn wall switch "ON".



Set your ceiling fan to HIGH speed with its pull chain Control. Do not adjust the ceiling fan pull chain after this Step.

Turn on light kit (if present).

Turn wall switch "OFF".

Turn off electrical power at the circuit breaker or Fuse box.

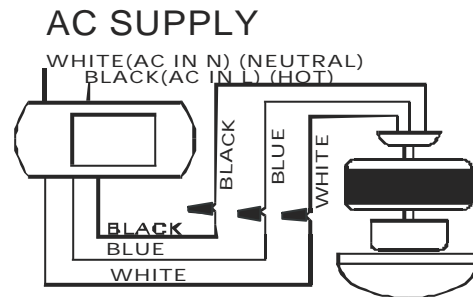
Connecting the Receiver

1. Disconnect the wires from the ceiling to the fan. Install the receiver to the ceiling fan according to your mounting type (Figure 1). Be sure the antenna is positioned so it is exposed when canopy is attached. Do not modify or damage the antenna wire as control performance may be reduced.

2. Use the two larger wire nuts supplied to connect the receiver and house wiring: then use the three small wire nuts supplied to connect the receiver and ceiling fan wiring. See Wiring Diagram in Figure 2.

BLACK "AC in L" to HOT (Black) wire in ceiling.

WHITE "AC in N" to NEUTRAL (White) from ceiling.



WHITE (TO MOTOR N) to WHITE wire from fan.

BLUE (FOR LIGHT) to BLUE wire from fan.

BLACK (TO MOTOR L) to BLACK wire from fan.

PREFER: connect the ceiling to a power switch in the power line to get the flip switch control function.

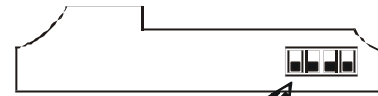
3. Complete ceiling fan installation and assembly according to its provided instructions.

Resetting Frequency Code.

A1. Set the transmitter and receiver to the same code.

A2. Power on the ceiling fan.

A3. To match the code between transmitter and receiver, then it will be used.



SECURITY CODE SWITCH
SET THE SECURITY CODE TO
OTHERS POSITION TO AVOID INTERFERENCE

IMPORTANT: They must be adjusted to the same code, or they can't communicate to each other.

TRANSMITTER OPERATION

1,2,3,0 to set the fan speeds.

Press "1" for High speed. "2" for Medium. "3" for Low.

Press "0" to turn OFF.

Light on/off: to toggle set the light on/off.

Dimmer: to set the light power rating. This key function is only when the light is ON.

The remote with flip control function that permits you can use regular power switch the already mounted on the wall to control the ceiling fan and light kit only using the flip switch. It is very helpful when you can find not the transmitter or when you stand near by the power switch.

Light control:

Flip the flip switch from on state to off and flip back to ON shorter than 0.5 second, it will change the light power rating. It can change the light power rating from current to lower power rating and back maxim power rating. After the light power rating been changed, the receiver will echo a short beep.

How go use power switch function.

First, your ceiling fan must be connected to a regular power switch. (Any type of regular flip power switch that permit switching ON/OFF.)

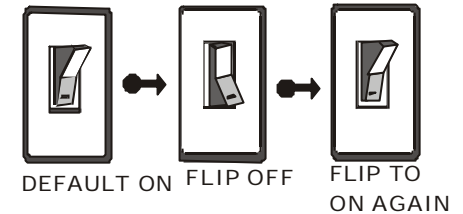
How to controller Ceiling fan:

Slow flip (Turn the power switch from on state to off state flip and back to on state longer than 0.5 second.) will change the fan speeds. The controlling sequence is from current speed to lower speed and back to high speed in circling. After the ceiling fan speeds has been changed by the flip switch. The receiver will echo a series of beeps.

When set the speed to HIGH speed, will echo 4 long beeps.

Medium speed: 3 long beeps.

BEFORE USING FLIP SWITCH THE POWER SWITCH IS "ON"



Low speed : 2 long beep.

Lower low speed: 1 long beeps.

Stop: 4 short beeps.

INSTALL BATTERY:

Open the transmitter back cover.

Find a battery connector to install 9V battery.

CAUTION: when distant goes shorter, please check the battery Power.

Power Rating: 127V/60Hz

Light: 200W(Max)

Fan: 85W(Max)