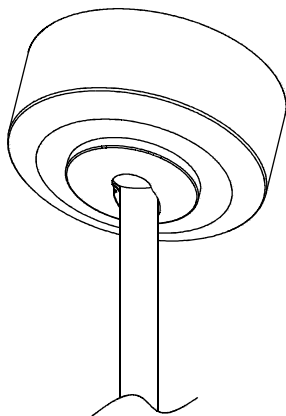




Item/Model Number: FSCKT45

Sloped Ceiling Adaptor for 1.00" Fan Rod



Weight Poids: 7.25" - 2.78 lbs (1.26 kg)

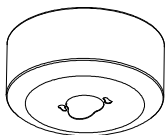
Veuillez consulter un électricien qualifié pour suspendre le luminaire et le câblage.

Installation and safety instructions Read and save these instructions

Instructions d'installation et de sécurité lisez et sauvegardez ces instructions

Made in China | Fabrique en Chine | Hecho en China

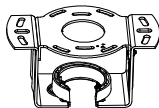
I. Parts list



1*Canopy



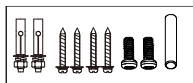
1*Hanging ball



1*Mounting Bracket



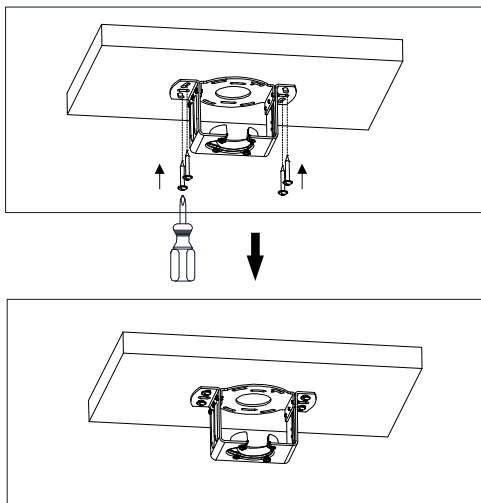
1*Canopy cover



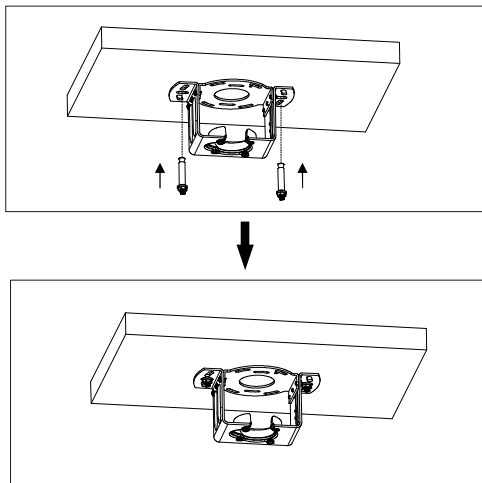
1*Screw package

II. Mounting Bracket Fasten Method

1. Wood ceiling: Drill the mounting bracket directly into the wood ceiling with wood screws(4 pieces) or Use tools to fix the mounting bracket tightly (The ceiling must bear more than 60KG)



2. Concrete ceiling: First use an $\varnothing 8\text{mm}$ hammer drill bit to drill the hole according to the length of the expansion screw, then use the equipped expansion screws (2 Pieces) to fix the bracket on the ceiling, and then tighten the nut of the expansion screw.

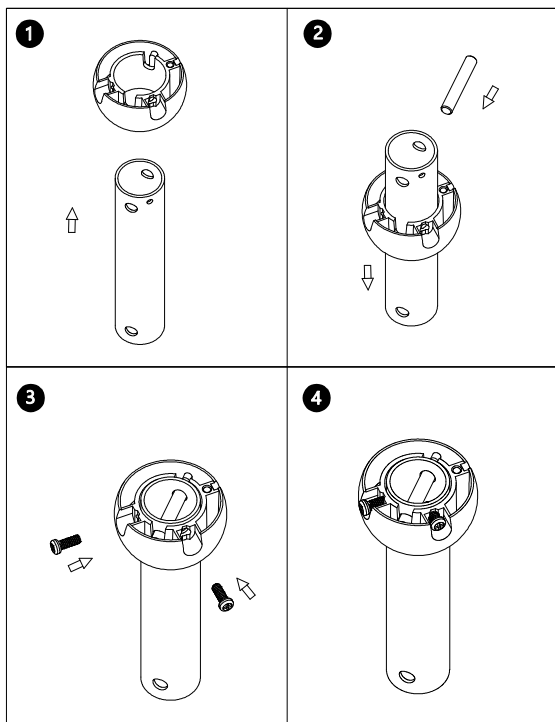


Please use 8mm drill hole before installing with M6 expansion screws

III. Hanging Ball Installation

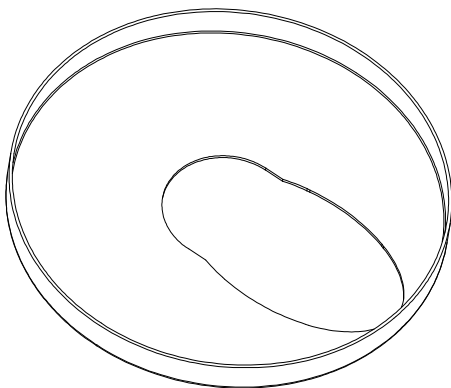
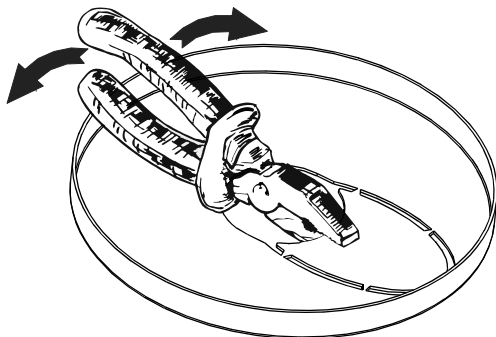
- a. Thread the downrod through the hangingball.
(as shown in Figure 1).
- b. Insert the pin into the downrod. (as shown in Figure 2)
- c. Lock two screws tightly. (as shown in Figure 3). Complete installation. (as shown in Figure 4)
- d. Finally, you must pay attention that the two fixing screws must be firmly locked.

Notice: Make sure the fan blades at least 7 feet above the floor

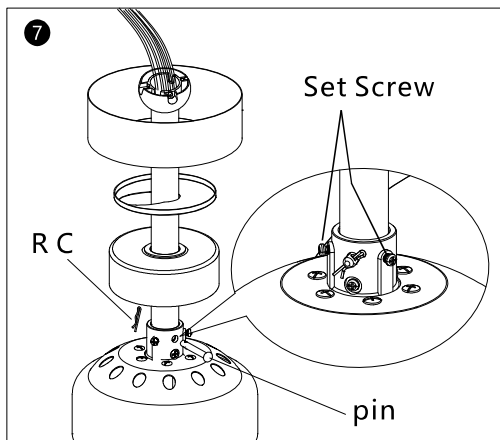
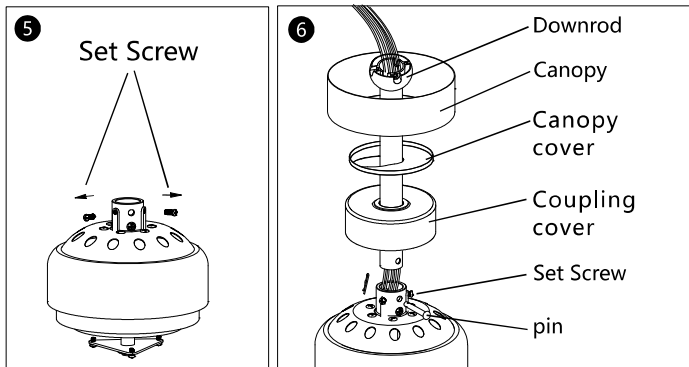


IV : Clamp with pliers, twist the pliers left and right to remove the oval piece.

Tip: For the roofs under 15° , it can be used without removal.

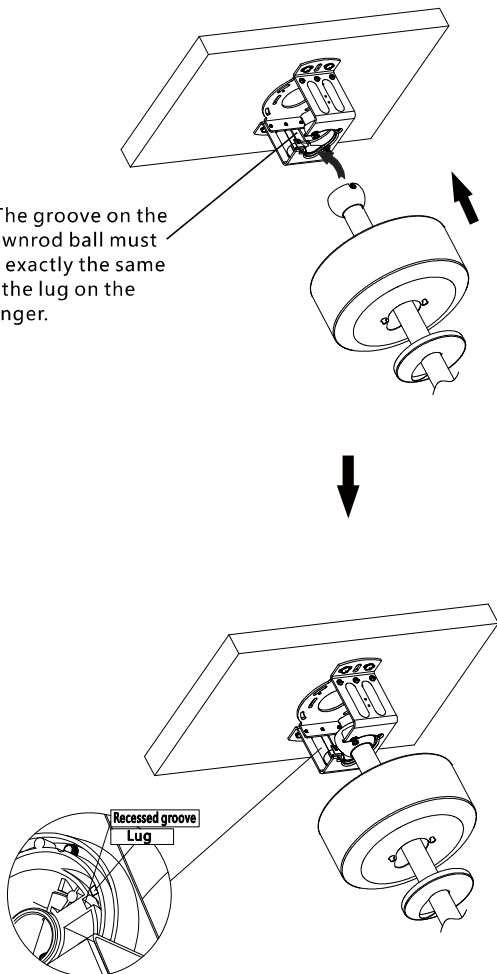


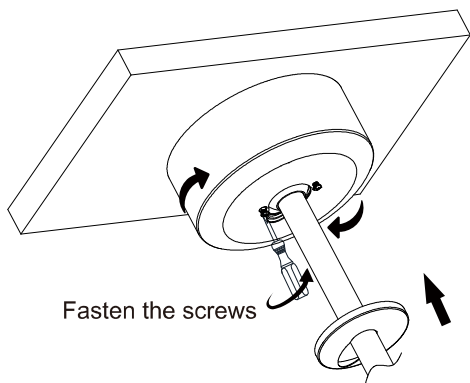
V. Lock the downrod to the coupling.



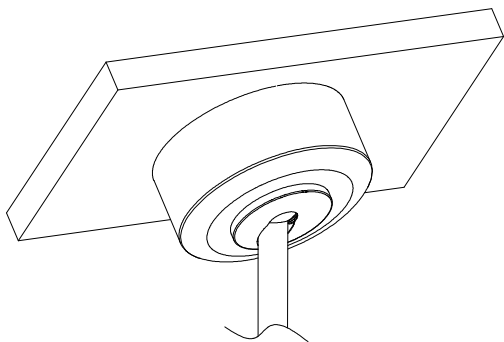
VI : Hanging the downrod on the mounting bracket.

✖ The groove on the downrod ball must be exactly the same as the lug on the hanger.





VII : Pull the downrod to the vertical direction.



Finish