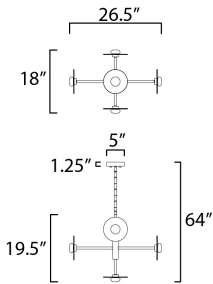




**PRODUCT DESCRIPTION**

Simplistic frames of Black terminate at machined fittings that support round Frost glass discs with a clear reveal on the outside edge. Satin White glass diffusers conceal LED boards which provide ample light with excellent color rendition.



**MEASUREMENTS**

DIMENSION : 18" L x 26.5" W x 19.5" H x 18" Ext  
 MAX OAH : 65.75" OAH  
 CANOPY : 5" W x 2" H x 5" L  
 HANGING WEIGHT : 9.39 lb

**LAMPING**

INPUT VOLTAGE : 120V  
 LUMENS : 1,900 Rated (1,500 Del.)  
 BULB : 5 x 4W LED PCB Integrated , 20W Total  
 BULB INCLUDED : (Integrated)  
 DIMMABLE : Triac CL or ELV  
 CRI : 90 CRI  
 COLOR\_TEMP : 3000K

**FINISHES OPTION**

Black (BK)

**GLASS**

Frosted and Satin White FTSW

**MATERIAL**

Steel, Glass

**RATINGS**

cETLus  
 Dry Location



**ADDITIONAL**

ADJUSTABLE  
 SLOPE: 90  
 RATED LIFE 35000 Hours  
 OPERATING TEMPERATURE:  
 -20°C (-4°F), 40°C (104°F)

Always consult a qualified electrician before installing any lighting product.



WESTERN DISTRIBUTION CENTER (HEADQUARTER)  
 253 NORTH VINELAND AVE | CITY OF INDUSTRY, CA 91746  
 EASTERN DISTRIBUTION CENTER  
 101 GARDNER PARK | PEACHTREE CITY, GA 30269  
 P. 626.956.4200 | F. 626.956.4225 | maximlighting.com