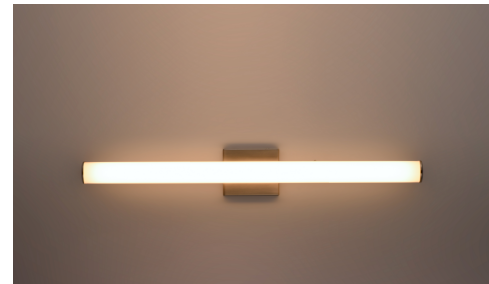
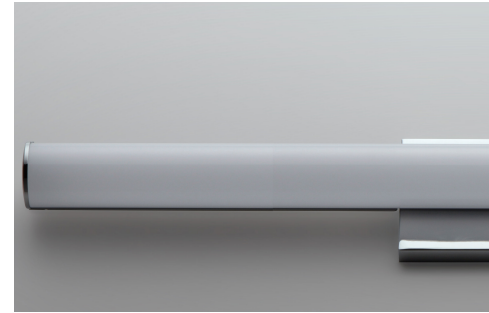
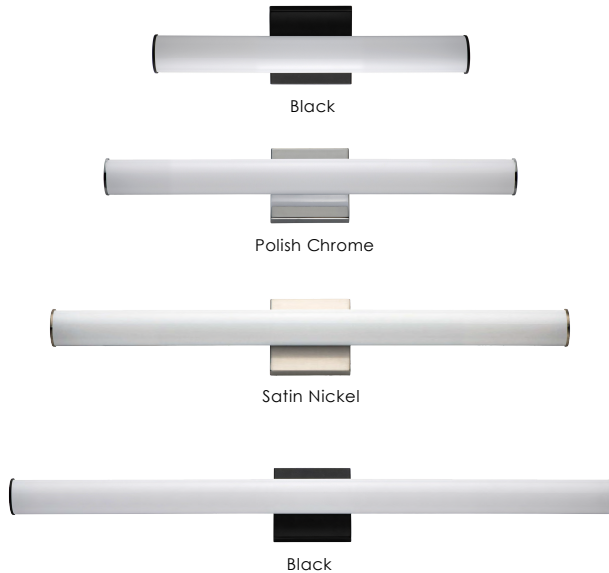


# RAIL I Bath Vanity

52100 / 52102 / 52103 / 52104 / 52105 / 52132

- ETL, cETL IP65
- Suitable for damp locations
- CRI 90+
- Dimmable with Triac Dimmer
- Title 24 JA8 Compliant

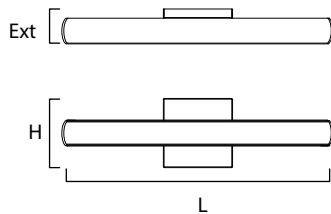
Job Name : \_\_\_\_\_  
 Job Type : \_\_\_\_\_  
 Quantity : \_\_\_\_\_  
 Comments : \_\_\_\_\_



## PRODUCT DESCRIPTION

Tubular shaped White acrylic diffusers mount to frames of Polished Chrome, Satin Nickel, or Black. Powered by 3000K LED these fixtures work well in a variety of contract applications.

- Always consult a qualified electrician before installing any lighting product



## FINISHES OPTIONS:

- Black (BK)
- Polished Chrome (PC)
- Satin Nickel (SN)

## MATERIAL:

Aluminum, Acrylic

## AVAILABLE SIZES:

18" | 24" | 30" | 36" | 48"

## RATINGS:

ETL cETL IP65  
 Damp Location  
 Title 24  
 JA8 Compliant  
 ADA  
 Dimmable



## ADDITIONAL:

RATED LIFE : 50,000 hours INSTALL UP/  
 DOWN: Both  
 OPERATING TEMPERATURE: -20°C (-4°F),  
 40°C (104°F)

MODEL	DIMENSION	BULB TYPE	CRI	LUMENS INIT DEL	COL TEMP.	DIMMABLE	INPUT
52100	18"W x 4.75"H x 2.5"Ext.	12W LED (Integrated)	90	1140 930	3000K	Triac Dimmer	120V
52102	24"W x 4.75"H x 2.5"Ext.	16W LED (Integrated)	90	1520 1400	3000K	Triac Dimmer	120V
52103	30"W x 4.75"H x 2.5"Ext.	20W LED (Integrated)	90	1900 1690	3000K	Triac Dimmer	120V
52104	36"W x 4.75"H x 2.5"Ext.	24W LED (Integrated)	90	2280 2040	3000K	Triac Dimmer	120V
52105	48"W x 4.75"H x 2.5"Ext.	32W LED (Integrated)	90	2480 2240	3000K	Triac Dimmer	120V
52132	24"W x 4.75"H x 2.5"Ext.	16W LED (Integrated)	90	1600 1400	27/35/40K	27-35-40	120V



**WESTERN DISTRIBUTION CENTER (HEADQUARTER)**  
 253 NORTH VINELAND AVE | CITY OF INDUSTRY, CA 91746  
**EASTERN DISTRIBUTION CENTER**  
 101 GARDNER PARK | PEACHTREE CITY, GA 30269  
 P. 626.956.4200 | F. 626.956.4225 | maximlighting.com