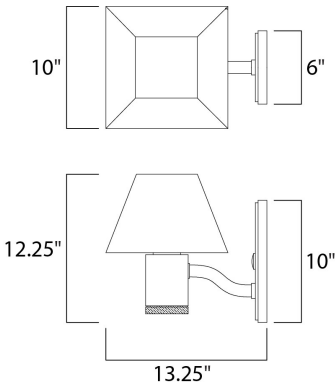




**PRODUCT DESCRIPTION**

This classic design features indirect light from within the shade as well as direct down light through the clear acrylic diffuser. Durable die cast aluminum construction is available in your choice of Architectural Bronze or Black.



**MEASUREMENTS**

DIMENSION : 10" W x 12.25" H x 13.25" Ext  
BACK PLATE : 6" W x 10" H x 7" HCO  
HANGING WEIGHT : 5.56 lb

**LAMPING**

INPUT VOLTAGE : 120V  
LUMENS : 1,190 Rated  
BULB : 2 x 8.5W LED PCB Integrated , 17W Total  
BULB INCLUDED : (Integrated)  
DIMMABLE : No  
CRI : 80+ CRI  
COLOR\_TEMP : 3000K

**FINISHES OPTION**

 Black (BK)

**GLASS**

Clear CL

**MATERIAL**

Die Cast Aluminum

**RATINGS**

cETLus  
Wet Location



**ADDITIONAL**

OPERATING TEMPERATURE:  
-20°C (-4°F), 40°C (104°F)

Always consult a qualified electrician before installing any lighting product.



WESTERN DISTRIBUTION CENTER (HEADQUARTER)  
253 NORTH VINELAND AVE | CITY OF INDUSTRY, CA 91746  
EASTERN DISTRIBUTION CENTER  
101 GARDNER PARK | PEACHTREE CITY, GA 30269  
P. 626.956.4200 | F. 626.956.4225 | maximlighting.com