

MX-L-120-SL

LED UNDER CABINET LIGHTING

The newest, thinnest under cabinet model, the SL, features CRI 90+ color rendering and 3000K color temperature. 120-277V input and dimmable drivers lend them for both residential and commercial applications. Available in Bronze and White. Connect them edge-to-edge or by using connecting cables.

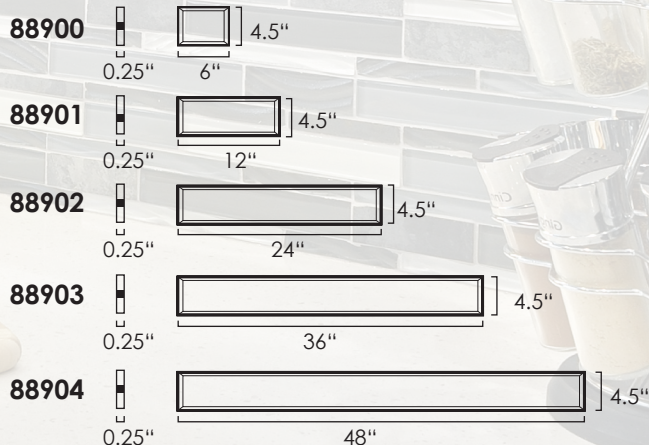
0.25"
THICK

FEATURES:

- 3000K Color Temperature
- CRI 90+
- 120V-277V input drivers linkable up to 96W
- Dimmable at 120V using Electronic Low Voltage
- 3/8" tall profile

INCLUDES:

- 3/8" knockouts on driver
- Mounting screws
- Edge-to-edge connector
- Magnetic mounting plate



ITEM	LAMPING	DIMENSIONS	CRI	LUMENS		VOLT
				Init.	Del.	
88900	3W LED 3000K (Integrated)	6"L x 4.5"W x 0.25"H	90+	210	180	24V
88901	6W LED 3000K (Integrated)	12"L x 4.5"W x 0.25"H	90+	420	360	24V
88902	12W LED 3000K (Integrated)	24"L x 4.5"W x 0.25"H	90+	840	720	24V
88903	18W LED 3000K (Integrated)	36"L x 4.5"W x 0.25"H	90+	1260	1080	24V
88904	24W LED 3000K (Integrated)	48"L x 4.5"W x 0.25"H	90+	1680	1440	24V

Finish: White (WT), Bronze (BZ)

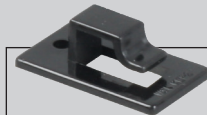


ACCESSORIES



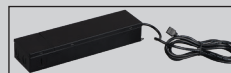
CONNECTOR CORD

12" **8912BK**, WT
24" **8924BK**, WT
72" **8972BK**, WT



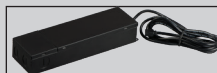
PLASTIC WIRE CLIP

53255
1"L x .5"W x 0.25"H



60W DRIVER

8900BK
8.5"L x 2.5"W x 1.5"H



100W DRIVER

8910BK
9.5"L x 2.5"W x 1.5"H

COUNTERMAX™

MAXIM®
LIGHTING